

Electric hand mixer

orava

SL-150

Instruction manual

EN



CE

SL-150

Intended use of the device

- The appliance is intended exclusively for whipping, kneading to the extent determined by technical and operational parameters and functions, safety and user instructions and external influences operating environment.
- ORAVA electrical equipment is manufactured according to the current state of the art and recognized safety rules. Nevertheless, improper and unprofessional use or use contrary to the intended use may result in injury or endanger life to the user or third party. damage to the device and other material values. Keep the manual carefully for future reference.

1. GENERAL SAFETY INSTRUCTIONS AND WARNINGS

- This document contains important safety instructions and warnings for safe, correct and economical operation of the electrical equipment. Its compliance helps the user avoid risks, increase reliability and product life.
- In this document, the general term product is used in text parts such as: electrical equipment - any device used for the production, conversion, transmission, distribution or use of electricity.
- From the point of view of the purpose of using electricity, the concept of electrical equipment in the strict sense of the word will include the following categories:
 - household electric appliances,
 - information and communication equipment,
 - consumer electronics,
 - lighting equipment,
 - electrical and electronic tools,
 - toys and equipment for sporting and recreational purposes,
 - medical devices (aids),
 - monitoring and control devices,
 - vending machines.

1.1 General safety instructions

- Before operating the unit, we recommend that you carefully read the instruction manual and operate the equipment in accordance with the instructions!
- The safety instructions and warnings in this manual do not cover all the possible conditions and situations that may arise when using the device. The user must understand that a factor that cannot be incorporated into any of the products is personal responsibility and caution. These factors must therefore be ensured by users serving this device.

- Failure to follow the safety instructions and warnings is forbidden by the manufacturer for any damage to health or property!
- Keep the instruction manual as close to the device as possible throughout its service life. Always keep the instruction manual together with the appliance for future use and use by new users.
- Use the appliance only for the intended purpose and in the manner specified by the manufacturer.
- The appliance is intended for home and similar indoor use without special focus.
- This appliance is intended, in addition to domestic use, for the following uses:
 - in shops, offices and other similar work environments;
 - in economic buildings;
 - in hotels, motels and other residential environments;
 - in bed and breakfast establishments.
- It is not a professional device for commercial use.
- Do not change the technical parameters and features of the device by unauthorized modification or modification of any part of the device.
- The manufacturer is not responsible for damages caused during transportation, misuse, damage or destruction of the equipment due to adverse weather conditions.

1.2 Safety of the operating environment

- Do not use the device in an industrial environment or outside environment!
- Do not expose the appliance to:
 - sources of excessive heat or open flame,
 - dripping or splashing water,
 - vibration and excessive mechanical stress,
 - insects, animals and plants,
 - aggressive and chemical substances.
- The operating environment of the device must always be in accordance with the basic characteristics set out.
- Features of the operating environment:
 1. Ambient temperature: $+5 \div +40$ ° C
 2. Humidity: $5 \div 85\%$
 3. Altitude: $\leq 2\,000$ m
 4. Occurrence of water: intermittent condensation of water or occurrence of water vapor
 5. Occurrence of foreign bodies: quantity and type of dust are insignificant
 6. Protection degree: min. IP20 (device protected from touching dangerous parts by hand and non-waterproof)
- This degree of protection is not indicated on the product and on the technical parameters in the operating instructions.

- If the protection class of the product is different from IPX0, this information is then displayed on the label of the appliance or in the technical data of the operating instructions.
- Other characteristics of the domestic operating environment (mechanical stress - vibrations and vibrations, occurrence of plant, animals, weather effects ...) are negligible in terms of effect on the correct and safe use of electrical equipment.

1.3 Electrical safety

- Before connecting the appliance to the power supply for the first time, make sure that the voltage on the appliance label corresponds to that of the household electrical outlet.
- The electric appliance is designed to power from 1/N/PE ~ 230 V 50 Hz.
- The electrical safety of the appliance is guaranteed only if it is properly connected to the mains.

- Electrical protection class I equipment is equipped with a protection against electric shock by means of protective earthing of inanimate parts, which can become dangerous when the device is malfunctioning. Always connect such devices to properly installed mains sockets that are equipped with earthing conductors and have a properly grounded earthing conductor.

All electrical equipment is equipped with a three-wire power supply.

- Class II electrical equipment is protected against electric shock by double insulation or by enhanced insulation of hazardous live electrical parts. Device of protection class II it must not be equipped with means to connect protective earthing.

All electrical equipment is equipped with two-wire power supply.

- Class III electrical equipment is a device that is powered by a small safe voltage source (battery or accumulator) and does not present any danger to the user from electrical shock.
- In order to provide increased safety against the risk of electric shock due to the use of electrical appliances by laypersons, it is recommended to install the power supply circuit for sockets with a rated current not exceeding 20 A RCD with a rated operating current not exceeding 30 mA.

To ensure the safety and correctness of the electrical installation, consult a qualified electrician.

- Only use a power cord with a plug (mains lead) supplied with the device and compatible with a wall socket. Using another cable may result in fire or electric shock.
- Always connect an electrical appliance to an easily accessible mains socket. In the event of an operating fault, the appliance must be switched off as soon as possible and disconnected from mains supply.
- The power cord and mains plug must always be easily accessible for safe disconnection of the electrical appliance from the power supply.

- Do not pull off the power cord by pulling the cable. Disconnect the power cord by pulling the plug behind the power cord plug.
- If you use an extension cord, make sure that the total rated power of all devices connected to the extension cord does not exceed the max. current load on the extension cable.
- If you need to use an extension cord or power supply block, make sure that the extension cord or power pack is plugged into a power socket, and not to another extension cord or power supply. The extension power cord or power supply block must be designed for grounded electrical plugs and connected to a properly grounded electrical socket.
- The power plug of the appliance must be compatible with the mains socket. Never use any adapters or modify the socket in any other way. Do not use inappropriate or damaged drawers!
- To avoid electrical shock, plug the power cables into properly grounded electrical sockets. If the device is equipped with a 3-pole plug, do not use adapters that do not have a grounding element or remove the grounding element from the plug or adapter.
- Do not bend, crush or otherwise expose the power cord of the appliance to mechanical stress or external heat sources. Damage to the power cord may result in electric shock.
- When the power cord is damaged, disconnect the appliance from the mains and do not use it again.
- If the power cord is damaged, it must be replaced by the manufacturer, its service department or a similarly qualified person to avoid the risk of electric shock.
- Regularly check and maintain the electrical appliance as well as the power cord and power socket. Disconnect the power plug regularly and clean it if necessary. Pollution by dust or other substances may cause disruption of the insulating state and consequently fire.
- Do not expose the appliance to water or moisture. The ingress of water into the appliance increases the risk of electric shock.
If the power cord is wet or the water has penetrated the water, disconnect it immediately from the mains. If the appliance is plugged into a mains socket and if possible, turn off the power circuit before attempting
unplug the power. If you are pulling wet wires from a live power source, be very careful.
- If the electrical equipment is installed (connecting) the protective covers are dismantled, the electrical parts must not be accessible to the user when the installation is finished.

1.4 Safety of persons

- This appliance is intended for use and operation by persons without electrotechnical qualification - lay people, according to the instructions specified by the manufacturer.
- Device operation includes activities such as switching on and off, user manipulation and setting of operating parameters, visual or auditory inspection of the equipment, and user cleaning and maintenance.
- This appliance can be used by children under the age of 8 and persons with reduced physical, sensory or mental capabilities or lack of experience or knowledge when supervised or instructed to use the appliance safely and understand the dangers involved.
- Children may not play with the appliance.
- Cleaning and maintenance for users may not be performed by children unattended.
- Always keep the appliance out of reach of children during use and operation. Be sure to download the appliance even for a freely accessible power cord.
- Always be careful when operating the electric appliance! Do not use an electric appliance if you are overly tired, under the influence of medication or narcotic drugs that reduce attention and focus.
- Inattention during operation may result in serious injury.

1.5 Cleaning, maintenance and repairs

- Observe the normal user cleaning and maintenance of the appliance in the recommended way. Do not use solvents or harsh cleaners for cleaning. Pollution and visible stains from finger contact, respectively. The hands can be cleaned using detergent detergents specially designed to clean household appliances.
- If you do not use the appliance, clean it or disconnect the appliance from the power supply when the appliance is faulty.
- Electrical appliances that are cleaned after use and are not intended to be completely or partly immersed in water or other liquid, protect against the effects of dripping and / or splashing water and before immersion.
- Electric household appliances, like all other technical devices, are subject to the surrounding environment and natural wear. Since the legal framework of regular maintenance is not laid down for lay-in electrical household appliances, the manufacturer recommends that the user have the appliance checked and cleaned at least once a year by a specialist workshop.
- By doing so, it is possible to achieve safety, operational reliability and increased service life.
- Do not disassemble the electric appliance! The appliance works with a dangerous voltage. For this reason, always switch off the appliance and disconnect it from the mains supply during user maintenance. In the event of a fault, please have the repair serviced by an authorized service center.
- Before calling a service:
 1. Turn the appliance off and on to make sure the fault reappears.
 2. If the malfunction of the appliance still persists after these operations, call the nearest specialist service center.
- Never repair the electric appliance yourself!
- Unauthorized, unqualified and improper use of an electric appliance may result in electric shock or other serious injury.
- Only carry out the warranty or post-warranty repair of an electrical appliance to an authorized qualified person (*).

(*) Competent qualified expert: the sales department of the manufacturer or importer or the person qualified and authorized to carry out this type of activity with the ability to avoid all risks.

2. Special safety instructions. Read carefully!

- The electrical equipment is designed and manufactured in such a way as to enable safe operation and use by persons without professional qualifications. Despite all the precautions taken by the manufacturer for safe operation and use, they carry certain residual risks and associated hazards.
- The following symbols and their meanings have been used on the device and in the accompanying documentation to warn of potential hazards:



This symbol warns users that the device is working with hazardous electrical voltage. Do not remove protective covers on the device.

Failure to follow the safety instructions for use and operation of the device may result in:

Risk of electric shock! Risk of serious injury or death!



This symbol warns users that there is a risk of: - serious injury or danger to life if the safety instructions are not followed when using or operating the equipment!

Danger of damage to equipment or other property damage!



This symbol indicates that the product is made with double insulation between hazardous live parts (power supply dangerous parts) and parts that are accessible under normal use.

Transportation/Transfer

- Only transport/transfer the equipment after thorough inspection of the area and route, which must be free of obstacles.
- Never carry the machine while it is in operation. Do not carry the device while it is connected to a power outlet.
- Make sure your hands and equipment are not wet or slippery when carrying them.

There is a risk of serious injury or danger to life!

There is a risk of damage to the equipment!

Unpacking/Packaging

- Unpack and dispose of all parts and accessories of packaging materials and labels before commissioning. Put all packing materials in a safe place or keep it out of reach of children and incapacitated persons.
There is a risk of serious injury!
There is a danger of suffocation!

Inspection/Commissioning

- Never use the equipment if any part of it is damaged during use. Do have the unit serviced by a workshop.
- Before using the appliance for the first time, wash the accessories with water and detergent. Rinse and dry carefully.
- Before connecting the equipment to the mains socket, make sure that the nominal voltage on the rating plate matches the voltage in your socket.
- Connect the equipment only to a properly grounded outlet. There is a risk of serious injury!

Caution!

- The appliance is for domestic use. It's not a professional device.
- Do not use the device in an industrial environment or outdoors.
- Do not leave the unit unattended if it is connected to an electrical outlet.
- If you have wet or damp hands, do not touch the device that is connected to an electrical outlet.
There is a risk of electric shock!
There is a risk of serious injury!
- Always unplug the machine from the wall outlet before shutting down for a short period of time or after use.
- The device must not be used if it has dropped to the ground and shows visible signs of damage.
- Make sure that the power cord does not come into contact with water.
- Do not unplug the machine from the wall outlet by pulling on the power cord. Doing so may damage the power cord or power outlet. Disconnect the cable by pulling the plug of the power cord.
- If the power cord is damaged, have it replaced by a service center.
Equipment with damaged network it is forbidden to use the power cord or plug.
- To avoid the risk of electric shock, do not repair or modify the device yourself. Have all repairs carried out by an authorized service center.
By interfering with the product, you expose you to the risk of losing the legal right of improper performance, or quality assurance.
There is a risk of damage to the equipment or other material damage!
There is a risk of electric shock! There is a risk of electric short circuit!

Location/Installation

- Children under 3 years of age must be prevented from access unless they are under constant supervision.
- Children under 3 years of age and under the age of 8 must not plug, regulate or clean the device or perform user maintenance.

Warning!

- Place the machine in a location where children cannot freely reach. Do not allow children to handle the equipment (play with it) The device may tip over and cause very serious injury. Breaking parts and covers of the device can cause serious injury.

There is a risk of serious injury or danger to life!

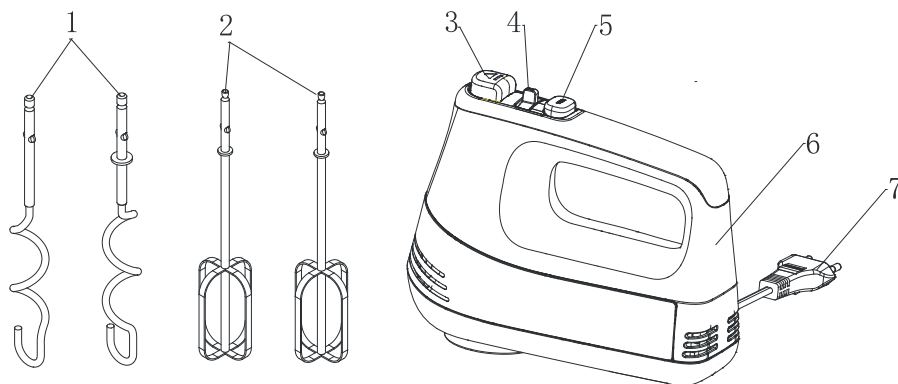
There is a risk of damage to the equipment or other material damage!

- The device is not designed to be used by persons with disabilities reduced physical, sensory or mental abilities. Persons with insufficient experience or knowledge can use it only if other person is responsible for them, they know the safety and use the equipment under supervision.
- The machine must be used and stored on a stable surface.
- Always make sure that the space where you want to place the equipment has sufficient space, stability and mechanical strength.
- Do not place the appliance on an electric or gas cooker or other heat sources or near them.
- Always connect the appliance to a power outlet at normal use and then turn on the main switch - the controller.
- After use, turn off the main power switch - regulator and then pull the power cord plug out of the power outlet.
- When you are not using the machine, clean it, attach it to it or if a fault occurs, disconnect the device from the power supply.
- Do not touch the parts of the machine in motion. Never handle the whiskers when connected to the mains.
- The power outlet and power cord must remain easily accessible for safe disconnection from the mains.
- This equipment is not intended to be operated by a programmer, an external timer or remote control, as there is a risk of fire if the equipment is covered or improperly located.
- Never leave the appliance unattended and freely accessible with the power cord loose. Children, incapacitated persons or animals could be removed from the power cord.
- Do not store the device with the cord wrapped around its body. Fold the power cord in the way it was folded in its original packaging from the manufacturer.

There is a risk of serious injury!

Maintenance

Description of parts and controls:



- 1 dough hooks
- 2 whisks
- 3 whisk release button
- 4 speed controller
- 5 TURBO button
- 6 body of the mixer
- 7 power cord

Preparation

Compilation

Before assembling the device, disconnect the device from the mains and set the speed control to the „0“ position.

1. Unpack the device and make sure you have all the accessories.
2. Depending on the type of whipping please select the necessary accessories.
3. Attach the accessories to the device.
Insert the whisks according to the hole into which their shaft fits.
4. To disassemble the beater and base assembly, proceed in reverse order.

Notes

- Place the whisks, dough hooks and bowl correctly and completely. Otherwise, the device will not work properly.
- Only one type of whisks can be used at a time!

The use

1. Set the speed control to „0“ and connect the device to the mains.
2. Use the speed control to set the desired speed (1 - 5) and whisk.
3. The Turbo button (5) is used to briefly increase the speed to the maximum speed. Do not use the Turbo function for more than 1 minute.

Notes

- Always start whipping at lower speeds and gradually increase the speed. This will eliminate the ejection of whipped food from the container.
- When mixing dry ingredients, whisk at low speed to prevent dusting.

WARNING!

- Do not use the Turbo function for more than 1 minute.
- After 3 minutes of continuous operation, the device must be switched off for approx. 15 minutes.

Speed	Description
1	Starting speed for mixing flour, butter and potatoes.
2	Starting speed for mixing liquid ingredients for salad mayonnaise.
3	Mixing dough for cakes and desserts.
4	Mixing of margarines, unbaked cakes, etc.
5	Mixing eggs, ice cream, whipped cream, etc.
TURBO	Instantaneous maximum speed as in the „Turbo“ position.

Preparation times and speed settings for accessories

Select the accessories for the required product according to the following table:

Product/way of preparation	Attachment	Stage	Maximum operating time
heavy dough (eg sour dough)	dough beaters	1 - 4	3 min.
pastry	whisking beaters	2 - 5	5 min.
sponge, waffle dough, whipped cream	whisking beaters	2 - 5	5 min.

The processing time of the ingredients depends on how thoroughly you want to mix the food.

After operation

1. When mixing is complete, turn off the unit by sliding switch **4** to position 0. Unplug the power cord from the electrical socket.
2. Grasp the whisks, push down release button **3**, and remove the whisks.
3. Remove food residue from the whisks with a wooden or rubber spatula.

Cleaning

- Before each cleaning, first unplug the appliance and let it cool down.
- Use only a slightly damp cloth to clean the device itself.
- Do not use any solvents or harsh cleaners.
- Wash the dough beaters and whisks in warm water with detergent, wipe them off and dry them carefully. Do not leave parts wet.
- Do not use solvents or harsh cleaners to clean any elements.
- Wash the whisks and dough beaters immediately after use to prevent food residues from drying on them.
- Do not wash parts of the appliance in the dishwasher.

Warning!

Never immerse the device in water or any other liquid!

Wipe the base with the motor and the power cord with a dry cloth.

The engine is lubricated with durable Vaseline. Does not require lubrication.

Technical specifications

Power:	220 - 240 V~ 50/60 Hz
Power consumption:	500 W
Trieda ochrany:	II
Dimensions (W x H x D):	19 x 16 x 8,7 cm
Weight:	0,85 kg (without accessories)
Continuous time operations (KB):	max. 3 min. (speed 1 - 5) max. 1 min. (TURBO speed)
RPM:	260 - 1 100 \pm 15 % rpm
Noise level:	80 dB (A)

The declared noise emission value of this appliance is 80 dB (A), which is the A-sound power level with respect to the 1 pW reference sound power.

We reserve the right to make changes!

Producer:

ORAVA retail 1, a.s.
Seberínho 2
821 03 Bratislava
Slovenská republika

Importer:

ORAVA retail 1, a.s.
Seberínho 2
821 03 Bratislava
Slovenská republika

ORAVA distribution CZ, s.r.o.
Ostravská 494
739 25 Sviadnov
Česká republika

**DISPOSAL OF USED ELECTRICAL AND ELECTRONIC EQUIPMENT**

The symbol on the product or on its packaging indicates that this product does not belong to household waste. It is necessary to take it to a collection point for electrical recycling and electronic equipment.

By ensuring proper disposal of this product, you will help prevent negative consequences to the environment and human health that would otherwise be caused by inappropriate disposal of this product. For more detailed information about recycling of this product, please contact your local authority, your household waste disposal service or the shop where you purchased the product.



This product meets all the essential requirements of the EU directives that apply to it.