

Electric window cleaner



Lautus-1

Instruction manual

EN



Lautus-1

Intended use of the device

The device is designed exclusively for extracting excess moisture on smooth, damp surfaces such as windows, mirrors and ceramic tiles, equipped with a function of vacuuming dry dirt, to the extent determined by technical and operational parameters and functions, safety and user instructions and environmental effects.

ORAVA electrical appliances are manufactured according to state-of-the-art knowledge and recognized safety-related rules. Nevertheless, improper or improper use or improper use may result in injury or endangerment to the life of the user or a third party, or to a third party. damage to equipment and other property.

1. GENERAL SAFETY INSTRUCTIONS AND WARNINGS

- This document contains important safety instructions and warnings for safe, correct and economical operation of the electrical equipment. Its compliance helps the user avoid risks, increase reliability and product life.
- In this document, the general term product is used in text parts such as: electrical equipment - any device used for the production, conversion, transmission, distribution or use of electricity.
- From the point of view of the purpose of using electricity, the concept of electrical equipment in the strict sense of the word will include the following categories:
 - household electric appliances,
 - information and communication equipment,
 - consumer electronics,
 - lighting equipment,
 - electrical and electronic tools,
 - toys and equipment for sporting and recreational purposes,
 - medical devices (aids),
 - monitoring and control devices,
 - vending machines.

1.1 General safety instructions

- Before operating the unit, we recommend that you carefully read the instruction manual and operate the equipment in accordance with the instructions!
- The safety instructions and warnings in this manual do not cover all the possible conditions and situations that may arise when using the device. The user must understand that a factor that cannot be incorporated into any of the products is personal responsibility and caution. These factors must therefore be ensured by users serving this device.
- Failure to follow the safety instructions and warnings is forbidden by the manufacturer for any damage to health or property!
- Keep the instruction manual as close to the device as possible throughout its service life. Always keep the instruction manual together with the appliance for future use and use by new users.
- Use the appliance only for the intended purpose and in the manner specified by the manufacturer.

- The appliance is intended for home and similar indoor use without special focus.
- This appliance is intended, in addition to domestic use, for the following uses:
 - in shops, offices and other similar work environments;
 - in economic buildings;
 - in hotels, motels and other residential environments;
 - in bed and breakfast establishments.
- It is not a professional device for commercial use.
- Do not change the technical parameters and features of the device by unauthorized modification or modification of any part of the device.
- The manufacturer is not responsible for damages caused during transportation, misuse, damage or destruction of the equipment due to adverse weather conditions.

1.2 Safety of the operating environment

- Do not use the device in an industrial environment or outside environment!
- Do not expose the appliance to:
 - sources of excessive heat or open flame,
 - dripping or splashing water,
 - vibration and excessive mechanical stress,
 - insects, animals and plants,
 - aggressive and chemical substances.
- The operating environment of the device must always be in accordance with the basic characteristics set out.
- Features of the operating environment:
 1. Ambient temperature: $+5 \div +40^{\circ} \text{C}$
 2. Humidity: $5 \div 85\%$
 3. Altitude: $\leq 2\,000 \text{ m}$
 4. Occurrence of water: intermittent condensation of water or occurrence of water vapor
 5. Occurrence of foreign bodies: quantity and type of dust are insignificant
 6. Protection degree: min. IP20 (device protected from touching dangerous parts by hand and non-waterproof)
- This degree of protection is not indicated on the product and on the technical parameters in the operating instructions.
- If the protection class of the product is different from IPX0, this information is then displayed on the label of the appliance or in the technical data of the operating instructions.
- Other characteristics of the domestic operating environment (mechanical stress - vibrations and vibrations, occurrence of plant, animals, weather effects ...) are negligible in terms of effect on the correct and safe use of electrical equipment.

1.3 Electrical safety

- Before connecting the appliance to the power supply for the first time, make sure that the voltage on the appliance label corresponds to that of the household electrical outlet.
- The electric appliance is designed to power from 1/N/PE ~ 230 V 50 Hz.
- The electrical safety of the appliance is guaranteed only if it is properly connected to the mains.
- Electrical protection class I equipment is equipped with a protection against electric shock by means of protective earthing of inanimate parts, which can become dangerous when the device is malfunctioning. Always connect such devices to properly installed mains sockets that are equipped with earthing conductors and have a properly grounded earthing conductor.
All electrical equipment is equipped with a three-wire power supply.
- Class II electrical equipment is protected against electric shock by double insulation or by enhanced insulation of hazardous live electrical parts. Device of protection class II it must not be equipped with means to connect protective earthing.
All electrical equipment is equipped with two-wire power supply.
- Class III electrical equipment is a device that is powered by a small safe voltage source (battery or accumulator) and does not present any danger to the user from electrical shock.
- In order to provide increased safety against the risk of electric shock due to the use of electrical appliances by laypersons, it is recommended to install the power supply circuit for sockets with a rated current not exceeding 20 A RCD with a rated operating current not exceeding 30 mA.
To ensure the safety and correctness of the electrical installation, consult a qualified electrician.
- Only use a power cord with a plug (mains lead) supplied with the device and compatible with a wall socket. Using another cable may result in fire or electric shock.
- Always connect an electrical appliance to an easily accessible mains socket. In the event of an operating fault, the appliance must be switched off as soon as possible and disconnected from mains supply.
- The power cord and mains plug must always be easily accessible for safe disconnection of the electrical appliance from the power supply.
- Do not pull off the power cord by pulling the cable. Disconnect the power cord by pulling the plug behind the power cord plug.
- If you use an extension cord, make sure that the total rated power of all devices connected to the extension cord does not exceed the max. current load on the extension cable.
- If you need to use an extension cord or power supply block, make sure that the extension cord or power pack is plugged into a power socket, and not to another extension cord or power supply. The extension power cord or power supply block must be designed for grounded electrical plugs and connected to a properly grounded electrical socket.
- The power plug of the appliance must be compatible with the mains socket. Never use any adapters or modify the socket in any other way. Do not use inappropriate or damaged drawers!
- To avoid electrical shock, plug the power cables into properly grounded electrical sockets. If the device is equipped with a 3-pole plug, do not use adapters that do not have a grounding element or remove the grounding element from the plug or adapter.

- Do not bend, crush or otherwise expose the power cord of the appliance to mechanical stress or external heat sources. Damage to the power cord may result in electric shock.
- When the power cord is damaged, disconnect the appliance from the mains and do not use it again.
- If the power cord is damaged, it must be replaced by the manufacturer, its service department or a similarly qualified person to avoid the risk of electric shock.
- Regularly check and maintain the electrical appliance as well as the power cord and power socket. Disconnect the power plug regularly and clean it if necessary. Pollution by dust or other substances may cause disruption of the insulating state and consequently fire.
- Do not expose the appliance to water or moisture. The ingress of water into the appliance increases the risk of electric shock.
If the power cord is wet or the water has penetrated the water, disconnect it immediately from the mains. If the appliance is plugged into a mains socket and if possible, turn off the power circuit before attempting unplug the power. If you are pulling wet wires from a live power source, be very careful.
- If the electrical equipment is installed (connecting) the protective covers are dismantled, the electrical parts must not be accessible to the user when the installation is finished.

1.4 Safety of persons

- This appliance is intended for use and operation by persons without electrotechnical qualification - lay people, according to the instructions specified by the manufacturer.
- Device operation includes activities such as switching on and off, user manipulation and setting of operating parameters, visual or auditory inspection of the equipment, and user cleaning and maintenance.
- This appliance can be used by children under the age of 8 and persons with reduced physical, sensory or mental capabilities or lack of experience or knowledge when supervised or instructed to use the appliance safely and understand the dangers involved.
- Children may not play with the appliance.
- Cleaning and maintenance for users may not be performed by children unattended.
- Always keep the appliance out of reach of children during use and operation. Be sure to download the appliance even for a freely accessible power cord.
- Always be careful when operating the electric appliance! Do not use an electric appliance if you are overly tired, under the influence of medication or narcotic drugs that reduce attention and focus.
- Inattention during operation may result in serious injury.

1.5 Cleaning, maintenance and repairs

- Observe the normal user cleaning and maintenance of the appliance in the recommended way. Do not use solvents or harsh cleaners for cleaning. Pollution and visible stains from finger contact, respectively. The hands can be cleaned using detergent detergents specially designed to clean household appliances.
- If you do not use the appliance, clean it or disconnect the appliance from the power supply when the appliance is faulty.
- Electrical appliances that are cleaned after use and are not intended to be completely or partly immersed in water or other liquid, protect against the effects of dripping and / or splashing water and before immersion.
- Electric household appliances, like all other technical devices, are subject to the surrounding environment and natural wear. Since the legal framework of regular maintenance is not laid down for lay-in electrical household appliances, the manufacturer recommends that the user have the appliance checked and cleaned at least once a year by a specialist workshop.
- By doing so, it is possible to achieve safety, operational reliability and increased service life.
- Do not disassemble the electric appliance! The appliance works with a dangerous voltage. For this reason, always switch off the appliance and disconnect it from the mains supply during user maintenance. In the event of a fault, please have the repair serviced by an authorized service center.
- Before calling a service:
 1. Turn the appliance off and on to make sure the fault reappears.
 2. If the malfunction of the appliance still persists after these operations, call the nearest specialist service center.
- Never repair the electric appliance yourself!
- Unauthorized, unqualified and improper use of an electric appliance may result in electric shock or other serious injury.
- Only carry out the warranty or post-warranty repair of an electrical appliance to an authorized qualified person (*).

(*) Competent qualified expert: the sales department of the manufacturer or importer or the person qualified and authorized to carry out this type of activity with the ability to avoid all risks.

2. Špeciálne bezpečnostné upozornenia

- Electrical equipment is designed and manufactured in such a way as to allow safe operation and use by unauthorized personnel. Despite all the measures that have been made by the manufacturer for safe use, operation and use, and carry certain residual risks and associated potential hazards.
- The following symbols and their meanings have been used on the device and in the accompanying documentation to indicate potential hazards:



This symbol alerts users that the device (AC/DC adapter) is operating at hazardous electrical voltages. Do not remove protective covers on the device.

Failure to follow the safety instructions while using and operating the equipment may result in:

Risk of electric shock! Risk of serious injury or death!



This symbol alerts users that if the safety instructions for using and operating the equipment are not followed, there is a risk of:

Risk of serious injury or death!

Risk of equipment damage or other property damage!



This symbol indicates that the product is equipped with circuits in which the maximum electrical voltage does not exceed the permitted values of the low safe voltage.

Such a device cannot cause electric shock when it comes into contact with live parts in normal operation or with non-live parts in the event of equipment failure.

IPX4 This means that the product is designed with a protective cover to protect the device and its functional parts (eg electrical) from splashing water from all directions.

Transportation/Transfer

- During transport and use, take care when moving the truck to prevent the machine from toppling over.
- Only transport/carry the equipment after thoroughly inspecting the area and routes, which must be clear of obstructions.
- Only carry the device after disconnecting the power supply of the built-in battery charger.
- Do not carry the device by the power cord/charger cord.
- When carrying, ensure that your hands and equipment are not damp or slippery.
Risk of serious injury or death!
Risk of equipment damage!

Unpacking/Packaging

- Unpack the device (and accessories, if equipped) before putting it into operation and dispose of all parts of the packaging material, labels and labels. Keep packaging materials in a safe place, especially out of the reach of children and incapacitated persons, or dispose of them safely.
Risk of serious injury!
There is a risk of suffocation!

Inspection/Commissioning

- We recommend performing initial and subsequent regular inspections of the equipment. Use the device only with accessories and spare parts supplied and approved by the manufacturer.
- Never use the appliance if it is incomplete, damaged or parts or accessories have been damaged during use (eg due to a fall).
Risk of electric shock!
Risk of serious injury!
- Inspect and assemble the unit before commissioning as described in the "Commissioning" section.
- Never clean the device (body with electrical parts) and the power cord with plug in a way that could cause liquid to flow into the device.
- Clean these parts only with a damp cloth and wipe them dry or allow them to dry.
- Only clean the unit when it is turned off and unplugged.

Warning!

- Before commissioning the unit, ensure that the built-in battery is charged correctly and completely as described.
- Turn the machine on before using it for the first time. When the battery is flat, the charge / operation indicator will flash slowly. Leave the device on until the battery is completely discharged and the device turns off.
Charge the built-in battery as instructed.

Operation/Supervision

- The device is powered by a rechargeable built-in rechargeable battery.
- The device is supplied with a battery that is not fully charged. Therefore, fully charge the battery as described below before using it for the first time.
- Do not store the device with a discharged battery.
- After using the device (after work), fully charge the battery and store it in a safe place.
- Do not use:
 - for cleaning rough surfaces,
 - for vacuuming larger volumes of fluids.
- Use only conventional window cleaners and smooth tiles for cleaning. Use the manufacturer's recommended cleaning agents.
- Do not place the device:
 - on the edges of tables or furniture parts.
- Do not expose the device to:
 - direct sunlight, sources producing excessive heat,
 - vibration and mechanical stresses,
 - polluting chemicals,
 - water and excessive moisture,
 - insect,
 - aggressive environmental impacts.
Risk of serious injury!
There is a risk of damage to the equipment or other property damage!

- Assemble and disassemble (assemble) parts and accessories, clean and carry the unit only when the unit is disconnected from the mains.
- Do not use or place the device in a place where children can reach freely.
- Keep children away from the device. The device may topple over and cause serious injury to children.
- Mechanical damage (rupture or breakage of parts and covers) of the machine can cause serious injury. Do not use a damaged device.

Risk of serious injury!

There is a risk of damage to the equipment or other property damage!

- Do not use or place the device near containers containing water. Should the device fall into the water, take it to a specialist garage to check that it is safe and working properly.
- Risk of electric shock! Risk of electric short circuit!
- Do not insert or allow foreign bodies to enter the openings of the machine's casing.
- Do not block the air vents of the covers. Air ventilation ensures correct operation, reliable and safe operation of the device.
- Always keep the unit under supervision during use and operation!
- This unit is not intended to be operated by a programmer, external timer or remote control, as there is a risk of fire if it is covered or incorrectly positioned.
- The power outlet and power cord must remain easily accessible to safely unplug the equipment.

Warning!

- The appliance and the power cord must not be left unattended when connected to the mains!
- Never leave the device unattended and freely accessible and do not leave it with an unplugged power cord.
- Risk of electric shock!
- Never overload the device beyond the limits specified in the technical data!
- Observe the operating mode of the device (operation/operation time and pause) according to the operating and use instructions. Clean the appliance regularly - empty from dirt. Overfilling the device can result in reduced operating parameters and possible consequential damage.
- If you notice any abnormal effects (sounds, odors, smoke, etc.) while using the unit, turn off the unit immediately and unplug it from the wall outlet. Have the device checked by a specialist garage.
- If any safety part (mechanical, electrical) is part of the device, never put it out of operation! Do not use the appliance if the safety part / component is damaged or malfunctioning!
- Never underestimate possible dangers and be careful !!!

Power supplies/Accumulator/AC adapter

Warning!

- When using electrical/electronic equipment that is equipped with a DC power supply - battery or accumulator, always observe the important safety instructions and cautions when operating and handling these sources.

Warning!

- Never disassemble the battery!
- Never heat the battery or throw it into a fire!
- Failure to follow the safety instructions could result in:
 - Risk of serious injury!
 - Risk of explosion!
 - Chemical hazard!
 - Risk of damage to the equipment or other property damage!

Warning!

- The device is equipped with a power source that cannot be replaced by the user - a built-in rechargeable battery.
- Danger of electric shock, explosion, electrolyte leakage, burns may result from improper replacement and handling.
- To replace the battery, contact an authorized service center.
- Dispose of the battery according to the applicable regulations and regulations for the disposal of electronic devices

Power Supply Safety Instructions - Charging AC/DC Adapter


- Charging the built-in battery is only allowed using the original charger (AC/DC charger adapter) supplied by the manufacturer or a manufacturer-approved charger.
- In case of visible damage to the charger cable or the charger itself, replace it immediately with an undamaged original or new charger.
- Only use and store the built-in battery charger in a dry place at an ambient temperature of $+5 \div +40^{\circ} \text{C}$.
- Do not grasp or connect the charger cable plug and the cord to the wall outlet if your hands are wet or the plug and charger cable or the device itself are wet. Always wipe the hands, power cord, and device thoroughly with a dry cloth.
Risk of electric shock!
- Never insert any conductive objects (such as a screwdriver, etc.) into the connector (jack connector on the unit) to connect the charger.
Risk of electric short circuit!
Risk of explosion!
- Before connecting the battery charger of the machine to the mains, make sure that the power switch of the machine is set to "0" "OFF".
- Do not use the machine if the power switch does not work.

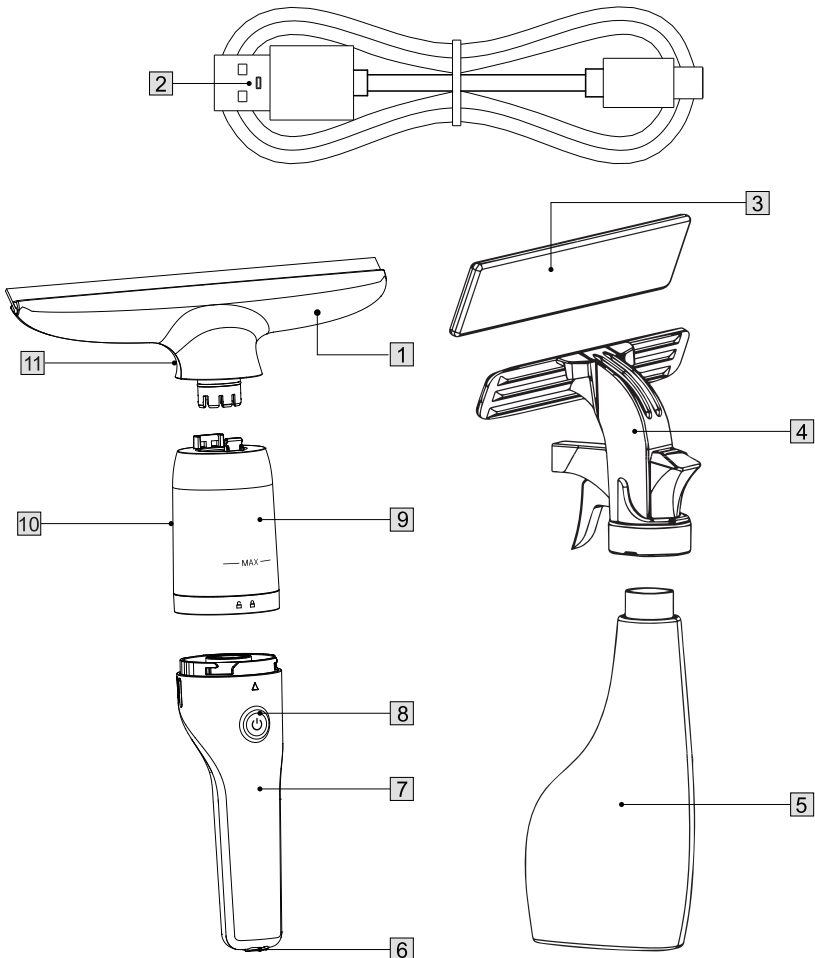
Warning!

- Never open or disassemble the battery! Damage may result in electrical short-circuiting and release of unsatisfactory substances. In case of contact, seek medical advice.
- The battery must not come into contact with fire or be exposed to direct sunlight or excessive heat.
Risk of accumulators!
Risk of fire!
- If the battery is damaged, have it replaced by a specialist garage.
- Dispose of batteries according to the applicable regulations and regulations for the disposal of electronic devices.

Operation

Device description:

- 1 suction nozzle with rubber squeegee
- 2 charging USB-C cable
- 3 wiping mop
- 4 atomizer
- 5 atomizer container
- 6 power connector
- 7 engine unit
- 8 switch  (on/off)
- 9 transparent water tank
- 10 dirty water spout
- 11 suction nozzle release lock

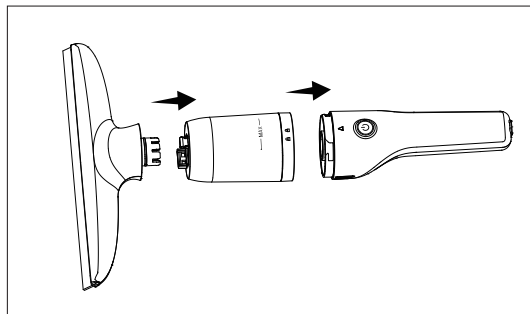
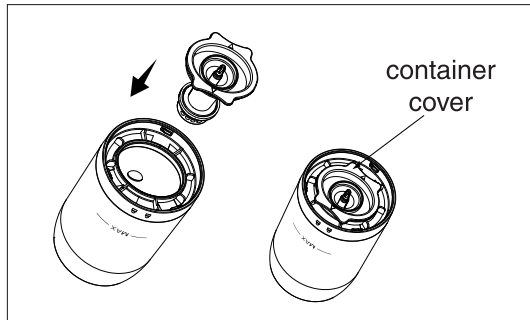


Commissioning

The device does not come with a fully charged battery. For this reason, fully charge the battery before first use.

Assembling and charging

- 1 Assemble the functional parts (suction nozzle and tank with motor unit) into each other so that they click. Using Velcro, attach the mop to the sprayer.
- 2 Make sure the device is turned off before charging.
- 3 Plug the 5V/1A charger (not supplied) with the USB-C charging cable into an outlet, and connect the USB-C connector to the power connector.
- 4 The light of the power switch flashes during charging. Charging is complete when the indicator stops flashing and remains lit continuously.
The device is ready for use. The first charge takes about 3 hours.
- 5 Always charge the battery after work and store the device with a fully charged battery.
- 6 After cleaning, immediately empty the dirty water from the tank and store the washed tank.



Washing windows and smooth surfaces

Absorbent surface cleaning

- 1 Wash the window as usual with water and detergent.
- 2 Switch on the cleaner with the switch. The indicator will be on.
- 3 Before use, make sure that the suction nozzle is free of dirt. To vacuum the cleaning liquid, pull the device from top to bottom at an optimal angle to ensure maximum suction.
Hard-to-reach surfaces can be vacuumed transversely and overhead.
- 4 When the maximum water level in the tank (60 ml) is reached, immediately pour the water out through the spout. Release the pouring hole by pulling out the rubber stopper.

WARNING!

The device contains electrical components.

For this reason, do not wash the base (body) of the device under running water or in water.

Notes

- Do not use the cleaner on uneven surfaces, you would damage the rubber squeegee.
- Clean the device with a damp cloth.
- Never submerge the device in water.
- If the device does not work properly, contact your dealer.

End of operation

- 1 Turn off the device with the power switch.
- 2 Release the suction nozzle by unlocking the suction nozzle lock and remove it from the body of the device with the tank.
- 3 Clean the suction nozzle under running water (do not wash in the dishwasher).
- 4 Release the pouring hole by pulling out the rubber plug.
- 5 Empty the reservoir and rinse it with clean water. Then close the pouring hole.
- 6 Never wash the base (body) of the device in water or immerse it in water. After each use, clean it with a soft cleaning cloth moistened with water. Do not use harsh cleaning agents, alcohol, thinners or solvents. They can damage the surface.
- 7 Allow the device to dry thoroughly before reassembling.
- 8 After assembly, charge the battery and store the device.

Technical specifications

AC adapter:	220 - 240 V~/50 - 60 Hz 5 V/1 A (not supplied)
Battery voltage:	3.7 V, 2200 mAh
Power devices:	12 W
Operating time of a charged battery: approx.	40 minutes
Charging time of an empty battery:	< 3.5 hours
Battery type:	lithium
Weight:	0.48 kg (without accessories)
Dimensions (w x h x h):	28 x 36 x 8 cm
Volume of the container for dirty water:	60 ml
Width of squeegee:	28 cm
Noise level:	68 dB (A)

The declared value of the noise emission of this appliance is 68 dB (A), which represents level A of the acoustic power with respect to the reference acoustic power of 1 pW.

The right to make changes reserved!

Producer:

ORAVA retail 1, a.s.
Seberíniho 2
821 03 Bratislava
Slovenská republika

Importer:

ORAVA retail 1, a.s.
Seberíniho 2
821 03 Bratislava
Slovenská republika

ORAVA distribution CZ, s.r.o.
Ostravská 494
739 25 Sviadnov
Česká republika

INSTRUCTIONS AND INFORMATION REGARDING THE DISPOSAL OF USED PACKAGING

Dispose of used packaging material at a municipal waste disposal site.

DISPOSAL OF USED ELECTRICAL AND ELECTRONIC EQUIPMENT

This symbol on the products or in the accompanying documents means that used electrical and electronic products should not be mixed with general household waste. For proper disposal, recovery and recycling, please return these products to designated collection points. Alternatively, in some countries of the European Union or other European countries, you may return your products to your local retailer when purchasing an equivalent new product. By ensuring this product is disposed of correctly, you will help prevent potential negative consequences for the environment natural resources and help prevent potential negative effects on environment and human health, which could be the consequences of improper disposal waste. Contact your local authority or nearest office for more details collection point. Improper disposal of this type of waste may result in penalties in accordance with national regulations.

For business entities in the countries of the European Union

If you wish to discard electrical and electronic equipment, please request the necessary information from your seller or supplier.

Disposal in other countries outside the European Union

This symbol is valid in the European Union. If you wish to discard this product, please request obtain the necessary information on the correct method of disposal from the local authorities or from the your supplier.



This product meets all the essential requirements of the EU directives that apply to it.