

Multifunctional kitchen mixer

orava

RM-1200
Instruction manual

EN



CE

RM-1200

Intended use of the device

The appliance is intended for mixing liquid, soft and semi-hard foods (pulpy fruits and vegetables) and / or for mixing frozen foods and crushing ice and / or chopping nuts, spices, etc., in containers intended for preparation, to the range that is determined by the technical and operational parameters and functions of the equipment, safety and user instructions and the external influences of the operating environment.

ORAVA electrical appliances are manufactured according to the knowledge of the current state of technology and recognized safety and technical rules. Nevertheless, incorrect and unprofessional use or use contrary to the intended purpose may create a risk of injury or endanger the life of the user or a third party, or damage to equipment and other property.

1. GENERAL SAFETY INSTRUCTIONS AND WARNINGS

- This document contains important safety instructions and warnings for safe, correct and economical operation of the electrical equipment. Its compliance helps the user avoid risks, increase reliability and product life.
- In this document, the general term product is used in text parts such as: electrical equipment - any device used for the production, conversion, transmission, distribution or use of electricity.
- From the point of view of the purpose of using electricity, the concept of electrical equipment in the strict sense of the word will include the following categories:
 - household electric appliances,
 - information and communication equipment,
 - consumer electronics,
 - lighting equipment,
 - electrical and electronic tools,
 - toys and equipment for sporting and recreational purposes,
 - medical devices (aids),
 - monitoring and control devices,
 - vending machines.

1.1 General safety instructions

- Before commissioning the unit, we recommend that you carefully read the operating instructions and operate the equipment in accordance with the instructions!
- The safety instructions and warnings in this manual do not cover all the possible conditions and situations that may arise when using the device. The user must understand that a factor that can not be incorporated into any of the products is responsibility and caution. These factors must therefore be ensured by users / users who use and operate this device.
- Failure to follow the safety instructions and warnings is forbidden by the manufacturer for any damage to health or property!
- Make sure that the appliance is complete and shows no signs of damage before using the appliance for the first time. If the product is defective or if it has any visible damage, do not use the product.

- Keep the operating instructions as close to the device as possible throughout its service life. Always keep the operating instructions together with the appliance for future use and use by new users.
- Use the appliance only for the purpose for which it is intended and in the manner specified by the manufacturer.
- The appliance is intended for home and similar indoor use, with no special focus.
- It is not a professional device for commercial use.
- Do not change the technical parameters and features of the device by unauthorized modification or modification of any part of the device.
- The manufacturer is not responsible for damages caused during transportation, misuse, damage or destruction of the equipment due to adverse weather conditions.

1.2 Safety of the operating environment

- Do not use the device in an industrial environment or outside environment.
- Always keep the operating environment clean and well lit.
- Do not place the device on an unstable surface. Overriding or dropping the device may result in personal injury or damage to the device.
- Do not expose the unit to direct sunlight or excessive heat sources.
- Do not use an electric appliance in areas with flammable liquids, gases or dust. The appliance may be the source of scaling, which can result in the ignition of dust or vapors.

Features of the operating environment

1. Ambient temperature: +5 ÷ +40 ° C
 2. Humidity: 5 ÷ 85%
 3. Altitude: ≤ 2 000 m
 4. Occurrence of water: intermittent condensation of water or occurrence of water vapor
 5. Occurrence of foreign bodies: amount and type of dust are not significant
Protection class: IP20
- Other characteristics of the operating environment (mechanical stress - shocks and vibrations, occurrence of plant, animals, weather effects) are negligible in terms of effect on the correct and safe use of electrical equipment.

1.3 Electrical safety

- Before connecting the appliance to the power supply for the first time, make sure that the voltage on the appliance label corresponds to that of the household electrical outlet.
- The electrical appliance is designed for mains supply 230 V ~. The electrical safety of the appliance is guaranteed only if it is properly connected to the electricity grid.
- Only use a power cord with a plug (mains lead) that came with the device and compatible with a wall outlet. Using another cable may result in fire or electric shock.
- Always connect an electrical appliance to an easily accessible power outlet. In the event of an operating fault, the appliance must be switched off as soon as possible and disconnected from mains supply.
- Do not pull the power cord / power cord by pulling on the cord/cord. Disconnect the power cord by pulling the plug behind the power cord / power cord plug.
- If you use an extension cord, check that the total rated (ampere) power of all devices connected to the extension cord does not exceed the maximum current rating of the extension cable.
- If you need to use an extension cord or power supply block, make sure that the extension cord or power pack is plugged into a power outlet, and not to another extension cord or power supply. Extension power cord or power supply block must be designed for grounded plugs and plugged into a grounded outlet.
- The power plug of the appliance must be compatible with the mains socket. Never use any adapters or modify the socket in any other way. Do not use inappropriate or damaged sockets.
- To avoid electrical shock, plug the power cables into properly grounded electrical outlets. If the device is equipped with a 3-pin power supply cord, do not use adapters that do not have a grounding element or remove the grounding element from the plug or adapter.
- Do not bend, crush or otherwise expose the power cord / power cord of the appliance to mechanical stress or external heat sources. Damage to the power cord may result in electric shock.
- If the power cord is damaged, disconnect the appliance from the mains and do not use it again. If the power cord / power cord is damaged, it must be replaced by the manufacturer, its service department, or a qualified person to avoid the risk of electric shock.
- Regularly check and maintain the electrical appliance as well as the power cable. Disconnect the power plug regularly and clean it if necessary. Pollution by dust or other substances may cause disruption of the insulating state and consequently fire.
- Do not expose the appliance to water or moisture. The ingress of water into the appliance increases the risk of electric shock. If the power cord is wet or the appliance gets water, disconnect it immediately from the mains. If the appliance is plugged into a mains socket and if possible, turn off the power supply before attempting to disconnect the power supply. If you are pulling wet wires from a live power source, be very careful.
- If the electrical equipment is installed (connecting) the protective covers are dismantled, the electrical parts must not be accessible to the user when the installation is finished.

1.4 Safety of persons

- This appliance is intended for use by persons without an electrotechnical qualification (layperson) according to the instructions specified by the manufacturer.
- Device operation includes activities such as switching on and off, user manipulation and setting of operating parameters, visual or auditory inspection of the equipment, and user cleaning and maintenance.
- This appliance can be used by children 8 years of age and older and persons with reduced physical, sensory or mental abilities or lack of experience and knowledge only when under the supervision or guidance of the responsible person have been instructed to use the appliance in a safe way and understand the potential hazards .
- Cleaning and user maintenance can be carried out by children 8 years of age and older only under the supervision of the responsible person.
- Children may not play with the appliance.
- Always keep the appliance out of reach of children during use and operation. Be sure to unplug the appliance even for a freely accessible power cord.
- Always be careful when operating the electric appliance. Do not use an electric appliance if you are overly tired, under the influence of medication or narcotic drugs that reduce attention and focus. Inattention during operation may result in serious injury.

1.5 Cleaning, maintenance and repairs

- Observe the normal user cleaning and maintenance of the appliance in the recommended way. Do not use solvents or harsh cleaners for cleaning. Pollution and visible stains from finger contact, respectively. The hands can be cleaned using detergent detergents specially designed to clean household appliances.
- If you do not use the appliance, clean it or disconnect the appliance from the power supply when the appliance is faulty.
- Electrical appliances that are cleaned after use and are not intended to be completely or partly immersed in water or other liquid, protect against the effects of dripping and / or splashing water and before immersion.
- Electric household appliances, like all other technical devices, are subject to the surrounding environment and natural wear. Since the legal framework of regular maintenance is not laid down for lay-in electrical household appliances, the manufacturer recommends that the user have the appliance checked and cleaned at least once a year by a specialist workshop.
- By doing so, it is possible to achieve safety, operational reliability and increased service life.
- Do not disassemble the electric appliance! The appliance works with a dangerous voltage. For this reason, always switch off the appliance and disconnect it from the mains supply during user maintenance. In the event of a fault, please have the repair serviced by an authorized service center.
- Before calling a service:
 1. Turn the appliance off and on to make sure the fault reappears.
 2. If the malfunction of the appliance still persists after these operations, call the nearest specialist service center.
- Never repair the electric appliance yourself!
- Unauthorized, unqualified and improper use of an electric appliance may result in electric shock or other serious injury.
- Only carry out the warranty or post-warranty repair of an electrical appliance to an authorized qualified person ^(*).

^(*) Competent qualified expert: the sales department of the manufacturer or importer or the person qualified and authorized to carry out this type of activity with the ability to avoid all risks.

2. 2. Special Safety Instructions. Read carefully!

- Electrical equipment is designed and manufactured in such a way that ensure safe operation and use by persons without professional qualifications. Despite all the measures taken by the manufacturer to ensure safe use, handling and use, it carries with it some residual risks and associated potential hazards.
- The following symbols and their meanings have been used on the device and in the accompanying documentation to warn of possible hazards:



This symbol alerts users that the device is operating a dangerous electrical voltage. Do not remove protective covers on the device. Failure to observe the safety instructions during use and operation of the device may result in:
Danger of electric shock! Danger of serious injury or life threatening!



This symbol alerts users that the following precautions can be avoided if the following precautions are observed when operating and operating the device:
Danger of serious injury or life threatening!
Danger of damage to equipment or other damage to property!



This symbol alerts users that the following precautions can be avoided if the following precautions are observed when operating and operating the device:
Danger of tearing or puncture of your fingers!



This symbol means that the product is made with a double insulation between hazardous live parts (parts with dangerous voltage from the mains) and parts that are accessible in normal use.

Transportation/Transfer

- When transporting and using, for example, of the transport cart, be careful when moving, to avoid overturning the device.
Only transport/transmit the device after thorough inspection of the space and routes, which must be unobstructed.
Never transfer the device while in operation. Do not carry the device while it is plugged into a wall outlet.

Warning!

- Some surfaces may become warm when operating the machine. Do not touch hot surfaces! Never transfer the appliance until it has cooled down to ambient temperature.
- Transfer the device firmly by both hands to the bottom edge of the base or fixed parts of the body.
- Make sure that your hands and equipment are not damp or slippery when carrying.
- Only persons who are competent and sufficiently physically fit to carry the device (in view of the size and weight of the device) can only be transported. There is a risk of serious injury or life threatening!
There is a risk of damage to the device!

Expand/Packaging

- Unpack the equipment and accessories before putting it into service and remove all parts of packaging material and labels. Store the packaging in a safe place, especially out of the reach of children and unaccompanied persons, or dispose of them safely.
There is a risk of serious injury!
Risk of suffocation!

Check/Startup

- The appliance is designed for food preparation. Therefore, thoroughly clean all parts of the appliance before commissioning it, following the instructions in the „Commissioning“ section. „Cleaning and maintenance“.
- Never clean the appliance (its drive unit with electrical parts and controls) and the power cord with the plug in a way (under running water) that could cause the liquid to flow into the device.
- Clean these parts with a damp cloth only and wipe dry or let it dry.
- Only clean the appliance if it is switched off and disconnected from the mains.
- We recommend performing both initial and subsequent regular machine inspections.
- Never use the appliance if it is incomplete, damaged or damaged in any way during transportation or use. Do not use non-original and incomplete parts of the device and its accessories.
There is a risk of serious injury!
There is a risk of electric shock!

Location/Installation

- Only place the appliance on straight, firm and stable pads - kitchen work desks and furniture parts, suitable for the location of kitchen utensils.
- Always make sure that the place you want to place the device has enough space, mechanical strength and appropriate lighting.

Warning!

- Do not expose the device to:
 - direct sunlight, sources and equipment producing heat,
 - vibration and mechanical stress,
 - excessive dust,
 - water and excess moisture,
 - insect,
 - an aggressive external environment.
- Do not use or dispose of the appliance:
 - to unstable tables or parts of furniture,
 - on an uneven and dirty surface,
 - on the sealing edge of tables or parts of furniture,
 - in the vicinity of containers with water or other liquids.
- Do not cover the appliance in part. Do not place any objects on the device. Do not insert or allow the foreign bodies to enter the holes of the device covers.
- Do not cover the openings of the airflow covers. Air ventilation ensures reliable and safe operation of the device.
There is a risk of electric shock!
There is a danger of fire!

Warning!

- Place the device in a place where children can not reach freely.
- Prevent children from handling the device. The device may overwhelm children and cause serious injury.
- Mechanical damage (breakage or breakage of parts and covers) of the device can cause serious injury.
There is a risk of serious injury!
There is a risk of damage to equipment or other property damage!
- Do not place or use the appliance near water-containing containers. If the appliance falls into the water, do not remove it! First, pull the power cord plug out of the mains socket and then select the appliance from the water. In such cases, take the device for inspection to a specialist service to check that it is safe and working properly.
There is a risk of electric shock!
There is a risk of electrical short circuit!

Operation/Supervision

Warning!

- This device must only be used with original parts and accessories.
- Always make sure that the device is properly assembled and that none of its parts is damaged before using the appliance. Do not use incorrectly assembled and damaged devices.
- Always use the appliance with a properly fitted lid / container cover.
- Only fill the container (primary filling with the uncovered container) when the appliance is turned off. If you fill the foodstuff in the container during the operation of the appliance, do so only through the filling opening (the lid) at the age of the container.
- Always switch off and unplug the power cord from the wall outlet before replacing the accessory or accessory parts of the device, before installing and dismantling, and before cleaning and servicing.
There is a risk of serious injury!
- Always keep your device under control during use and operation!
- This device is not intended to be operated via a programmer, an external time switch or a remote control, as there is a risk of fire when the device is covered or incorrectly positioned.
- Do not switch the device on or off by plugging in or pulling out the power cord from the AC outlet.
- Always connect the appliance to mains power supply for normal use, then turn on the main power switch.
- When you have finished using the appliance, turn off the main switch and then pull the mains cord out of the mains socket.
- Do not use the device if the main power switch does not work.
- The device is under dangerous voltage when the power supply is connected.
There is a risk of serious injury!
- The device contains rotating parts with sharp edges - rotating knives.

Warning!

- Do not bend your fingers and do not place other objects in the work area - inside the container and the rotating parts when it is in operation.
- If the workspace needs to be handled (cleaning the rotating parts of the trapped food) - always only when the appliance is switched off, disconnected from the power supply and the rotating parts are completely stopped, use only the specified accessories of the appliance or a suitable item, plastic knife, plastic spoon / squeegee. Do not use metal objects.

Warning!

- After switching off the drive, the drive of the rotating parts will recharge for a certain amount of time. Always wait until the rotating parts stop completely before handling the equipment or the container's workspace.
There is a risk of serious injury!
There is a risk of tearing / puncture of the fingers!
- Take care during use and operation of the appliance so that you do not come into contact with the rotating parts with loose hair, free ornaments or loose clothing.
There is a risk of serious injury!
- Do not connect the power cord to bundles. The power cord must remain accessible for safe disconnection of the appliance from the power supply.
- Do not let the cord hang loose and do not allow it to be freely accessible and reachable by children.
- Never leave your device freely accessible and do not leave it with a loose cord. Children could download the device for a network cord.
- Do not store the appliance with a wrapped cord around your body. Unfold the network cord „in the way it was put in the original packaging by the manufacturer.
There is a risk of serious injury!
- Never overload the equipment beyond the limits specified by the technical specifications!
- Do not switch on the appliance unless the container is filled with sufficient fluid / food.
- Do not exceed the maximum content/volume of processed foods indicated on the containers or recommended in the food process information in this manual.
- Allow the food to cool before processing the heat treated food. Do not process food with a temperature higher than 60C.
- Before processing deep-frozen foods, allow food to thaw first to the temperature at which food can be divided into smaller (recommended) parts. Do not process excessive pieces of deep-frozen food.
- Always divide the device to the recommended operating intervals and set the operating mode (continuous operation/breakthrough time) and follow these instructions.

- If you notice any unusual occurrences (vibrations, sounds, smells, smoke, etc.) while using the device, switch off the device immediately and unplug it from the mains. Have the appliance checked by a specialist workshop.
There is a risk of serious injury!
There is a risk of damage to equipment or other property damage!
- Only install and disassemble the device and its parts when the device is switched off and disconnected from the mains.
There is a risk of serious injury!
- Always clean the equipment and accessories immediately after use and dispose of all residues of processed food.
- Store the device in an upright position - especially its drive unit.
- If any safety component/component (mechanical, electrical/electronic) is part of the device, never disable this part/component! If the safety component/component is damaged or not working, do not use the appliance!
- Do not use the safety parts / components for switching on or off. switch off the device.
- The machine's operating time is 1 minutes. After 1 minutes, stop operation for at least 2 minutes.
- Never underestimate the potential hazards and take extreme caution !!!

Charakteristické vlastnosti

Zariadenie je určené na spracúvanie rôznych potravín. Umožňuje veľmi účinné mixovanie aj šľahanie a pod.

Je vyrobené z kvalitných a zdraviu vyhovujúcich materiálov.

Pred prvým použitím

Zariadenie počas príprav nepripájajte do elektrickej siete.

Zariadenie vybaľte a odstráňte z neho všetok obalový materiál. Aby ste zo zariadenia odstránili akékoľvek nečistoty, ktoré mohli vzniknúť počas procesu balenia, vyčistite vnútorný priestor, nože a kryt suchou handričkou, ktorá nepúšťa vlákna. Pri čistení dávajte pozor, aby ste sa neporanili na ostrých nožoch. (Pozrite časť „Čistenie a údržba“ v tomto návode.)

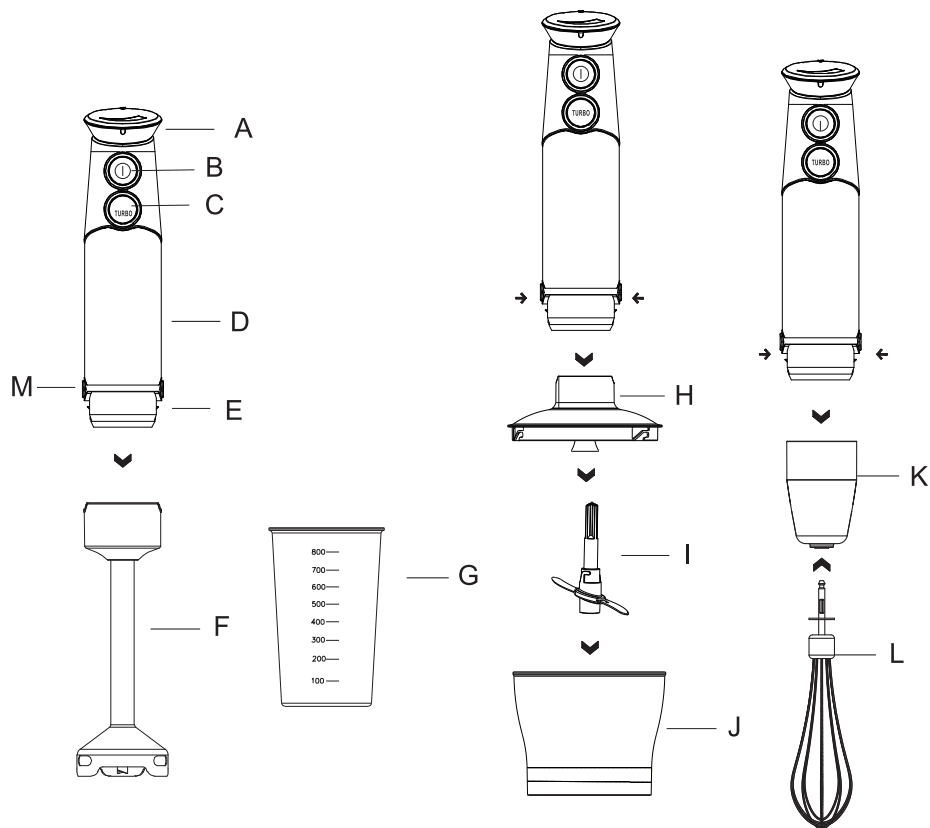
Opláchnite príslušenstvo vo vlažnej vode. Teleso motora zariadenia neponárajte do vody! Povrch vyčistite handričkou navlhčenou vo vode.

Všetky diely dôkladne vysušte.

Nikdy nenamáčajte teleso s motorom vo vode alebo inej tekutine!

Len na domáce použitie!

Description of parts



- A** speed controller
- B** button ① for on/off
- C** TURBO button for max. power
- D** motor unit with handle
- E** place of division of the motor part and the mixing handle
- F** mixing knives (stainless steel)
- G** mixing/beating bowl
- H** chopper lid
- I** knives for chopping bowl
- J** cutting container
- K** whisk holder
- L** whisk
- M** buttons (on both sides of the motor unit) for releasing the removable accessories

Assembling the mixing handle and using it with the motor unit

Prepare the device for operation according to the following steps.

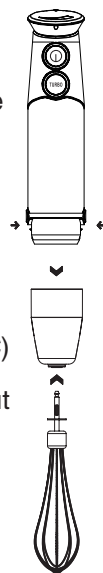
Mixing with a blender

1. Hold the motor unit with one hand and the mixing handle with the other hand.
2. Place the mixing handle (F) on the motor unit (D). Press the mixing handle onto the motor unit until it clicks into place. Do not connect the power cord to the power outlet before the device is fully assembled!
3. Put the food to be mixed into a suitable container and bring the mixing handle closer to the food.
4. Plug the power cord into an electrical outlet.
5. Use the speed controller (A) to select the required speed and press the button ① (B) turn on the blender. By turning the regulator (A) clockwise you increase the speed, by turning it to the opposite side you decrease the speed.
6. If you need maximum speed when mixing, press the TURBO button (C)
7. For smooth mixing, alternately press and release the on/off button (B) and smoothly vertically dip and rise the mixing handle into/out of the food.
8. After finishing work, disconnect the power cord from the electrical outlet.
9. To release the mixing handle, press the release buttons at the same time (M) and remove the whisk attachment.



Whipping with a mixer

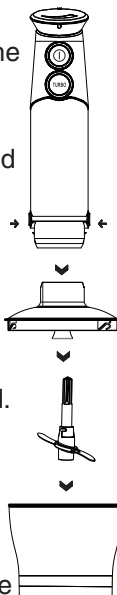
1. Hold the motor unit with one hand and the mixing handle with the other hand.
2. Place the whisk holder (K) on the motor unit (D). Press the beater handle onto the motor unit until it clicks into place. Do not connect the power cord to the power outlet before the device is fully assembled!
3. Put the food to be whipped into a suitable container and bring the whisk attachment closer to the food.
4. Plug the power cord into an electrical outlet.
5. Use the speed controller (A) to select the required speed and the button ① (B) turn on the blender. By turning the regulator (A) clockwise you increase the speed, by turning it to the opposite side you decrease the speed.
6. If you need maximum speed when whipping, press the TURBO button (C)
7. For smooth whisking, alternately press and release the on/off button (B) and smoothly vertically dip and rise the mixing attachment into/out of the food.
8. After finishing work, disconnect the power cord from the electrical outlet.
9. To release the whisk, press the release buttons (M) at the same time and remove the whisk.



Chopping with a blender

Follow the steps below to assemble the device for processing food, such as fine chopping, etc.

1. Place the supplied chopping container on a dry, level and firm surface. Do not connect the power cord to the power outlet before the device is fully assembled!
2. Place the chopping knife in the container (I) and place the lid (H) on top of the container. Beware of injury, the knives are sharp!
3. Place the motor unit on the assembled container together with the lid and chopping knives as far as it will go so that it clicks.
4. If you want to chop with chopping knives, put only 1 cup (measurement) of food at a time into the container. Before processing, cut larger pieces of food into approx. 2.5 cm cubes.
Do not process more than 1 cup of food at a time!
5. Chop finely.
6. After finishing work, disconnect the power cord from the electrical outlet and remove the motor unit. When opening the container, hold the container firmly with one hand and lift the lid with the other hand.
7. When removing food from the container, always remove the knives first. Handle knives with care. They are sharp!
Wipe the food from the container and from the knives with a rubber spatula.
8. After finishing work, disconnect the power cord from the electrical outlet.
9. To release the whisk, press the release buttons (M) at the same time and remove the whisk.



Preparation times and speed settings

Ingredient	Quantity in g/ml/pc	Speed	Mixing time
Baby food, sauces	100 to 300 g	1	approx. 45 s
Mixed drinks	100 to 500 g	MAX	approx. 30 s
Fruit vegetables	100 to 200 g	1	approx. 45 s
Cheeses	50 to 100 g	1	approx. 30 s
Meat	150 g	1 to MAX	approx. 30 s
Nuts (shelled)	50 g	MAX	approx. 15 s
Whipping cream	200 ml	MAX	approx. 50 s
Egg whites	4 pc	MAX	approx. 50 s

The processing time of the ingredients depends on how thoroughly you want to blend the inserted foods.

Warning!

The maximum time of continuous operation of the appliance is 1 minute. Then let it cool for about 3 minutes. If you are using the appliance to blend sticky or harder foods, stop operation after just 30 seconds and let the appliance cool down for about 3 minutes.

Tips for maximum effective mixing

Before putting them in the container, you must pre-cut hard fruits and vegetables into pieces with a size of approx. 1 cm. Even softer types of food should be pre-cut into smaller pieces before mixing. This will increase the mixing efficiency. If you are preparing a multi-ingredient dish, which requires mixing individual ingredients at different levels, mix the individual ingredients of the dish separately.

- To cut fruit/vegetables, put the fruit/vegetables into the container in the amount of approx. 2 cups. Blend continuously until you reach the desired consistency.
- To blend fruits/vegetables, add about 1 cup of liquid to 1 cup of fruit/vegetables to the hard fruit/vegetables in the container. For soft fruits/vegetables, add about 1/2 cup of liquid per 1 cup of fruit/vegetables to the container.
- Avoid overmixing. Blend in seconds, not minutes. Premixing will create a mushy consistency.
- Do not overfill the mixing bowl.
- First fill the container with a liquid, then with a solid state (unless the recipe prescribes otherwise).
- When mixing drinks, you can put all the ingredients into the container at the same time.
- When mixing food in a solid state, pre-cut the food into small pieces (approx. 1 cm) and add it gradually.
- While blending, add ice one cube at a time. After mixing, you can add another cube. Hold the container gently with your hand while mixing.
- Blend ice only when there is liquid in the container. Use cups of water.
- If mixing stops during operation, turn off the device and leave it out of operation for a while.

Chopping (cutting finely)

You can also use the device to chop not too hard foods. You can finely chop the following foods according to the table:

Processed food	Amount per serving
Chocolate	max. 100 g
Cheese	max. 200 g
Meat	max. 500 g
Vegetables and fruits	100 - 300 g
Onion	max. 500 g

Notes

- When chopping hard cheese or chocolate, do not use the device for a long time without a break. Otherwise, the food will overheat and melt.
- Standard interval for chopping: approx. 15 seconds

Preparation of creamy dishes

Processed Food

Eggs
Soft cheese

Quantity per Dose

2 - 5 pcs (time: 30 - 70 seconds)
125 - 350 ml (time: 20 seconds)

Notes:

- You can use the mixing stick to mix cheese and eggs and to quickly create mayonnaise or puddings.
- Do not use the mixing rod to knead the dough.

Complete mixing

Always add the food first into smaller pieces (about 2 cm) and mix. Remove the food from the bowl.

Recommended foods: cooked meat, raw and cooked fish and poultry, fruits and vegetables, buttermilk, baby food.

Whipping

Air whipping of creams or eggs.

Cleaning and maintenance

Wash the mixing handle in warm water with detergent, wipe it off and dry it carefully. Do not leave parts wet.

Do not use solvents or harsh cleaners to clean any part of the machine.

Wash the attachment immediately after use to prevent food residues from drying out. Use a dish brush.

Never immerse the engine unit in water or any other liquid! Wipe the engine unit and power cord with a dry cloth. The engine is lubricated with durable Vaseline.

Does not require lubrication.

Warning!

The knives on the attachment are sharp. Handle them carefully!

Technical specifications

Power supply:	220 - 240 V~ 50/60 Hz
Power consumption:	1 200 W
Protection Class:	II
Time of continuity of operation (KB):	1 min.
Speed:	16 000 min. \pm 5% RPM
Mixer dimensions:	6,4 x 40 x 9 cm (with mixing attachment)
Weight:	0,6 kg (without attachment)
Noise level:	75 dB (A)

The declared noise emission of this appliance is 75 dB (A), which is the level of acoustic power A with respect to the reference sound power level of 1 pW.

We reserve the right to make changes!

Producer:

ORAVA retail 1, a.s.
Seberíniho 2
821 03 Bratislava
Slovenská republika

Importer:

ORAVA retail 1, a.s.	ORAVA distribution CZ, s.r.o.
Seberíniho 2	Ostravská 494
821 03 Bratislava	739 25 Sviadnov
Slovenská republika	Česká republika

INSTRUCTIONS AND INFORMATION REGARDING THE DISPOSAL OF USED PACKAGING

Dispose of used packaging material at a municipal waste disposal site.

DISPOSAL OF USED ELECTRICAL AND ELECTRONIC EQUIPMENT



This symbol on the products or in the accompanying documents means that used electrical and electronic products should not be mixed with general household waste. For proper disposal, recovery and recycling, please return these products to designated collection points. Alternatively, in some countries of the European Union or other European countries, you may return your products to your local retailer when purchasing an equivalent new product. By ensuring this product is disposed of correctly, you will help prevent potential negative consequences for the environment natural resources and help prevent potential negative effects on environment and human health, which could be the consequences of improper disposal waste. Contact your local authority or nearest office for more details collection point. Improper disposal of this type of waste may result in penalties in accordance with national regulations.

For business entities in the countries of the European Union

If you wish to discard electrical and electronic equipment, please request the necessary information from your seller or supplier.

Disposal in other countries outside the European Union

This symbol is valid in the European Union. If you wish to discard this product, please request obtain the necessary information on the correct method of disposal from the local authorities or from the your supplier.



This product meets all the essential requirements of the EU directives that apply to it.