

Lint remover

Orava

LR-200

Instruction manual

EN



Dear Costumer,
*thank you for purchasing our product. In order to be able to use it safely and effectively,
please read this instruction manual carefully.*

LR-200



1. SAFETY INSTRUCTIONS AND WARNINGS

- Before using the appliance for the first time, read the user manual carefully and make sure you have read all the instructions.
- There is a risk of injury if the user manual and the instructions given in it are not followed.
- This appliance, including accessories, is intended only for the purpose specified in this manual. Never use the appliance for any other purpose.
- The manufacturer is not responsible for the use of the device that is not in accordance with the operating instructions for operation and for non-observance of safety instructions and warnings.
- This appliance can be used by children from 8 years of age and persons with reduced physical, sensory or mental capabilities or lack of experience or knowledge, if they have been given supervision or instruction concerning the safe use of the appliance and understand the dangers involved connected. Children must not play with the appliance. Cleaning and maintenance by the user must not be carried out by unsupervised children.
- Children must not play with the appliance!
- The appliance has a built-in rechargeable battery and can only be charged from a USB source/power supply (adapter with USB output, PC with USB output), before connecting pay attention to the instructions of the manufacturer of these sources.
- The appliance must only be powered by a safe low voltage that corresponds to the marking on the appliance.
- When using an extension cable, always make sure that it is not damaged and complies with applicable standards.
- Do not leave the power cord hanging over the edge of the table where children can pull it off.
- Check the power supply regularly.
- The power supply must not be damaged by sharp or hot objects, open fire, immersed in water or bent over sharp edges.

1.2 Safety of Use



WARNING!

If the appliance is used incorrectly, there is a risk of injury.

- This appliance is intended for household use.
- Never use this device for purposes other than to remove clumps of fine fibers (fluff, knots) from the surface of the fabric and only according to the safety instructions and warnings given in the user manual.

- Never use the appliance/power supply if it is damaged, dropped on the ground, in water, if it is not working properly. In such cases, contact the service center to check the safety of its use.
- Do not attempt to repair the appliance yourself or modify it in any way, contact a specialized service.
- Use the appliance only with accessories designed for this type. Do not use damaged or deformed accessories.
- Do not insert or remove the power supply/source into or out of the electrical outlet with wet hands or by pulling on the cord.
- Do not charge the device outdoors or near hot surfaces.
- Store, use, charge the appliance at a temperature between 0 and 40 °C and keep it away from fire. Do not expose it to direct sunlight or high temperatures.
- Never submerge the appliance connected to the charging source in water or any other liquid, even partially!
- Never place the appliance/power supply/source near or on heat sources (eg stove, stove, radiator, induction plate, etc.).
- The appliance with a connected charging cable must not be used or charged in places where it could fall into a bathtub, sink or swimming pool. If the device falls into the water, do not remove it! Pull out the power supply from the electrical socket and only then can you take out the device. Take the appliance to a specialized service for inspection.
- Do not attempt to repair the appliance yourself.
- Before changing accessories, assembly, cleaning, maintenance, or if you leave it unattended, always disconnect it from the power supply and the mains.
- The appliance is NOT intended for outdoor use!
- The appliance is NOT intended for explosive environments!
- The appliance is NOT intended for commercial use!
- **The appliance is NOT intended for shaving or depilating the body!**
- **The appliance is NOT intended for grooming animals!**
- Do not use the appliance if the tray or platen is removed.
- Do not remove lint from clothing on people (directly on the body).
- **Do not leave the device unattended during operation!**
- The appliance is not intended for materials with an uneven surface and thin materials (for example, silk, etc.)
- Do not insert the appliance or accessories into any body openings.
- Never use or turn on the lint remover while it is charging
- When handling the appliance, always proceed in such a way as to avoid personal injury (e.g. cuts) or damage to the fabric.

- Do not place the switched-on appliance on soft surfaces that could be damaged by the hot parts of the appliance (e.g. linen, carpets, bed, towels).
- Do not modify the surface of the appliance in any way.
- If the device is overloaded or used in extremely high temperatures, electrolyte may leak from the battery. If you get contaminated with electrolyte, wash the affected area with soap and water, rinse with lemon juice or vinegar. In case of contamination of the eyes, rinse them with clean water for several minutes and seek medical help immediately.
- Do not use or charge the appliance if electrolyte is leaking from the battery.
- Only charge the appliance at normal room temperature.
- Do not expose the appliance to temperatures higher than 50 °C in order not to damage the batteries.

The following symbols and their meanings are used on the device and in the accompanying documentation:



This symbol warns users that if the safety instructions are not followed when using and operating the device, there is a risk of:

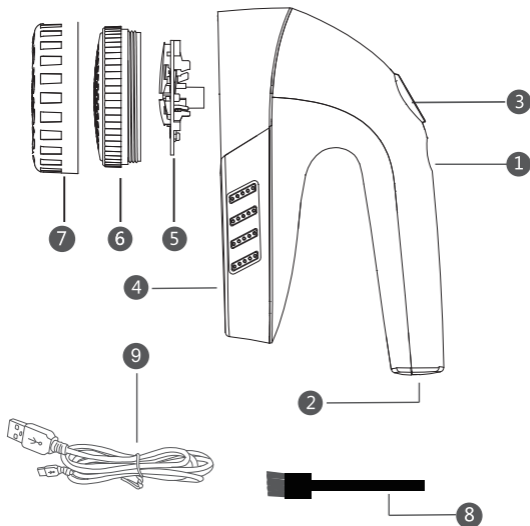
Risk of serious injury or life-threatening! Risk of equipment damage or other property damage!



This symbol means that the product is equipped with circuits in which the highest electrical voltage does not exceed the permissible values of the low safe voltage.

With such a device, electric shock cannot occur when touching live parts during normal operation, nor when touching non-live parts when the device malfunctions.

Parts description



1 Button  (off/on/speed setting)

2 Power USB-C connector

(connection of the supplied cable and a suitable AC power adapter)

3 LED display

4 Lint tray

5 Knives

6 Planchet

7 Attachment for higher cutting height

8 Cleaning brush

9 USB-C charging cable

Charging

1. Turn off the power switch.
2. Plug the USB-C connector of the supplied cable into the power USB-C connector on this device and the other USB connector into the USB connector on the optional AC adapter (DC output voltage 5V, 500-1000mA). Plug the AC adapter into an electrical outlet.
3. During charging, the LED display will light up and it will gradually show the charging value from 0 to 100. Charge the device for approx. 2.5 hours.
4. The duration of a charged battery is approx. 3 hours.

Notes

- The first charging takes about 2.5 hours.
- During normal use of the device, charge the battery for approx. 2.5 hours. Do not exceed the battery charging time disproportionately.
- To achieve optimal battery condition, use the device for the first three cycles until the battery is fully discharged, then always charge it to the maximum.
- Charge the device at temperatures between 5 and 40 °C.

Before using the device


Warning!

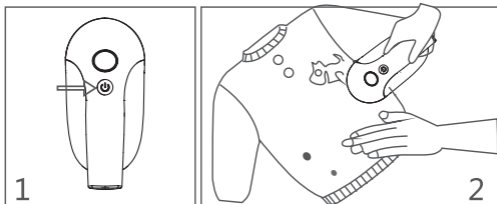
Do not use the device on clothes that have just been worn. There is a risk of injury!

To avoid damage, be careful with the following parts of clothing:

- buttons, zippers
- foreign objects (badges, brooches) - unfasten them before use
- a thin part of the fabric, garment hems, garment stitching or cuffs

Using the device

1. Press button  to turn on the device. The display lights up (Fig. 1).
2. Hold the device at a slight angle against the stretched fabric. Gently press it against the garment and move it back and forth to remove lint. Tighten the garment with the other hand. Move the device in different directions. As you gain experience, you can increase the pressure slightly. However, excessive pressure will not increase the quality of lint removal (Fig. 2).
3. For a higher cutting height, use the attachment for a higher cutting height (7).



4. You can set a higher speed by pressing button 1 again.
5. Turn off the device by pressing button 1 again. The display goes out.

Warning!

- Do not press too hard on the fabric, it could damage the fabric.
- Do not use lint remover on clothes!

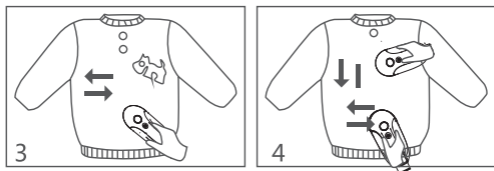
Different ways to use the device

1. Quick removal

Remove lint from smaller parts by sliding left and right (Fig. 3).

2. Removing lint which are hard to remove

Remove lint by sliding left and right and up and down several times (Fig. 4).



3. Removing lint from thin fabrics

Fold the garment into two layers and stretch it on a firm board.

4. Removing lint from wrinkled fabrics

Always straighten creases. If the fold cannot be straightened, avoid it.

5. Removing lint from structured patterned fabrics

Remove lint by sliding along the plastic pattern.

Cleaning and maintenance

1. Turn off the device (fig. 5).

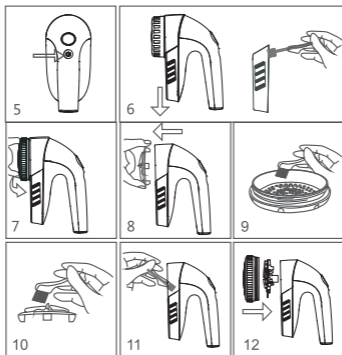
2. Remove the cover from the body of the device and empty the dirt from the reservoir (fig. 6).

3. Unscrew the frame with the planchet to the left (fig. 7).

4. Firmly grasp the inner knives at the edge of the head and pull them straight out (Fig. 8). Be careful not to cut yourself.

BEWARE THE KNIVES ARE VERY SHARP!

There is a risk of injury.



5. Clean the dirt in the planchet with the supplied cleaning brush (fig. 9).

6. Clean the dirt from the inner knives with the supplied cleaning brush (fig. 10 - 12).

BEWARE THE KNIVES ARE VERY SHARP!

7. After cleaning, reassemble all parts in the reverse order of disassembly.
- To prevent damage to the planchet and internal knives, put a protective cover on the device.
 - Be careful when handling knives to avoid injury.
 - Do not press on the planchet. It can get damaged.
 - Use a dry cloth to clean the surface.
 - Always remove lint from the lint container before it is completely full.
 - Clumps of fluff hidden between the planchet and the knives impair sharpness and rotation. Clean them with a brush.

Technical specifications

Power supply:	3,7 V built-in battery (Li-ion 1800 mAh)
Charging:	optional AC adapter with output direct voltage 5 V, 500 - 1000 mA (not supplied)
Dimensions (w x h x d):	11.3 x 15.7 x 7.5 cm
Power consumption:	5 W (when charging)
Weight:	240 g
Noise level:	73 dB (A)

The declared value of the noise emission of this appliance is 73 dB (A), which represents level A of the acoustic power with respect to the reference acoustic power of 1 pW.

Accessories:

LR-200	1 pc
Charging cable	1 pc
Cleaning brush	1 pc
Adapter for higher cut	1 pc
Operating instructions	1 pc

The right to make changes reserved!

Producer:

ORAVA retail 1, a.s.
Seberíniho 2
821 03 Bratislava
Slovenská republika

Importer:

ORAVA retail 1, a.s.
Seberíniho 2
821 03 Bratislava
Slovenská republika

ORAVA distribution CZ, s.r.o.
Ostravská 494
739 25 Sviadnov
Česká republika

INSTRUCTIONS AND INFORMATION REGARDING THE DISPOSAL OF USED PACKAGING

Dispose of used packaging material at a municipal waste disposal site.

DISPOSAL OF USED ELECTRICAL AND ELECTRONIC EQUIPMENT

This symbol on the products or in the accompanying documents means that used electrical and electronic products should not be mixed with general household waste. For proper disposal, recovery and recycling, please return these products to designated collection points. Alternatively, in some countries of the European Union or other European countries, you may return your products to your local retailer when purchasing an equivalent new product. By ensuring this product is disposed of correctly, you will help prevent potential negative consequences for the environment natural resources and help prevent potential negative effects on environment and human health, which could be the consequences of improper disposal waste. Contact your local authority or nearest office for more details collection point. Improper disposal of this type of waste may result in penalties in accordance with national regulations.

For business entities in the countries of the European Union

If you wish to discard electrical and electronic equipment, please request the necessary information from your seller or supplier.

Disposal in other countries outside the European Union

This symbol is valid in the European Union. If you wish to discard this product, please request obtain the necessary information on the correct method of disposal from the local authorities or from the your supplier.

DISPOSAL OF BATTERIES

Batteries contain substances harmful to the environment and therefore do not belong in normal household waste. Hand them over for disposal in accordance with applicable regulations and standards at their take-back locations.



This product meets all the essential requirements of the EU directives that apply to it.