



**orava**

**Lint remover  
LR-102**

EN

CE

## **The intended of use of the device**

The device is intended exclusively for removing clusters of fine fibers (tufts, knots) from the surface of textiles to the extent determined by technical and operational parameters and functions, safety and user instructions and external influences of the operating environment.

ORAVA electrical appliances are manufactured according to the latest knowledge and recognized safety and technical rules. Nevertheless, improper and unprofessional use or use contrary to the intended use may result in injury or endangerment of the life of the user or a third person, or damage to the device and other material values.

### **1. GENERAL SAFETY INSTRUCTIONS AND WARNINGS**

- This document contains important safety instructions and warnings for the safe, correct and economical operation of electrical equipment. Compliance with it helps the user to avoid risks, increase the reliability and service life of the product.
- In this document, the general term product is used in the text sections as:  
electrical equipment - is any equipment used for the production, transformation, transmission, distribution or use of electrical energy.
- From the point of view of the purpose of using electrical energy, the term electrical equipment in the narrower sense of the word will include the following categories:
  - electrical household appliances,
  - information and communication devices,
  - consumer electronics,
  - lighting devices,

- electrical and electronic tools,
- toys and equipment for sports and recreational purposes,
- medical devices (devices),
- devices for monitoring and control,
- vending machines.

### **1.1 General safety instructions**

- Before putting the device into operation, we recommend that you carefully study the operating instructions and operate the device according to the specified instructions!
- The safety instructions and warnings given in this manual do not cover all possible conditions and situations that may occur when using the device. The user must understand that a factor that cannot be built into any of the products is personal responsibility and caution. Thus, these factors must be ensured by users operating this equipment.
- By not following the safety instructions and warnings, the manufacturer is not responsible for any damage to health or property!
- If possible, keep the operating instructions close to the device throughout its lifetime. Always keep the user manual with the appliance for future use and for use by new users.
- Use the device exclusively for its intended purpose and in the manner specified by the manufacturer.
- The device is intended for use in the home and in similar indoor spaces intended for living without special focus.
- In addition to household use, this appliance is intended for the following uses:
  - in shops, offices and other similar work environments;
  - in farm buildings;
  - in hotels, motels and other residential environments;
  - in facilities providing bed and breakfast.

- Nejde o profesionálne zariadenie na komerčné použitie.
- Nemeňte technické parametre a charakteristiky zariadenia neautorizovanou zmenou či úpravou akejkolvek časti zariadenia.
- Výrobca nezodpovedá za škody spôsobené počas prepravy, nesprávnym používaním, poškodením alebo zničením zariadenia vplyvom nepriaznivých poveternostných podmienok.

## **1.2 Safety of the operating environment**

- Do not use the device in an industrial environment or outdoors!
- Do not expose the device to the effects of:
  - sources of excessive heat or open flame,
  - dripping or splashing water,
  - vibrations and excessive mechanical stress,
  - insects, animals and plants,
  - aggressive and chemical substances.
- The operating environment of the device must always be in accordance with the established basic characteristics.
- Characteristics of the operating environment:
  1. Ambient temperature:  $+5 \div +40$  °C
  2. Humidity:  $5 \div 85\%$
  3. Altitude:  $\leq 2,000$  m
  4. Occurrence of water: occasional condensation of water or occurrence of water vapor
  5. Occurrence of foreign bodies: the amount and type of dust are insignificant
  6. Degree of cover protection: min. IP20 (the device is protected from touching dangerous parts finger and not protected against the effects of water)

- This is not a professional device for commercial use.
- Do not change the technical parameters and characteristics of the device by unauthorized change or modification of any part of the device.
- The manufacturer is not responsible for damage caused during transportation, improper use, damage or destruction of the device due to adverse weather conditions

### **1.3 Electrical safety**

- Electrical devices of protection class III are devices that are powered by a low safe voltage source (battery or accumulator) and do not pose any danger to the user in terms of electric shock.
- Do not expose the electrical appliance to water or a humid environment.

### **1.4 Personal safety**

- This appliance is intended for use and operation by persons without electrotechnical qualifications - laymen, according to the instructions specified by the manufacturer.
- Device operation includes activities such as turning the device on and off, user manipulation and setting operating parameters, visual or auditory inspection of the device, and user cleaning and maintenance.
- This appliance can be used by children from 8 years of age and persons with reduced physical, sensory or mental capabilities or lack of experience or knowledge if they have been supervised or have been instructed in the safe use of the appliance and understand the dangers involved.
- Children must not play with the appliance!
- Cleaning and user maintenance must not be carried out by unsupervised children.
- Always keep the appliance out of the reach of children during use and operation. Do not forget that the appliance can also be pulled by a freely accessible power cord.

- Always exercise caution when operating an electrical appliance! Do not use the electrical appliance if you are excessively tired, under the influence of drugs or narcotic substances that reduce attention and concentration.
- Inattention during operation can lead to serious injury.

### **1.5 Cleaning, maintenance and repairs**

- Perform routine user cleaning and maintenance of the electrical appliance only in the recommended manner. Do not use solvents or harsh cleaning objects for cleaning. Dirt and visible stains from the touch of fingers or hands can be cleaned using detergents specially designed for cleaning household appliances.
- If you are not using the electrical appliance, cleaning it, or when there is a malfunction on the appliance, always disconnect the appliance from the power supply.
- Protect electrical appliances that are cleaned after use and are not intended for complete or partial immersion in water or other liquid from the effects of dripping and/or splashing water and from immersion.
- Electrical household appliances, like all other technical devices, are subject to the effects of the surrounding operating environment and natural wear and tear. Due to the fact that there is no legal framework for regular maintenance for electrical appliances used in the home by laymen, the manufacturer recommends that the user have the appliance checked and professionally cleaned at least once a year in a professional service.
- With such a procedure, it is possible to maintain safety, operational reliability and increase the operating life of the equipment.
- Do not disassemble the electrical appliance! The appliance works with dangerous voltage. For this reason, always switch off the appliance and disconnect it from the power supply during user maintenance. In the event of a malfunction, leave the repair to an authorized service.

- Before calling for service:
  1. Turn the appliance off and on to see if the fault recurs.
  2. If the appliance malfunction persists even after the mentioned actions, call the nearest professional service.
- Never repair the electrical appliance yourself!
- Unauthorized, unqualified and unprofessional intervention in the electrical appliance may result in electric shock or other serious injury.
- Entrust warranty and post-warranty repair of electrical appliances only to a qualified specialist(\*).

(\*) Relevant qualified professional: the sales department of the manufacturer or importer or a person who is qualified and authorized to carry out this type of activity with the ability to avoid all hazards.

## 2. Special safety instructions. Read carefully!

- The electrical equipment is designed and manufactured in such a way as to enable safe operation and use by persons without professional qualifications. Despite all the measures taken by the manufacturer performed for safe use, operation and use carry with them certain residual risks and possible dangers associated with them.
- To warn of possible dangers, the following symbols and their meaning have been used on the device and in the accompanying documentation:



This symbol warns users that if the safety instructions are not followed when using and operating the device, there is a risk of:  
Risk of serious injury or life-threatening! Risk of equipment damage or other property damage!



This symbol means that the product is equipped with circuits in which the highest electrical voltage does not exceed the permissible values of the low safe voltage.  
With such a device, electric shock cannot occur when touching live parts during normal operation, nor when touching non-live parts when the device malfunctions.

### Transportation/Carrying

- When transporting and carrying, be careful when moving to avoid overturning, falling and damaging the device.  
There is a risk of damage to the device!



### **Unpacking/Packaging**

- Before putting the device and accessories into operation, unpack and remove all its parts from the remains of packaging materials, labels and tags.
- Put the packaging materials in a safe place or keep them above all out of the reach of children and incompetent persons.  
Risk of serious injury!

### **Checking/Startup**

- We recommend performing initial and subsequent regular inspections of the device. Use the device only with accessories supplied and approved by the manufacturer.
- Never use the device if it is incomplete, damaged or its parts or accessories have been damaged during use (e.g. as a result of falling, wear).  
Risk of serious injury!
- This appliance can be used by children aged 8 and over and persons with reduced physical, sensory or mental capabilities or lack of experience and knowledge, provided they are supervised or have been instructed in the safe use of the appliance and understand the potential hazards. Cleaning and user maintenance must not be carried out by children unless they are over 8 years old and under supervision.
- Keep the device out of the reach of children under 8 years of age.
- Children must not play with the appliance.
- Before putting the device into operation, check and assemble it according to the instructions given in the section „Before use“.

- Never clean the device (body with electrical parts) in a way that could cause immersion in liquid and the liquid to flow into the device.
- Clean electrical parts only with a damp cloth and wipe dry or allow to dry.
- Keep the device clean and dry.
- If the device has been stored at low temperatures, acclimatize it first (approx ½ to 1 hour) in order to remove any moisture in the interior of the covers, stiffen the moving parts and preserve the mechanical strength of the plastic parts.

### **Operation/Use**

- This device is not intended for commercial use. The device is intended for home use. Use the device indoors only.
- The device is suitable for removing lint that forms on the surface of textiles and fabrics as a result of wear and tear when textiles rub against each other, or when textiles and the human body rub against each other.
- Lints are most often formed on the surface of textiles made of synthetic and mainly polyester fibers and on textiles containing admixtures of these materials.
- In order to avoid damage or deterioration of clothing or textiles, always verify the suitability of using the device on a small, less important area for wearing.
- The device is not suitable for removing fibers from very thin materials such as silk, microfiber, etc. The structure of the material may be damaged.
- Do not place the device near heat sources, e.g. heater.

### **Warning!**

- Never use the device to remove hair from parts of the human body.  
Risk of serious injury!

## **Warning!**

- Before any handling of the device (normal use, cleaning, etc.), always make sure that the device is turned off with the main switch.
- Do not turn on or use the device unless the blade of the rotary knives is properly seated and threaded on the device.
- Rotary knives move at high speed and are very sharp.
- At the same time, damage to the edge of the knives and the knives themselves may occur.
- Do not use the device if the blade of the rotary knives is damaged (e.g. broken, torn or part of the metal perforated surface is missing).
- Do not use the device while the lint and fiber residue container is in place. Risk of serious injury!  
There is a risk of damage to the device!
- Do not use the lint remover directly on people.
- Do not use the device on damp and wet textiles. Moisture in the fibers of the fabric results in clogging and soiling of the device and a reduction in the effect of the rotary knives.
- Do not use the device on textiles that are contaminated with solid and hard dirt.
- Do not insert any hard objects (eg metal fibers, wires, etc.) into the holes of the planchet. These objects can damage or even destroy the planchet and rotary knives.  
There is a risk of damage to the device!
- Use the device only on flat and firm surfaces. Do not use the device on soft, uneven mats or on mats with high and loose fibers.  
There is a risk of damage to the device!  
There is a risk of fabric damage!

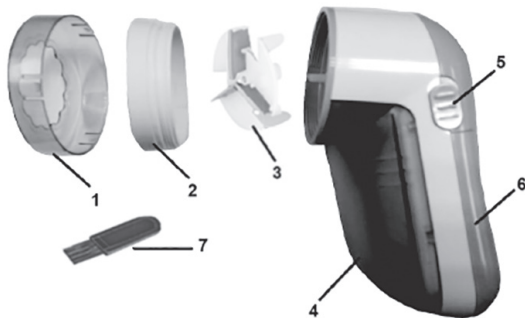
### **Warning!**

- Use the device on fabrics that are straight, have adequate tension and do not contain significant unevenness or folds.

### **Warning!**

- The device must be kept dry. The device must not be immersed in water or other liquids. Do not use the device in places where it could fall into a sink, bathtub or other container containing water, including a swimming pool.
- Never overload the device beyond the limits set by the technical parameters!
- Observe the operating mode of the device (time of operation/activity and breaks) according to the instructions for operation and use.
- Clean the device regularly. Contamination of the device may result in a decrease in operating parameters and possible subsequent irreversible damage.
- Do not expose the planchet to excessive mechanical pressure or other mechanical stress. Excessive pressure from solid and hard objects can cause permanent plastic deformation of the surface of the planchet and disable the device. Risk of serious injury!  
There is a risk of damage to the device or other material damage!
- Always put the protective cover on the planchet after using the device. This will prevent possible contamination or damage to the planchet.
- If the device includes any safety part/component (mechanical, electrical), never disable this part/component from operation! If the safety part/component is damaged or non-functional, do not use the device!
- Never underestimate the possible dangers and pay extra attention!!!
- Depending on the individual type, the device can be powered by a rechargeable built-in accumulator or replaceable batteries.

## Parts description



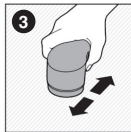
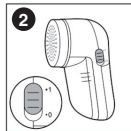
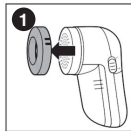
- 1 Protective cover
- 2 Planchet
- 3 Knives
- 4 Lint tray
- 5 Switch
- 6 Battery cover
- 7 Cleaning brush

## Using the device

1. Pull down to open the battery cover.
2. Insert 2 batteries type 1.5 V AA, observe the correct polarity.
3. Remove the transparent protective cover from the device (Fig. 1).
4. Switch on the device by moving the switch to position I (fig. 2).
5. Hold the device at a slight angle against the stretched fabric. Gently press it against the garment and move it back and forth to remove lint (Fig. 3). Tighten the garment with the other hand. Move the device in different directions. As you gain experience, you can increase the pressure slightly. However, excessive pressure will not increase the quality of lint removal.
6. Switch off the device by moving the switch again to position 0.
7. To avoid damage to the planchet, always put a protective cover on the device after use.

### **Warning!**

- Do not press too hard on the fabric, it could damage the fabric.
- Do not use lint remover on clothes!



## Different ways to use the device

### 1. Quick removal:

Remove lint from smaller sections by swiping left and right.

### 2. Removing stubborn lint:

Remove lint by swiping left and right and up and down multiple times.

### 3. Removing lint from thin fabrics:

Fold the garment into two layers and stretch it on a firm board.

### 4. Removing lint from wrinkled fabrics:

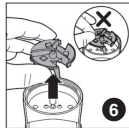
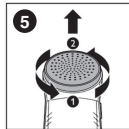
Always straighten the creases. If a crease cannot be straightened, avoid it.

### 5. Removing lint from structured patterned fabrics:

Remove lint by sliding along the plastic pattern.

## Cleaning and maintenance

1. Turn off the device.
  2. Slide the container downwards, remove it from the body of the device and empty the dirt from the container (Fig. 4).
  3. Unscrew the frame with the planchet to the left (fig. 5).
  4. Firmly grasp the inner knives on each side and pull them straight out (Fig. 6).
  5. Clean the dirt in the planchet with the supplied cleaning brush.
  6. Clean dirt from the inner knives with the supplied cleaning brush.
- BEWARE THE KNIVES ARE VERY SHARP!**
7. After cleaning, reassemble all parts in the reverse order of disassembly.





- To prevent damage to the planchet and internal knives, put a protective cover on the device.
- Be careful when handling knives to avoid injury.
- Do not press on the planchet. It can get damaged.
- Use a dry cloth to clean the surface.
- Always remove lint from the lint container before it is completely full.
- Clumps of fluff hidden between the planchet and the knives impair sharpness and rotation. Clean them with a brush.

## Technical specifications

<b>Power supply:</b>	3 V (2x 1,5 V AA)
<b>Dimensions (w x h x d):</b>	13 x 7,5 x 5,8 cm
<b>Power consumption:</b>	3 W
<b>Weight:</b>	182 g
<b>Noise level:</b>	70 dB (A)

The declared value of the noise emission of this appliance is 70 dB (A), which represents level A of the acoustic power with respect to the reference acoustic power of 1 pW.

**Accessories::**

LR-102	1 pc
Cleaning brush	1 pc
User manual	1 pc.

The right to change is reserved!

**Producer:**

ORAVA retail 1, a.s.  
Seberíniho 2  
821 03 Bratislava  
Slovenská republika

**Importer:**

ORAVA retail 1, a.s.  
Seberíniho 2  
821 03 Bratislava  
Slovenská republika

ORAVA distribution CZ, s.r.o.  
Ostravská 494  
739 25 Sviadnov  
Česká republika

## **INSTRUCTIONS AND INFORMATION REGARDING THE DISPOSAL OF USED PACKAGING**

Dispose of used packaging material at a municipal waste disposal site.

## **DISPOSAL OF USED ELECTRICAL AND ELECTRONIC EQUIPMENT**



This symbol on the products or in the accompanying documents means that used electrical and electronic products should not be mixed with general household waste. For proper disposal, recovery and recycling, please return these products to designated collection points. Alternatively, in some countries of the European Union or other European countries, you may return your products to your local retailer when purchasing an equivalent new product. By ensuring this product is disposed of correctly, you will help prevent potential negative consequences for the environment natural resources and help prevent potential negative effects on environment and human health, which could be the consequences of improper disposal waste. Contact your local authority or nearest office for more details collection point. Improper disposal of this type of waste may result in penalties in accordance with national regulations.

## **For business entities in the countries of the European Union**

If you wish to discard electrical and electronic equipment, please request the necessary information from your seller or supplier.

## **Disposal in other countries outside the European Union**

This symbol is valid in the European Union. If you wish to discard this product, please request obtain the necessary information on the correct method of disposal from the local authorities or from the your supplier.



This product complies with all the essential requirements of the EU directives that apply to it.