

Smoothie mixer

orava

RM-700

Instruction manual

EN



CE

RM-700

Intended use of the device

The appliance is intended for mixing liquid, soft and semi-hard foods (pulpy fruits and vegetables) and / or for mixing frozen foods and crushing ice and / or chopping nuts, spices, etc., in containers intended for preparation, to the range that is determined by the technical and operational parameters and functions of the equipment, safety and user instructions and the external influences of the operating environment. ORAVA electrical appliances are manufactured according to the knowledge of the current state of technology and recognized safety and technical rules. Nevertheless, incorrect and unprofessional use or use contrary to the intended purpose may create a risk of injury or endanger the life of the user or a third party, or damage to equipment and other property.

1. GENERAL SAFETY INSTRUCTIONS AND WARNINGS



Read all instructions before using the device!

- This document contains important safety instructions and warnings for safe, correct and economical operation of the electrical equipment. Its compliance helps the user avoid risks, increase reliability and product life.
- In this document, the general term product is used in text parts such as: electrical equipment - any device used for the production, conversion, transmission, distribution or use of electricity.
- From the point of view of the purpose of using electricity, the concept of electrical equipment in the strict sense of the word will include the following categories:
 - household electric appliances,
 - information and communication equipment,
 - consumer electronics,
 - lighting equipment,
 - electrical and electronic tools,
 - toys and equipment for sporting and recreational purposes,
 - medical devices (aids),
 - monitoring and control devices,
 - vending machines.

1.1 General safety instructions

- Before commissioning the unit, we recommend that you carefully read the operating instructions and operate the equipment in accordance with the instructions!
- The safety instructions and warnings in this manual do not cover all the possible conditions and situations that may arise when using the device. The user must understand that a factor that can not be incorporated into any of the products is responsibility and caution. These factors must therefore be ensured by users/users who use and operate this device.
- Failure to follow the safety instructions and warnings is forbidden by the manufacturer for any damage to health or property!
- Make sure that the appliance is complete and shows no signs of damage before using the appliance for the first time. If the product is defective or if it has any visible damage, do not use the product.
- Keep the operating instructions as close to the device as possible throughout its service life. Always keep the operating instructions together with the appliance for future use and use by new users.
- Use the appliance only for the purpose for which it is intended and in the manner specified by the manufacturer.
- The appliance is intended for home and similar indoor use, with no special focus.
- It is not a professional device for commercial use.
- Do not change the technical parameters and features of the device by unauthorized modification or modification of any part of the device.
- The manufacturer is not responsible for damages caused during transportation, misuse, damage or destruction of the equipment due to adverse weather conditions.

1.2 Safety of the operating environment

- Do not use the device in an industrial environment or outside environment.
- Always keep the operating environment clean and well lit.
- Do not place the device on an unstable surface. Overriding or dropping the device may result in personal injury or damage to the device.
- Do not expose the unit to direct sunlight or excessive heat sources.
- Do not use an electric appliance in areas with flammable liquids, gases or dust. The appliance may be the source of scaling, which can result in the ignition of dust or vapors.

Features of the operating environment:

1. Ambient temperature: $+5 \div +40^{\circ} \text{C}$
2. Humidity: $5 \div 85\%$
3. Altitude: $\leq 2\,000 \text{ m}$
4. Occurrence of water: intermittent condensation of water or occurrence of water vapor
5. Occurrence of foreign bodies: amount and type of dust are not significant

Protection class: IP20

- Other characteristics of the operating environment (mechanical stress - shocks and vibrations, occurrence of plant, animals, weather effects) are negligible in terms of effect on the correct and safe use of electrical equipment.

1.3 Electrical safety

- Before connecting the appliance to the power supply for the first time, make sure that the voltage on the appliance label corresponds to that of the household electrical outlet.
- The electrical appliance is designed for mains supply 230 V ~. The electrical safety of the appliance is guaranteed only if it is properly connected to the electricity grid.
- Only use a power cord with a plug (mains lead) that came with the device and compatible with a wall outlet. Using another cable may result in fire or electric shock.
- Always connect an electrical appliance to an easily accessible power outlet. In the event of an operating fault, the appliance must be switched off as soon as possible and disconnected from mains supply.
- Do not pull the power cord / power cord by pulling on the cord/cord. Disconnect the power cord by pulling the plug behind the power cord / power cord plug.
- If you use an extension cord, check that the total rated (ampere) power of all devices connected to the extension cord does not exceed the maximum current rating of the extension cable.
- If you need to use an extension cord or power supply block, make sure that the extension cord or power pack is plugged into a power outlet, and not to another extension cord or power supply. Extension power cord or power supply block must be designed for grounded plugs and plugged into a grounded outlet.
- The power plug of the appliance must be compatible with the mains socket. Never use any adapters or modify the socket in any other way. Do not use inappropriate or damaged sockets.
- To avoid electrical shock, plug the power cables into properly grounded electrical outlets. If the device is equipped with a 3-pin power supply cord, do not use adapters that do not have a grounding element or remove the grounding element from the plug or adapter.

- Do not bend, crush or otherwise expose the power cord / power cord of the appliance to mechanical stress or external heat sources. Damage to the power cord may result in electric shock.
- If the power cord is damaged, disconnect the appliance from the mains and do not use it again. If the power cord / power cord is damaged, it must be replaced by the manufacturer, its service department, or a qualified person to avoid the risk of electric shock.
- Regularly check and maintain the electrical appliance as well as the power cable. Disconnect the power plug regularly and clean it if necessary. Pollution by dust or other substances may cause disruption of the insulating state and consequently fire.
- Do not expose the appliance to water or moisture. The ingress of water into the appliance increases the risk of electric shock. If the power cord is wet or the appliance gets water, disconnect it immediately from the mains. If the appliance is plugged into a mains socket and if possible, turn off the power supply before attempting to disconnect the power supply. If you are pulling wet wires from a live power source, be very careful.
- If the electrical equipment is installed (connecting) the protective covers are dismantled, the electrical parts must not be accessible to the user when the installation is finished.

1.4 Safety of persons

- This appliance is intended for use by persons without an electrotechnical qualification (layperson) according to the instructions specified by the manufacturer.
- Device operation includes activities such as switching on and off, user manipulation and setting of operating parameters, visual or auditory inspection of the equipment, and user cleaning and maintenance.
- This appliance can be used by children 8 years of age and older and persons with reduced physical, sensory or mental abilities or lack of experience and knowledge only when under the supervision or guidance of the responsible person have been instructed to use the appliance in a safe way and understand the potential hazards .
- Cleaning and user maintenance can be carried out by children 8 years of age and older only under the supervision of the responsible person.
- Children may not play with the appliance.
- Always keep the appliance out of reach of children during use and operation. Be sure to download the appliance even for a freely accessible power cord.
- Always be careful when operating the electric appliance. Do not use an electric appliance if you are overly tired, under the influence of medication or narcotic drugs that reduce attention and focus. Inattention during operation may result in serious injury.

1.5 Cleaning, maintenance and repairs

- Observe the normal user cleaning and maintenance of the appliance in the recommended way. Do not use solvents or harsh cleaners for cleaning. Pollution and visible stains from finger contact, respectively. The hands can be cleaned using detergent detergents specially designed to clean household appliances.
- If you do not use the appliance, clean it or disconnect the appliance from the power supply when the appliance is faulty.
- Electrical appliances that are cleaned after use and are not intended to be completely or partly immersed in water or other liquid, protect against the effects of dripping and / or splashing water and before immersion.
- Electric household appliances, like all other technical devices, are subject to the surrounding environment and natural wear. Since the legal framework of regular maintenance is not laid down for lay-in electrical household appliances, the manufacturer recommends that the user have the appliance checked and cleaned at least once a year by a specialist workshop.
- By doing so, it is possible to achieve safety, operational reliability and increased service life.
- Do not disassemble the electric appliance! The appliance works with a dangerous voltage. For this reason, always switch off the appliance and disconnect it from the mains supply during user maintenance. In the event of a fault, please have the repair serviced by an authorized service center.
- Before calling a service:
 1. Turn the appliance off and on to make sure the fault reappears.
 2. If the malfunction of the appliance still persists after these operations, call the nearest specialist service center.
- Never repair the electric appliance yourself!
- Unauthorized, unqualified and improper use of an electric appliance may result in electric shock or other serious injury.
- Only carry out the warranty or post-warranty repair of an electrical appliance to an authorized qualified person^(*).

^(*)Competent qualified expert: the sales department of the manufacturer or importer or the person qualified and authorized to carry out this type of activity with the ability to avoid all risks.

2. 2. Special Safety Instructions. Read carefully!

- Electrical equipment is designed and manufactured in such a way that ensure safe operation and use by persons without professional qualifications. Despite all the measures taken by the manufacturer to ensure safe use, handling and use, it carries with it some residual risks and associated potential hazards.
- The following symbols and their meanings have been used on the device and in the accompanying documentation to warn of possible hazards:



This symbol alerts users that the device is operating a dangerous electrical voltage. Do not remove protective covers on the device.

Failure to observe the safety instructions during use and operation of the device may result in:

Danger of electric shock! Danger of serious injury or life threatening!



This symbol alerts users that the following precautions can be avoided if the following precautions are observed when operating and operating the device:

Danger of serious injury or life threatening!

Danger of damage to equipment or other damage to property!



This symbol alerts users that the following precautions can be avoided if the following precautions are observed when operating and operating the device:

Danger of tearing or puncture of your fingers!



This symbol means that the product is made with a double insulation between hazardous live parts (parts with dangerous voltage from the mains) and parts that are accessible in normal use.

Transportation/Transfer

- When transporting and using, for example, of the transport cart, be careful when moving, to avoid overturning the device.
Only transport/transmit the device after thorough inspection of the space and routes, which must be unobstructed.
Never transfer the device while in operation. Do not carry the device while it is plugged into a wall outlet.

Warning!

- Some surfaces may become warm when operating the machine. Do not touch hot surfaces! Never transfer the appliance until it has cooled down to ambient temperature.
- Transfer the device firmly by both hands to the bottom edge of the base or fixed parts of the body.

- Make sure that your hands and equipment are not damp or slippery when carrying.
- Only persons who are competent and sufficiently physically fit to carry the device (in view of the size and weight of the device) can only be transported.
There is a risk of serious injury or life threatening!
There is a risk of damage to the device!

Expand/Packaging

- Unpack the equipment and accessories before putting it into service and remove all parts of packaging material and labels. Store the packaging in a safe place, especially out of the reach of children and unaccompanied persons, or dispose of them safely.
There is a risk of serious injury!
Risk of suffocation!

Check/Startup

- The appliance is designed for food preparation. Therefore, thoroughly clean all parts of the appliance before commissioning it, following the instructions in the „Commissioning“ section. „Cleaning and maintenance“.
- Never clean the appliance (its drive unit with electrical parts and controls) and the power cord with the plug in a way (under running water) that could cause the liquid to flow into the device.
- Clean these parts with a damp cloth only and wipe dry or let it dry.
- Only clean the appliance if it is switched off and disconnected from the mains.
- We recommend performing both initial and subsequent regular machine inspections.
- Never use the appliance if it is incomplete, damaged or damaged in any way during transportation or use. Do not use non-original and incomplete parts of the device and its accessories.
There is a risk of serious injury!
There is a risk of electric shock!

Location/Installation

- Only place the appliance on straight, firm and stable pads - kitchen work desks and furniture parts, suitable for the location of kitchen utensils.
- Always make sure that the place you want to place the device has enough space, mechanical strength and appropriate lighting.

Warning!

- Do not expose the device to:
 - direct sunlight, sources and equipment producing heat,
 - vibration and mechanical stress,
 - excessive dust,
 - water and excess moisture,
 - insect,
 - an aggressive external environment.
- Do not use or dispose of the appliance:
 - to unstable tables or parts of furniture,
 - on an uneven and dirty surface,
 - on the sealing edge of tables or parts of furniture,
 - in the vicinity of containers with water or other liquids.
- Do not cover the appliance in part. Do not place any objects on the device. Do not insert or allow the foreign bodies to enter the holes of the device covers.
- Do not cover the openings of the airflow covers. Air ventilation ensures reliable and safe operation of the device.
There is a risk of electric shock!
There is a danger of fire!

Warning!

- Place the device in a place where children can not reach freely.
- Prevent children from handling the device. The device may overwhelm children and cause serious injury.
- Mechanical damage (breakage or breakage of parts and covers) of the device can cause serious injury.
There is a risk of serious injury!
There is a risk of damage to equipment or other property damage!
- Do not place or use the appliance near water-containing containers. If the appliance falls into the water, do not remove it! First, pull the power cord plug out of the mains socket and then select the appliance from the water. In such cases, take the device for inspection to a specialist service to check that it is safe and working properly.
There is a risk of electric shock!
There is a risk of electrical short circuit!

Operation/Supervision

Warning!

- This device must only be used with original parts and accessories.
- Always make sure that the device is properly assembled and that none of its parts is damaged before using the appliance. Do not use incorrectly assembled and damaged devices.
- Always use the appliance with a properly fitted lid / container cover.
- Only fill the container (primary filling with the uncovered container) when the appliance is turned off. If you fill the foodstuff in the container during the operation of the appliance, do so only through the filling opening (the lid) at the age of the container.
- Always switch off and unplug the power cord from the wall outlet before replacing the accessory or accessory parts of the device, before installing and dismantling, and before cleaning and servicing.

There is a risk of serious injury!

- Always keep your device under control during use and operation!
- This device is not intended to be operated via a programmer, an external time switch or a remote control, as there is a risk of fire when the device is covered or incorrectly positioned.
- Do not switch the device on or off by plugging in or pulling out the power cord from the AC outlet.
- Always connect the appliance to mains power supply for normal use, then turn on the main power switch.
- When you have finished using the appliance, turn off the main switch and then pull the mains cord out of the mains socket.
- Do not use the device if the main power switch does not work.
- The device is under dangerous voltage when the power supply is connected.

There is a risk of serious injury!

- The device contains rotating parts with sharp edges - rotating knives.

Warning!

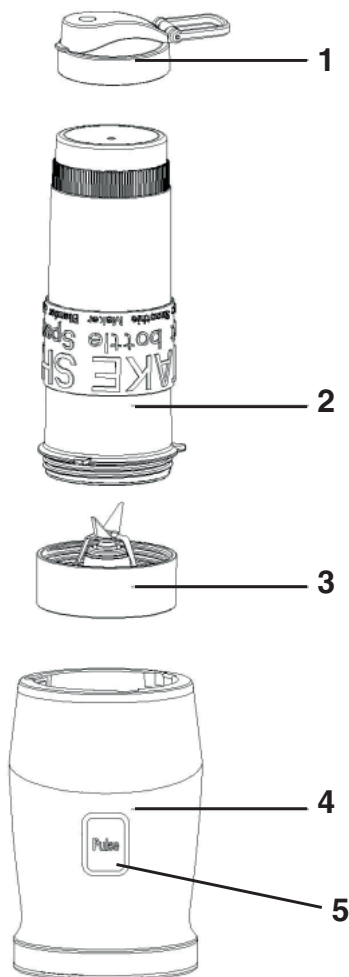
- Do not bend your fingers and do not place other objects in the work area - inside the container and the rotating parts when it is in operation.
- If the workspace needs to be handled (cleaning the rotating parts of the trapped food) - always only when the appliance is switched off, disconnected from the power supply and the rotating parts are completely stopped, use only the specified accessories of the appliance or a suitable item, plastic knife, plastic spoon / squeegee. Do not use metal objects.

Warning!

- After switching off the drive, the drive of the rotating parts will recharge for a certain amount of time. Always wait until the rotating parts stop completely before handling the equipment or the container's workspace.
There is a risk of serious injury!
There is a risk of tearing / puncture of the fingers!
- Take care during use and operation of the appliance so that you do not come into contact with the rotating parts with loose hair, free ornaments or loose clothing.
There is a risk of serious injury!
- Do not connect the power cord to bundles. The power cord must remain accessible for safe disconnection of the appliance from the power supply.
- Do not let the cord hang loose and do not allow it to be freely accessible and reachable by children.
- Never leave your device freely accessible and do not leave it with a loose cord. Children could download the device for a network cord.
- Do not store the appliance with a wrapped cord around your body. Unfold the network cord „in the way it was put in the original packaging by the manufacturer.
There is a risk of serious injury!
- Never overload the equipment beyond the limits specified by the technical specifications!
- Do not switch on the appliance unless the container is filled with sufficient fluid / food.
- Do not exceed the maximum content/volume of processed foods indicated on the containers or recommended in the food process information in this manual.
- Allow the food to cool before processing the heat treated food. Do not process food with a temperature higher than 60C.
- Before processing deep-frozen foods, allow food to thaw first to the temperature at which food can be divided into smaller (recommended) parts. Do not process excessive pieces of deep-frozen food.
- Always divide the device to the recommended operating intervals and set the operating mode (continuous operation/breakthrough time) and follow these instructions.

- If you notice any unusual occurrences (vibrations, sounds, smells, smoke, etc.) while using the device, switch off the device immediately and unplug it from the mains. Have the appliance checked by a specialist workshop.
There is a risk of serious injury!
There is a risk of damage to equipment or other property damage!
- Only install and disassemble the device and its parts when the device is switched off and disconnected from the mains.
There is a risk of serious injury!
- Always clean the equipment and accessories immediately after use and dispose of all residues of processed food.
- Store the device in an upright position - especially its drive unit.
- If any safety component/component (mechanical, electrical/electronic) is part of the device, never disable this part / component! If the safety component/component is damaged or not working, do not use the appliance!
- Do not use the safety parts / components for switching on or off. switch off the device.
- The machine's operating time is 1 minutes. After 1 minutes, stop operation for at least 2 minutes.
- Never underestimate the potential hazards and take extreme caution !!!

Description of parts



- 1. closable travel cover for a container with a drinking opening
- 2. blender jar
- 3. blender blades
- 4. base with engine
- 5. power button

Assembly of accessories and mounting on the motor unit

Follow the steps below to assemble the appliance for food processing.

1. Place the base on a dry, level and firm surface. Do not plug in the power cord before assembling the device completely!
2. Remove the container and place the food to be mixed in the container. Always insert only 1 cup (measuring cup) of food at a time. Before processing, cut larger pieces of food into approx. 2.5 cm cubes. If necessary, add an adequate amount of water.

Do not process more than 1 cup (approx. Half of the used container) of food at a time!

Container
container
with mixing
knives

Suitable for
mixing smoothies, juices,
baby food or any creamy
dishes

Max. filling capacity
570 ml

3. Place the knives firmly on the filled container by turning them. Carefully point the blades inside the container to avoid injury.

Caution!

Before using the appliance, always make sure that the knives are firmly screwed on so that the container is sealed.

The knives are very sharp. Always handle them carefully.

Do not touch the blades with your hands, as this may cause injury.

4. Plug the power cord into an electrical socket.
5. Place the assembled knife mixing bowl assembly on the motor base by placing it with the knives on top of the base so that the protrusions on the container fit into the holes in the motor base, and press it against the base and turn it to the right.
6. Switch on the blender by pressing and holding button 5. To stop mixing, stop pressing button 5. The appliance switches off. To mix in pulse mode, turn the power button 5 on and off cyclically.

Notes

- The blender will not work if the 3 protrusions on the blade assembly are not properly seated in the 3 holes on the motor base.
- To stop the blender, stop pressing the on button 1. Then turn the bowl to the left and remove it from the base.
- When you have finished working, unplug the power cord from the electrical outlet. Turn the mixing bowl with the knives upwards, hold the bowl firmly and unscrew the knife attachment from the bowl with the other hand.
- If you want to take the prepared drink for the trip, screw the supplied travel cover (with a closable stopper) onto the drink container, through which you can drink the drink while driving without risk of spillage. After drinking, simply close the stopper by pushing.
Do not fill the container with hot water when using the travel cover.

IMPORTANT NOTICES!

- Do not fill containers with hot liquids or carbonated drinks. Releasing the pressurized container can cause it to rupture and injure.
- Do not process hot food or boiling liquids. Allow to cool to at least 60 °C before mixing.
- Do not operate the device with an empty container.
- Do not use the device continuously for more than 1 minute. The recommended time of use is 1 minute, followed by a break of about 3 minutes.
- Add a little water to the mixed food if necessary.
- Peel the fruit/vegetables, remove the stones and kernels and cut them into smaller pieces before placing them in the container.
Before placing in the container, you must pre-cut hard fruits and vegetables into pieces measuring about 1 cm. Even softer types of food should be pre-cut into smaller pieces before mixing. This will increase the mixing efficiency. If you are preparing a multi-ingredient dish that requires mixing of the individual ingredients at different performances, mix the individual ingredients of the dish separately.
- Do not overfill containers to prevent damage.
- For optimal results, it is recommended not to fill more than half the capacity of the container and pieces of solid food should not exceed about 15 mm.
- To slice the fruit/vegetables, place the fruit/vegetables in a container in the amount of half a cup. Mix continuously until you reach the desired consistency.
- To mix fruit/vegetables, add half a cup of water to half a cup of fruit/vegetables in the container to the hard fruit/vegetables. For soft fruits / vegetables, add about a quarter cup of water to half a cup of fruit/vegetables to the container.
- Avoid premixing. Premixing produces a slurry.
- Do not overfill the mixing bowl.
- Fill the container with liquids first, then solids (unless prescribed otherwise).
- When mixing drinks, you can put all the ingredients in the container at the same time.
- Only mix ice when there is an adequate amount of liquid in the container.
- If mixing stops during operation, switch off the appliance, remove the container, fold down the knife handpiece and allow the motor base to cool down.
- Wipe off food residue from the container and knives with a rubber spatula or a stream of water.

Preparation times and speed settings

Ingredient	Mixing time
fruits, vegetables cut into smaller pieces	30 s
smoothies and cocktails	40 s
soups	30 s
baby food, sauces	40 s

The processing time of the ingredients depends on how thoroughly you want to mix the inserted food.

Cleaning and maintenance

When mixing is complete, unplug the appliance. Wash the container, the cover and the knives in warm water with detergent, wipe them off and dry them carefully. Do not leave parts wet.

Do not use solvents or harsh cleaners to clean any elements.

Wash the parts immediately after use to prevent food residues from drying on them. Wash the knives with a dish brush. Do not immerse them with your hands under water, as they are very sharp.

Do not wash the knives in the dishwasher. There is a seal on the knife assembly. Do not attempt to disassemble it. This seal can be damaged by heat in the dishwasher.

Never immerse the motor base in water or any other liquid! Wipe the base with the motor and the power cord with a dry cloth. The engine is lubricated with durable Vaseline. Does not require lubrication.

Never store containers with caps on. The cover prevents the ventilation of odors from the containers and thorough drying.

Warning!

The knives are very sharp. Handle them carefully. Keep them out of the reach of children.

Technical specifications

Power supply:	220 - 240 V~ 50/60 Hz
Protection class:	II (protection against electric shock is provided by double insulation)
Power consumption:	700 W
Container capacity:	570 ml
Dimensions (W x H x D):	11 x 11 x 35,5 cm (with container)
Weight:	1.46 kg (motor base with container)
Speed:	23 000 ot/min \pm 15 %
Continuous operation time (KB):	max. 1 min.
Noise:	92 dB (A)

The declared noise emission value of this appliance is 92 dB (A), which represents the sound power level A with respect to the reference sound power of 1 pW.

We reserve the right to make changes!

Producer:

ORAVA retail 1, a.s.
Seberínho 2
821 03 Bratislava
Slovenská republika

Importer:

ORAVA retail 1, a.s.
Seberínho 2
821 03 Bratislava
Slovenská republika

ORAVA distribution CZ, s.r.o.
Ostravská 494
739 25 Sviadnov
Česká republika

DISPOSAL OF USED ELECTRICAL AND ELECTRONIC EQUIPMENT



The symbol on the product or on its packaging indicates that this product does not belong to household waste. It is necessary to take it to a collection point for electrical recycling and electronic equipment.

By ensuring proper disposal of this product, you will help prevent negative consequences to the environment and human health that would otherwise be caused by inappropriate disposal of this product. For more detailed information about recycling of this product, please contact your local authority, your household waste disposal service or the shop where you purchased the product.



This product meets all the essential requirements of the EU directives that apply to it.