

Meat grinder

orava

MM-903

Instruction manual

EN



CE

MM-903

Intended use of the device

The equipment is intended solely for grinding (fine chopping) of meat cleaned of bones, cartilage and tendons, pulp and/or similar food and for making sausages, to the extent determined by the technical and operational parameters and functions of the equipment, safety and user instructions and environmental impacts of the operating environment.

ORAVA electrical appliances are manufactured according to the state of the art and recognized safety rules. Nevertheless, improper and unprofessional use or use that is not intended for use may result in injury or danger to the life of the user or third party, damage to the device and other material values.

1. GENERAL SAFETY INSTRUCTIONS AND WARNINGS

- This document contains important safety instructions and warnings for safe, correct and economical operation of the electrical equipment. Its compliance helps the user avoid risks, increase reliability and product life.
- In this document, the general term product is used in text parts such as: electrical equipment - any device used for the production, conversion, transmission, distribution or use of electricity.
- From the point of view of the purpose of using electricity, the concept of electrical equipment in the strict sense of the word will include the following categories:
 - household electric appliances,
 - information and communication equipment,
 - consumer electronics,
 - lighting equipment,
 - electrical and electronic tools,
 - toys and equipment for sporting and recreational purposes,
 - medical devices (aids),
 - monitoring and control devices,
 - vending machines.

1.1 General safety instructions

- Before operating the unit, we recommend that you carefully read the instruction manual and operate the equipment in accordance with the instructions!
- The safety instructions and warnings in this manual do not cover all the possible conditions and situations that may arise when using the device. The user must understand that a factor that cannot be incorporated into any of the products is personal responsibility and caution. These factors must therefore be ensured by users serving this device.
- Failure to follow the safety instructions and warnings is forbidden by the manufacturer for any damage to health or property!
- Keep the instruction manual as close to the device as possible throughout its service life. Always keep the instruction manual together with the appliance for future use and use by new users.
- Use the appliance only for the intended purpose and in the manner specified by the manufacturer.
- The appliance is intended for home and similar indoor use without special focus.

- This appliance is intended, in addition to domestic use, for the following uses:
 - in shops, offices and other similar work environments;
 - in economic buildings;
 - in hotels, motels and other residential environments;
 - in bed and breakfast establishments.
- It is not a professional device for commercial use.
- Do not change the technical parameters and features of the device by unauthorized modification or modification of any part of the device.
- The manufacturer is not responsible for damages caused during transportation, misuse, damage or destruction of the equipment due to adverse weather conditions.

1.2 Safety of the operating environment

- Do not use the device in an industrial environment or outside environment!
- Do not expose the appliance to:
 - sources of excessive heat or open flame,
 - dripping or splashing water,
 - vibration and excessive mechanical stress,
 - insects, animals and plants,
 - aggressive and chemical substances.
- The operating environment of the device must always be in accordance with the basic characteristics set out.
- Features of the operating environment:
 1. Ambient temperature: $+5 \div +40$ ° C
 2. Humidity: $5 \div 85\%$
 3. Altitude: $\leq 2\,000$ m
 4. Occurrence of water: intermittent condensation of water or occurrence of water vapor
 5. Occurrence of foreign bodies: quantity and type of dust are insignificant
 6. Protection degree: min. IP20 (device protected from touching dangerous parts by hand and non-waterproof)
- This degree of protection is not indicated on the product and on the technical parameters in the operating instructions.
- If the protection class of the product is different from IPX0, this information is then displayed on the label of the appliance or in the technical data of the operating instructions.
- Other characteristics of the domestic operating environment (mechanical stress - vibrations and vibrations, occurrence of plant, animals, weather effects ...) are negligible in terms of effect on the correct and safe use of electrical equipment.

1.3 Electrical safety

- Before connecting the appliance to the power supply for the first time, make sure that the voltage on the appliance label corresponds to that of the household electrical outlet.
- The electric appliance is designed to power from 1/N/PE ~ 230 V 50 Hz.
- The electrical safety of the appliance is guaranteed only if it is properly connected to the mains.
- Electrical protection class I equipment is equipped with a protection against electric shock by means of protective earthing of inanimate parts, which can become dangerous when the device is malfunctioning. Always connect such devices to properly installed mains sockets that are equipped with earthing conductors and have a properly grounded earthing conductor.
All electrical equipment is equipped with a three-wire power supply.
- Class II electrical equipment is protected against electric shock by double insulation or by enhanced insulation of hazardous live electrical parts. Device of protection class II it must not be equipped with means to connect protective earthing.
All electrical equipment is equipped with two-wire power supply.
- Class III electrical equipment is a device that is powered by a small safe voltage source (battery or accumulator) and does not present any danger to the user from electrical shock.
- In order to provide increased safety against the risk of electric shock due to the use of electrical appliances by laypersons, it is recommended to install the power supply circuit for sockets with a rated current not exceeding 20 A RCD with a rated operating current not exceeding 30 mA.
To ensure the safety and correctness of the electrical installation, consult a qualified electrician.
- Only use a power cord with a plug (mains lead) supplied with the device and compatible with a wall socket. Using another cable may result in fire or electric shock.
- Always connect an electrical appliance to an easily accessible mains socket. In the event of an operating fault, the appliance must be switched off as soon as possible and disconnected from mains supply.
- The power cord and mains plug must always be easily accessible for safe disconnection of the electrical appliance from the power supply.
- Do not pull off the power cord by pulling the cable. Disconnect the power cord by pulling the plug behind the power cord plug.
- If you use an extension cord, make sure that the total rated power of all devices connected to the extension cord does not exceed the max. current load on the extension cable.
- If you need to use an extension cord or power supply block, make sure that the extension cord or power pack is plugged into a power socket, and not to another extension cord or power supply. The extension power cord or power supply block must be designed for grounded electrical plugs and connected to a properly grounded electrical socket.
- The power plug of the appliance must be compatible with the mains socket. Never use any adapters or modify the socket in any other way. Do not use inappropriate or damaged drawers!
- To avoid electrical shock, plug the power cables into properly grounded electrical sockets. If the device is equipped with a 3-pole plug, do not use adapters that do not have a grounding element or remove the grounding element from the plug or adapter.

- Do not bend, crush or otherwise expose the power cord of the appliance to mechanical stress or external heat sources. Damage to the power cord may result in electric shock.
- When the power cord is damaged, disconnect the appliance from the mains and do not use it again.
- If the power cord is damaged, it must be replaced by the manufacturer, its service department or a similarly qualified person to avoid the risk of electric shock.
- Regularly check and maintain the electrical appliance as well as the power cord and power socket. Disconnect the power plug regularly and clean it if necessary. Pollution by dust or other substances may cause disruption of the insulating state and consequently fire.
- Do not expose the appliance to water or moisture. The ingress of water into the appliance increases the risk of electric shock.
If the power cord is wet or the water has penetrated the water, disconnect it immediately from the mains. If the appliance is plugged into a mains socket and if possible, turn off the power circuit before attempting unplug the power. If you are pulling wet wires from a live power source, be very careful.
- If the electrical equipment is installed (connecting) the protective covers are dismantled, the electrical parts must not be accessible to the user when the installation is finished.

1.4 Safety of persons

- This appliance is intended for use and operation by persons without electrotechnical qualification - lay people, according to the instructions specified by the manufacturer.
- Device operation includes activities such as switching on and off, user manipulation and setting of operating parameters, visual or auditory inspection of the equipment, and user cleaning and maintenance.
- This appliance can be used by children under the age of 8 and persons with reduced physical, sensory or mental capabilities or lack of experience or knowledge when supervised or instructed to use the appliance safely and understand the dangers involved.
- Children may not play with the appliance.
- Cleaning and maintenance for users may not be performed by children unattended.
- Always keep the appliance out of reach of children during use and operation. Be sure to download the appliance even for a freely accessible power cord.
- Always be careful when operating the electric appliance! Do not use an electric appliance if you are overly tired, under the influence of medication or narcotic drugs that reduce attention and focus.
- Inattention during operation may result in serious injury.

1.5 Cleaning, maintenance and repairs

- Observe the normal user cleaning and maintenance of the appliance in the recommended way. Do not use solvents or harsh cleaners for cleaning. Pollution and visible stains from finger contact, respectively. The hands can be cleaned using detergent detergents specially designed to clean household appliances.
- If you do not use the appliance, clean it or disconnect the appliance from the power supply when the appliance is faulty.
- Electrical appliances that are cleaned after use and are not intended to be completely or partly immersed in water or other liquid, protect against the effects of dripping and / or splashing water and before immersion.
- Electric household appliances, like all other technical devices, are subject to the surrounding environment and natural wear. Since the legal framework of regular maintenance is not laid down for lay-in electrical household appliances, the manufacturer recommends that the user have the appliance checked and cleaned at least once a year by a specialist workshop.
- By doing so, it is possible to achieve safety, operational reliability and increased service life.
- Do not disassemble the electric appliance! The appliance works with a dangerous voltage. For this reason, always switch off the appliance and disconnect it from the mains supply during user maintenance. In the event of a fault, please have the repair serviced by an authorized service center.
- Before calling a service:
 1. Turn the appliance off and on to make sure the fault reappears.
 2. If the malfunction of the appliance still persists after these operations, call the nearest specialist service center.
- Never repair the electric appliance yourself!
- Unauthorized, unqualified and improper use of an electric appliance may result in electric shock or other serious injury.
- Only carry out the warranty or post-warranty repair of an electrical appliance to an authorized qualified person (*).

(*) Competent qualified expert: the sales department of the manufacturer or importer or the person qualified and authorized to carry out this type of activity with the ability to avoid all risks.

Special safety instructions.

Read carefully!

The electrical equipment is designed and manufactured in such a way as to allow safe operation and use by persons without professional qualifications. Despite all the precautions that have been taken by the manufacturer for safe use, operation and use carry some residual risks and associated hazards.

The following symbols and their meanings have been used on the device and in the accompanying documentation to warn of potential hazards:



This symbol warns users that the device is working with hazardous electrical voltage. Do not remove protective covers on the device. Failure to follow the safety instructions for use and operation of the device may result in:
Risk of electric shock!
Risk of serious injury or death!



This symbol warns users that there is a risk of: - serious injury or danger to life if the safety and operating instructions are not followed!
Risk of equipment damage or other property damage!



This symbol indicates that the product is made with double insulation between hazardous live parts (power supply dangerous parts) and parts that are accessible under normal use.

Transportation/Transfer

- When moving and using, to avoid tipping the machine.
- Only transport/transfer the equipment after thorough inspection of the area and route, which must be free of obstacles.
- Never carry the machine while it is in operation. Do not carry the device while it is connected to a power outlet.

Warning!

- Some surfaces may become hot during operation. Do not touch heated surfaces. Never carry the appliance until it has cooled down sufficiently to ambient temperature.
- Carry the device firmly with both hands at the bottom edge of the base or solid parts of the body.
- Make sure your hands and equipment are not wet or slippery when carrying them.
- To maintain safety (with regard to the dimensions and weight of the device), the device may only be carried by qualified and physically fit persons.
There is a risk of serious injury!
There is a risk of damage to the equipment!

Unpacking/Packaging

- Unpack the equipment and accessories before putting them into service and remove any parts of the packaging materials and labels. Store packaging materials in a safe place, especially out of the reach of children and incapacitated persons or dispose of them safely.
There is a risk of serious injury!
There is a danger of suffocation!

Inspection/Commissioning

- The device is food preparation. Therefore, thoroughly clean all parts of the unit before commissioning, following the instructions in the „Commissioning“ section. „Cleaning and maintenance“.
- Never clean the device (its drive unit with electrical parts and controls) and the power cord with a plug in a manner that could cause liquid to flow into the machine.
Only clean these parts with a damp cloth and wipe dry or allow to dry.
- Clean the machine only when it is turned off and unplugged from the wall outlet.
- We recommend that you perform both initial and follow-up periodic inspections of the equipment.
- Never use the appliance if it is incomplete, damaged, or any part of it has been damaged during transport or use.
- Do not use non-original and incomplete equipment and accessories.
There is a risk of serious injury!
There is a risk of electric shock!

Location/Installation

- Only place the appliance on flat, firm and stable mats - kitchen worktops and furniture parts suitable for kitchen appliances.
- Always make sure that the space where you want to place the device has sufficient space, mechanical strength and suitable lighting.

Warning!

- Do not use or place the device:
 - on unstable tables or parts of furniture
 - uneven and dirty surface
 - on the tight edge of tables or furniture parts
 - near containers with water or other liquids.
- Do not cover the device even partially. Do not place any objects on the device. Do not insert or allow foreign bodies to enter the enclosure openings.
- Do not block the air vents openings. Air ventilation ensures reliable and safe operation of the device.
There is a risk of electric shock!
There is a risk of fire!

Warning!

- Place the machine in a place where children cannot reach it freely.
- Keep children away from the machine. The device may fall over children and cause serious injury.
- Mechanical damage (breakage of parts and covers) of the machine can cause serious injury.
There is a risk of serious injury!
There is a risk of damage to the equipment or other material damage!
- Do not place or use the equipment near containers containing water. Do not remove the device if it falls into the water. First, unplug the power cord from the wall outlet and then remove it from the water. In such cases, take the equipment to a specialist garage to check that it is safe and functioning properly.
There is a risk of electric shock!
There is a risk of electric short circuit!

Operation/Supervision

Caution!

- This equipment must only be used with original parts and accessories.
- Before using the equipment, always make sure that the equipment is properly assembled and none of its parts are damaged. Do not use improperly assembled and damaged equipment.
- Always use the appliance with the food funnel in place.
- Fill and handle food only using the supplied pressure roller accessory.
- Always switch off the power and unplug the power cord from the wall outlet before replacing accessories or accessible parts of the equipment, before installing and removing and before cleaning and maintenance.
There is a risk of serious injury!
- Always keep the device under supervision during use and operation!
- This equipment is not intended to be operated by a programmer, an external timer or remote control, as there is a risk of fire if the equipment is covered or improperly located.
- If you leave the unit unattended, always unplug it from the wall outlet.
- Before each connection of the equipment to the mains, make sure that the control knob (main switch) is in the „0“ (Off) position.
- Do not turn the power on or off by plugging in or unplugging the power cord from the wall outlet.
- Always connect the machine to a power outlet in the normal use, then turn on the main power switch.
- After use, turn off the main power switch and then unplug the power cord.
- Do not use the machine if the main power switch does not work.
- The unit is at dangerous voltage when the AC power is connected.
There is a risk of serious injury
- The machine includes rotating sharp-edged parts - a rotating grinding snake and a chopping knife.

Warning!

- Do not slide your fingers or insert other objects into the work area - the inside of the machine and the rotating parts while the machine is operating.
- If you need to work in the work area (clean the rotating parts from the caught food) - but only when the machine is turned off, disconnected from the power supply and the rotating parts have come to a complete stop, use only the specified equipment accessories or a suitable object, eg. plastic knife, plastic cup/spatula. Do not use metal objects.

Warning!

- After turning off the machine, the drive of the rotating parts is still running for some time. Always wait until the rotating parts have come to a complete stop before handling the equipment. There is a risk of serious injury!
- Be careful when using and operating the equipment to avoid contact with rotating parts by hair, loose decorative chains, or loose clothing. There is a risk of serious injury!
- Do not bundle the power cord. The power cord must remain accessible for safe disconnection of the equipment from the mains.
- Do not let the power cord hang freely and allow it to be freely accessible and reachable by children.
- Never leave the appliance open and do not store it with a loose power cord. Children could overturn the device by pulling the power cord.
- Do not store the device with the cord wrapped around its body. Put the power cord in the way it was folded in its original packaging from the manufacturer.
- Never overload the equipment beyond the limits specified in the technical data!
- Do not switch on the appliance until the food is filled with sufficient food.
- Do not exceed the maximum content/volume of processed foods recommended in the food processing information in this manual.
- Allow food to cool before processing cooked foods. Do not process food above 60 ° C.
- Before processing deep-frozen foods, allow the food to defrost to a temperature at which the food can be divided into smaller (recommended) parts. Do not process excess pieces of frozen food.
- Always divide the operation mode (continuous operation/operation time and pause time) into the recommended work intervals and follow the instructions.
- If you notice any abnormalities (vibration, noise, smell, smoke, etc.) while using your device, turn off the power and unplug it immediately. Have the device checked by a specialist.

There is a risk of serious injury!

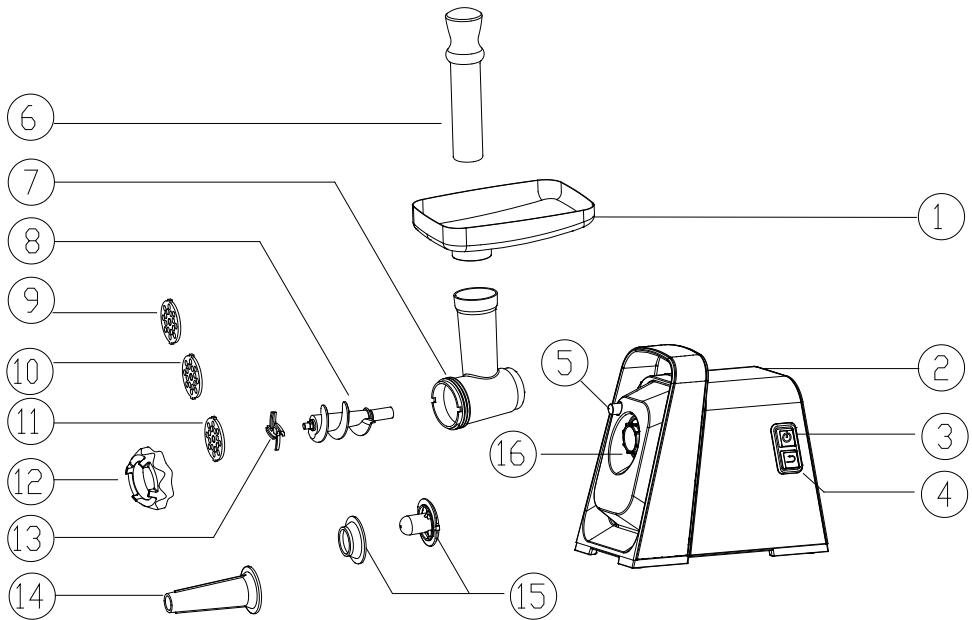
There is a risk of damage to the equipment or other material damage!



- Only install and remove the equipment, clean it, or handle any parts of it if the equipment is switched off and unplugged.

There is a risk of serious injury!

- Always clean the equipment and accessories thoroughly immediately after use and remove any food residues.
- Store the machine in an upright position - especially its drive unit.
- If any safety part/component (mechanical, electrical/electronic) is part of the equipment, never disassemble this part/component! If the safety part/component is damaged or not working, do not use the device!
- Do not use safety parts/components to switch on/off..
- Never underestimate possible hazards and be careful!

Description of parts



- 1** Funnel (hopper)
- 2** Grinder body with motor
- 3** Button  (on/off)
- 4** Button  (reverse engine operation)
- 5** Grinding mechanism lock button
- 6** Pusher roller
- 7** Spiral cavity with neck
- 8** Spiral
- 9** Fine grinding disc (3 mm holes)
- 10** Medium grinding disc (5 mm holes)
- 11** Coarse grinding disc (7 mm holes)
- 12** Outer screw
- 13** Knife
- 14** Sausage Tube
- 15** Kebbe discs
- 16** Neck opening

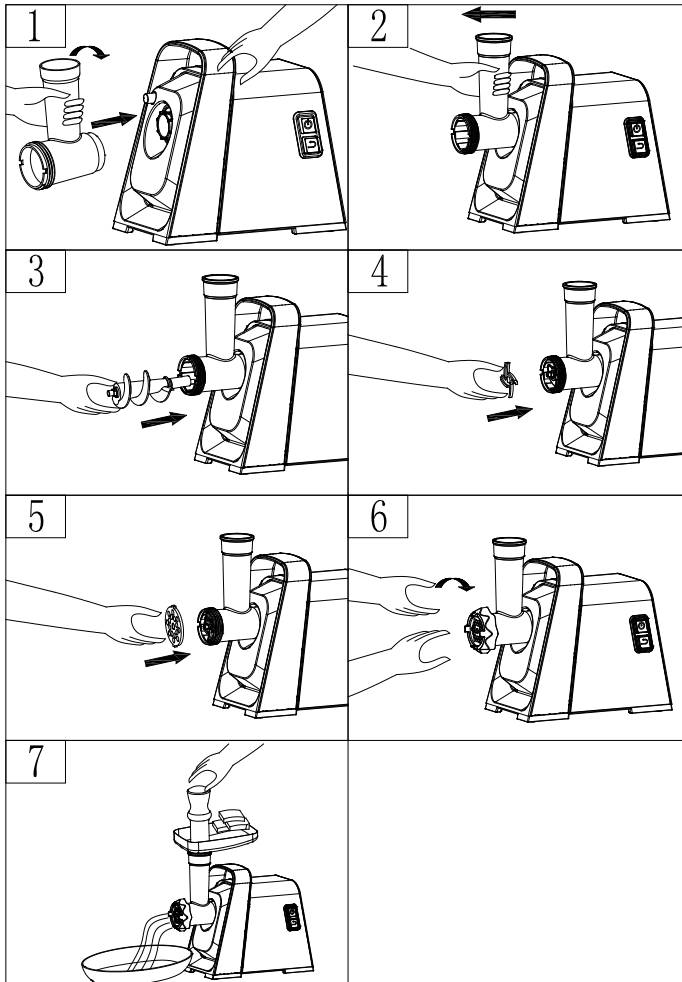
Preparation before use

Do not connect the device to the mains during preparation.

Unpack the device and remove all packing material. To remove any dirt from the device that may have formed during the packaging process, clean the inside, knives and cover with a dry, lint-free cloth. When cleaning the inside, be careful not to injure yourself with sharp knives. (See „Cleaning and Maintenance“ in this manual.)

Wash the accessories in warm water. Do not immerse the body of the device in water! Clean the surface with a cloth dampened in water.

Dry all parts thoroughly.




Assembling accessories and attaching to motor unit

Before assembling the device, unplug the appliance

- 1 As shown on the picture, for the spiral cavity with the neck (7) to the neck opening (16) by turning it slightly to the right (picture 1) and, after fitting, turn it slightly back to the left (picture 2) to the vertical position.
- 2 Fit the spiral (8), knife (13) (picture 4) and desired disc according to the required grinding thickness (9,10 or 11)(picture 5) to the spiral cavity (picture 3) Follow the sequence: Insert the spiral (8) first, then the knife (13) and finally the disc. The cutting edges of the knife must always face the hole disc.
- 3 Screw the outer screw (12) all the way in (picture 6) and then release by approximately 1/4 turn to allow the spiral to rotate freely.
- 4 Finally, place the funnel (1) on the filling part of the spiral cavity (7).
- 5 When grinding, press the meat into the funnel (1) with the pressure roller (6) (picture 7).

Operation


Grinding meat

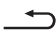
- 1 Place the grinder on a flat and solid surface (table, sink) and place a suitably large container underneath of the ground food outlet.
- 2 Turn on the device with button  (3). The device is put into operation.
- 3 Put the middle pieces of meat (or vegetables, etc.) in the funnel and press them to the bottom using the pressure roller (6) (picture 7).

Notifications!

- Never push food with your fingers. There is a risk of injury! Use the pressure roller (6).
- Overfilling does not speed up the grinding process. There is a risk of the device overheating.
- Do not use the device continuously for a long time (max. approx. 10 minutes). It can overheat.
- The device is equipped with a thermal fuse that blocks the motor when it overheats. In this case, further use will not be possible until it has cooled down in approx. 30 minutes. If longer operation is required, stop using the appliance, always let the engine cool down for approx. 30 minutes and then continue working.
- Allow frozen food to thaw properly before grinding. Cut the meat into 2.5 cm wide strips.
- Using the pressure roller, lightly push the food, only one piece at a time. Do not press hard - you could damage the grinder.
- Before grinding, remove unnecessary tendons and membranes from the meat. This will avoid clogging the grinding disc.

Reverse gear

If the appliance stops or becomes clogged during use, switch it off by pressing button  (3).

Then press button  (4) to select the reverse (reverse) operation of the motor, which will switch on the appliance in reverse operation and the clogged food will start to be released. Then switch off the appliance, unplug it and remove any clogged food.


Preparing kebbe

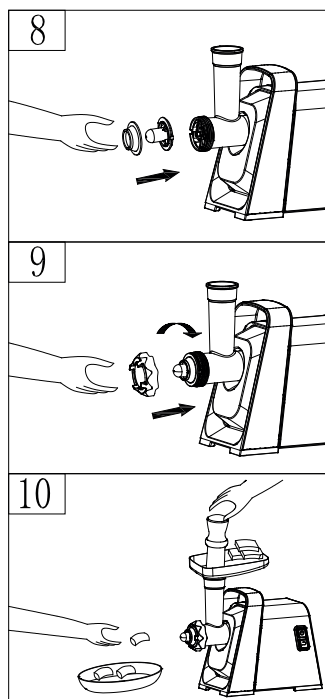
Kebbe is a traditional food from the Middle East: croquettes made of frozen or fresh lamb and wheat bulgur with minced meat stuffing.

Assembly of kebbe preparation equipment

- 1 Unscrew the outer screw (12) and insert the spiral (8), the kebbe discs (15) into the spiral cavity (7) (picture 8).
Follow the order: Insert the spiral (8) first, then the kebbe discs (15).
- 2 Screw the outer screw (12) back completely as far as it will go and then loosen it by approx. 1/4 turn so that the rotation of the spiral is free (picture. 9).
- 3 Finally, place the funnel (1) on the filling part of the spiral cavity (7).

Príprava kebbe

- 1 Place the grinder on a flat and firm surface (table, sink) and place a suitably large container underneath the ground food outlet.
- 2 Switch on the device with button  (3).
- 3 Put the prepared mixture in the funnel and push it to the bottom using the pressure roller (6) (picture 10).



Kebbe recipe

Outer layer

500 grams lamb or fat-free meat, striped
500 g of wheat bulgur, washed
1 small onion, finely chopped

Important!

Use the bulgur wheat right after you wash it. If you let it dry, it can increase the load on the meat grinder, which can cause damage to it.

- 1 Use a fine disc to alternate the batch of meat and wheat.
- 2 Mix. Then mix twice more.
- 3 Mix the onion into the mixture.
- 4 Use the kebbe extension to push it over.

Stuffing

400 g of lamb, sliced
15 ml of oil (1 half of a glass)
2 medium-sized onions, finely sliced
5 - 10 ml (1 - 2 teas.)
Ground new spices
15 ml (1 half of the ski) smooth flour
salt and pepper

- 1 Use a fine disc to grind the lamb.
- 2 Fry the onion until golden brown.
Add lamb.
- 3 Add the remaining ingredients and cook for 1-2 minutes.
- 4 Remove any excess fat and allow to cool.

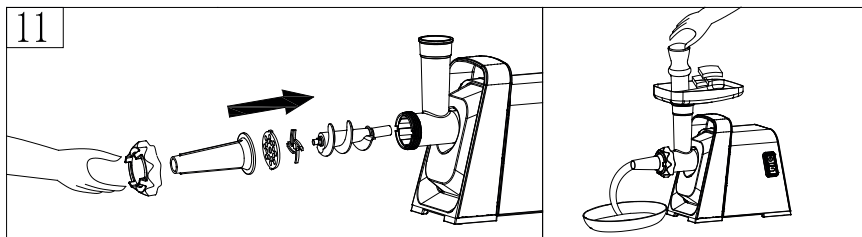
Completion

- 1 Push the kebbe mixture onto the dough.
- 2 Cut to 8 cm in length.
- 3 Close the tube by pressing one of its ends.
Push a mixture (not too much) to the other end, then close it.
- 4 Fry in hot (190°) oil for about 6 minutes or until golden brown.


Filling sausages

Assembly of equipment for filling sausages

- 1 Unscrew the outer screw (12) and insert the spiral (8), the disc (11) and finally the sausage filling tube (14) into the spiral cavity (7) (fig. 11).
Follow the order: First insert the spiral (8), the disc and finally the sausage filling tube (14).
- 2 Screw the outer screw (12) back completely as far as it will go and then loosen it by approx. 1/4 turn so that the spiral rotates freely.
- 3 Finally, place the funnel (1) on the filling part of the spiral cavity (7).



Filling sausages

- 1 Place the grinder on a flat and firm surface (table, sink) and slide the casing or artificial replacement onto the end of the sausage tube (14).
- 2 Switch on the device with button  (3).
- 3 Insert the finished sausage mixture into the funnel and push it in with the push roller (6). Hold the casing by hand to ensure that the filling is even to your requirements.

Recipe for making pork sausages

2.5 kg pork belly

2.5 kg pork shoulder

5 garlic cloves

- ground black pepper

- salt

- ground red pepper

- ground cumin

- pork intestines

1 Grind the pork side and shoulders on the large holes.

2 Add extruded garlic, pepper, salt, cumin, ground paprika (to taste).

3 Prepare the intestines (rinse with cold water).

4 Put the sausage tube on the robot (16). Pull the intestine on the tube and fill it.

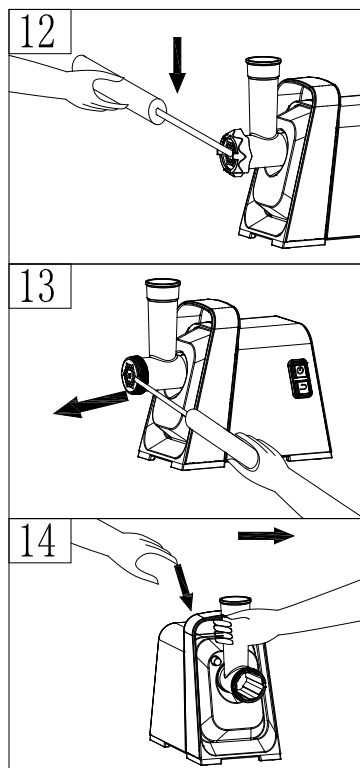
5 Every 15 - 20 cm filled gut turn three to four times. Once in one direction, once in the opposite direction.

6 After filling, let it cool for at least two days.

7 We will smoke, or bake the sausages.

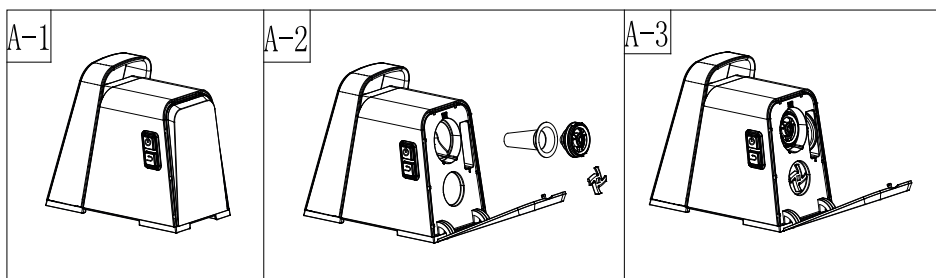
Dismantling the equipment and removing accessories from the engine unit

- 1 Unscrew the outer screw (12) and remove the spiral (8), the knife (13), the inserted disc /or also the sausage filling tube (14) or the kebbe discs (15)/ from the spiral cavity (7). If the screw (12) cannot be loosened by hand, unscrew it with a suitable tool (picture 12). If the used disc cannot be removed by hand, remove it with a suitable tool (picture 13).
- 2 Remove the funnel (1) and pressure roller (6) from the filling part of the spiral cavity (7).
- 3 As shown on picture (picture 14), press the locking button (5) with one hand and remove the spiral cavity with the neck (7) from the neck hole (16) by turning it slightly to the right and pull it out.



Equipment cleaning and maintenance

- Before cleaning, always unplug the appliance and allow it to cool.
- Use only a slightly damp cloth to clean the machine itself.
- Do not use any solvents or abrasive cleaners.
- Wash parts in warm water with detergent, wipe them and dry them carefully. Do not leave parts wet. Do not use solvents or abrasive cleaners to clean any elements.
- Wash discs, knife, spiral, funnel and spiral cavity immediately after use to avoid food residues (meat, vegetables).
- Do not wash parts of the machine in a dishwasher.
- Insert clean accessories into the body of the device.



Warning!

Never soak the entire appliance in water or any other liquid!

Wipe the motor base and power cord with a dry cloth. The engine is lubricated with durable grease. No lubrication required.

Technical specifications

| | |
|--|--|
| Power: | 230 V ~ 50 Hz |
| Power consumption: | 600 W |
| Maximum short term power (MPB): | 1 800 W |
| Protection class: | II |
| Dimensions (W x H x D): | 27,5 x 26,5 x 16,5 cm (without accesories) |
| Weight: | 3.9 kg (without accessories) |
| Noise level: | 92 dB (A) |

The declared noise emission value of this appliance is 92 dB (A), which is the A-sound power level with respect to the 1 pW reference sound power.

We reserve the right to make changes!

Producer:

ORAVA retail 1, a.s.
Seberíného 2
821 03 Bratislava
Slovenská republika

Importer:

ORAVA retail 1, a.s.
Seberíného 2
821 03 Bratislava
Slovenská republika

ORAVA distribution CZ, s.r.o.
Ostravská 494
739 25 Sviadnov
Česká republika

DISPOSAL OF USED ELECTRICAL AND ELECTRONIC EQUIPMENT



The symbol on the product or on its packaging indicates that this product does not belong to household waste. It is necessary to take it to a collection point for electrical recycling and electronic equipment.

By ensuring proper disposal of this product, you will help prevent negative consequences to the environment and human health that would otherwise be caused by inappropriate disposal of this product. For more detailed information about recycling of this product, please contact your local authority, your household waste disposal service or the shop where you purchased the product.



This product meets all the essential requirements of the EU directives that apply to it.