

Hand-held cordless vacuum cleaner

orava

VY-224

Instruction manual

EN



Keep the Instruction for further use.

VY-224

The intended use of the device

The device - a household vacuum cleaner, handheld, accumulator - is designed to vacuum dry dust particles and common household impurities (eg, fibers, hair, hair, small dry foods etc.) and a small amount of fluids from the surfaces to the extent determined by the technical and operating parameters and functions, the safety and user instructions and the external influences of the operating environment.

ORAVA electrical appliances are manufactured according to current technical knowledge and recognized safety-technical rules. Nevertheless, the use or use contrary to designation may result in the risk of injury or endanger the life of the user or third person, damage to the device and other material values.

1. GENERAL SAFETY INSTRUCTIONS AND WARNINGS

- This document contains important safety instructions and warnings for safe, correct and economical operation of the electrical equipment. Its compliance helps the user avoid risks, increase reliability and product life.
- In this document, the generic term product is used in text parts such as: electrical equipment - any device used for the production, conversion, transmission, distribution or use of electricity.
- From the point of view of the purpose of using electricity, the concept of electrical equipment in the strict sense of the word will include the following categories:
 - household electric appliances,
 - information and communication equipment,
 - consumer electronics,
 - lighting equipment,
 - electrical and electronic tools,
 - toys and equipment for sporting and recreational

1.1 General safety instructions

- Before commissioning the unit, we recommend that you carefully read the operating instructions and operate the equipment in accordance with the instructions!
- The safety instructions and warnings in this manual do not cover all the possible conditions and situations that may arise when using the device. The user must understand that a factor that can not be incorporated into any of the products is responsibility and caution. These factors must therefore be ensured by users / users who use and operate this device.

- Failure to follow the safety instructions and warnings is forbidden by the manufacturer for any damage to health or property!
- Make sure that the appliance is complete and shows no signs of damage before using the appliance for the first time. If the product is defective or if it has any visible damage, do not use the product.
- Keep the operating instructions as close to the device as possible throughout its service life. Always keep the operating instructions together with the appliance for future use and use by new users.
- Use the appliance only for the purpose for which it is intended and in the manner specified by the manufacturer.
- The appliance is intended for home and similar indoor use, with no special focus.
- It is not a professional device for commercial use.
- Do not change the technical parameters and features of the device by unauthorized modification or modification of any part of the device.
- The manufacturer is not responsible for damages caused during transportation, misuse, damage or destruction of the equipment due to adverse weather conditions.

1.2 Safety of the operating environment

- Do not use the device in an industrial environment or outside environment.
- Always keep the operating environment clean and well lit.
- Do not place the device on an unstable surface. Overriding or dropping the device may result in personal injury or damage to the device.
- Do not expose the unit to direct sunlight or excessive heat sources.
- Do not use an electric appliance in areas with flammable liquids, gases or dust. The appliance may be the source of scaling, which can result in the ignition of dust or vapors.

Features of the operating environment

1. Ambient temperature: $+5 \div +40$ ° C
 2. Humidity: $5 \div 85\%$
 3. Altitude: $\leq 2\,000$ m
 4. Occurrence of water: intermittent condensation of water or occurrence of water vapor
 5. Occurrence of foreign bodies: amount and type of dust are not significant
Protection class: IP20
- Other characteristics of the operating environment (mechanical stress - shocks and vibrations, occurrence of plant, animals, weather effects) are negligible in terms of effect on the correct and safe use of electrical equipment.

1.3 Electrical safety

- Before connecting the appliance to the power supply for the first time, make sure that the voltage on the appliance label corresponds to that of the household electrical outlet.
- The electrical appliance is designed for mains supply 230 V ~.
The electrical safety of the appliance is guaranteed only if it is properly connected to the electricity grid.
- Only use a power cord with a plug (mains lead) that came with the device and compatible with a wall outlet. Using another cable may result in fire or electric shock.
- Always connect an electrical appliance to an easily accessible power outlet. In the event of an operating fault, the appliance must be switched off as soon as possible and disconnected from mains supply.
- Do not pull the power cord / power cord by pulling on the cord / cord. Disconnect the power cord by pulling the plug behind the power cord / power cord plug.
- If you use an extension cord, check that the total rated (ampere) power of all devices connected to the extension cord does not exceed the maximum current rating of the extension cable.
- If you need to use an extension cord or power supply block, make sure that the extension cord or power pack is plugged into a power outlet, and not to another extension cord or power supply. Extension power cord or power supply block must be designed for grounded plugs and plugged into a grounded outlet.
- The power plug of the appliance must be compatible with the mains socket. Never use any adapters or modify the socket in any other way. Do not use inappropriate or damaged sockets.
- To avoid electrical shock, plug the power cables into properly grounded electrical outlets. If the device is equipped with a 3-pin power supply cord, do not use adapters that do not have a grounding element or remove the grounding element from the plug or adapter.
- Do not bend, crush or otherwise expose the power cord / power cord of the appliance to mechanical stress or external heat sources. Damage to the power cord may result in electric shock.
- If the power cord is damaged, disconnect the appliance from the mains and do not use it again. If the power cord / power cord is damaged, it must be replaced by the manufacturer, its service department, or a qualified person to avoid the risk of electric shock.
- Regularly check and maintain the electrical appliance as well as the power cable. Disconnect the power plug regularly and clean it if necessary. Pollution by dust or other substances may cause disruption of the insulating state and consequently fire.
- Do not expose the appliance to water or moisture. The ingress of water into the appliance increases the risk of electric shock. If the power cord

is wet or the appliance gets water, disconnect it immediately from the mains. If the appliance is plugged into a mains socket and if possible, turn off the power supply before attempting to disconnect the power supply. If you are pulling wet wires from a live power source, be very careful.

- If the electrical equipment is installed (connecting) the protective covers are dismantled, the electrical parts must not be accessible to the user when the installation is finished.

1.4 Safety of persons

- This appliance is intended for use by persons without an electrotechnical qualification (layperson) according to the instructions specified by the manufacturer.
- Device operation includes activities such as switching on and off, user manipulation and setting of operating parameters, visual or auditory inspection of the equipment, and user cleaning and maintenance.
- This appliance can be used by children 8 years of age and older and persons with reduced physical, sensory or mental abilities or lack of experience and knowledge only when under the supervision or guidance of the responsible person have been instructed to use the appliance in a safe way and understand the potential hazards .
- Cleaning and user maintenance can be carried out by children 8 years of age and older only under the supervision of the responsible person.
- Children may not play with the appliance.
- Always keep the appliance out of reach of children during use and operation. Be sure to download the appliance even for a freely accessible power cord.
- Always be careful when operating the electric appliance. Do not use an electric appliance if you are overly tired, under the influence of medication or narcotic drugs that reduce attention and focus. Inattention during operation may result in serious injury.

1.5 Cleaning, maintenance and repairs

- Observe the normal user cleaning and maintenance of the appliance in the recommended way. Do not use solvents or harsh cleaners for cleaning. Pollution and visible stains from finger contact, respectively. The hands can be cleaned using detergent detergents specially designed to clean household appliances.
 - If you do not use the appliance, clean it or disconnect the appliance from the power supply when the appliance is faulty.
 - Do not disassemble the appliance. The appliance works with a dangerous voltage. For this reason, always switch off the appliance and disconnect it from the power supply. In the event of a fault, please have the repair serviced by an authorized service center.
 - Only guarantee qualified and qualified personnel to repair and repair the electrical appliance.
- (*) Appropriate qualified professional: the sales department of the manufacturer or importer or the person qualified and authorized to carry out this type of activity with the ability to avoid all risks.

2. Special Safety Instructions.

Read carefully!

- Electrical equipment is designed and manufactured in such a way as to allow for safe operation and use by persons without a professional qualification. Despite all the measures taken by the manufacturer to ensure safe use, handling and use, it carries with it some residual risks and associated potential hazards.
- The following symbols and their meanings have been used on the device and in the accompanying documentation to warn of possible hazards:



This symbol alerts users that the device is operating a dangerous electrical voltage. Do not remove protective covers on the device.

Failure to observe the safety instructions during use and operation of the device may result in:

Danger of electric shock! Danger of serious injury or life threatening!



This symbol alerts users that the following precautions can be avoided if the following precautions are observed when operating and operating the device:

Danger of serious injury or life threatening!

Danger of damage to equipment or other damage to property!



This symbol means that the product is made with a double insulation between hazardous live parts (parts with dangerous voltage from the mains) and parts that are accessible in normal use.



This symbol means that protection against electric shock is ensured by a safe low voltage (SELV) so that the device is operated only by batteries or by a rechargeable battery.

The battery is not recharged away from the appliance.

The main part of the appliance is made as a protection class III.

Transportation/Transfer

- When transporting and using, for example, of the transport cart, be careful when moving, to avoid overturning the device.
- Transfer the device only after disconnecting the AC power.
- The device is intended for manual guidance / scrolling and transmission.
- Grasp the ergonomic handle while using the device. Do not move or convey the power cord.

There is a risk of serious injury or life threatening!

There is a risk of damage to the device!

Unpacking/Packaging

- Unpack the equipment and accessories before putting use and remove any parts of packaging waste, labels and tags. Store the packaging in a safe place or keep it out of the reach of children and inappropriate persons.

There is a risk of serious injury! Risk of suffocation!

Checking/Getting started

- We recommend performing both initial and subsequent regular machine inspections.
- Do not use the appliance without the required filters and accessories.
- Never use the appliance if it is incomplete, damaged, or if parts or accessories (eg. due to fall) have been damaged during use.
- Pay particular attention to regular monitoring of the power supply and the functioning of the power supply.
- Clean the machine before use as described in the „Startup“ section.
- „Cleaning“.
- Never clean the device (body with electrical parts) and the power supply in a way that could cause the liquid to flow into the device.
- Clean these parts with a damp cloth only and wipe dry or let it dry.
- Only clean the appliance if it is switched off and disconnected from the mains.

There is a risk of electric shock!

There is a risk of serious injury!

Operation/Location/Supervision

Warning!

- The device is equipped with a power adapter for recharging the built-in rechargeable battery. The power supply is working with a dangerous voltage, so follow the following safety instructions and cautions:
 - To charge the built-in battery, use only the supplied accessories and the power supply supplied by the manufacturer, or the type specified and approved by the manufacturer of the equipment.
- Charge the battery indoors only. Locate and install the battery charging bracket so that you avoid as much as possible dangerous situations.
- Do not expose the power supply and cord to excessive heat, mechanical influences, water, and other liquids and excessive moisture.
 - Before each power supply connection to the power supply, make sure the device is turned off.
 - For any use, make sure the power cord is not damaged. If you find any damage, do not use the appliance.
 - Do not disconnect the mains plug from the electrical socket by pulling the cord.
 - Do not leave the mains plug connected to an electrical outlet while the device is not in place in the charging bracket, and the battery is not charging.
 - Do not use the mains feeder if it drops on the floor, if it shows signs of malfunction or damage, if excessive noise is produced.
 - If the AC power adapter is connected to the power supply, the surface of the power supply unit may slightly warm up while charging the battery. It is a normal operating state and is not a fault.
 - If the AC power cord or the cord with the connector is damaged, it must be replaced by a new, corresponding type. Replacement of the feeder for your device will be ensured by the manufacturer, his expert service or a qualified person.

- Use the power supply only in the indoor environment. Ensure that the characteristics and properties of the environment are respected in order to avoid the occurrence of a hazardous situation.
- Do not connect the mains adapter to the wall outlet while your hands are wet or the power cord or appliance is wet. Always dry hands, power cord and equipment dry with a dry cloth.
- Do not allow the power cord to hang over the sharp edges of the furniture, which could damage its protective insulation and cause danger.
- Only clean and service the device when the device is switched off and disconnected from mains power. Never immerse the power supply in water or other liquids.

Warning!

- The appliance and power supply must not be left unattended when connected to a power supply.
- Never leave the appliance unattended and freely accessible and do not leave it with a loose power cord. Children, inappropriate persons or animals could download the device and cause serious injury. There is a risk of electric shock!

There is a risk of serious injury!

Warning!

- The appliance is designed to vacuum dry and small quantities and spills.
- Drying of dry impurities does not require special actions for use. To use vacuum cleaners, use appropriate fittings.
- Observe the following instructions when cleaning liquids:
 - Use a soft plastic extension designed for this purpose to remove liquids.
 - Check the condition and contents of the dirt container before cleaning the fluids.
 - Dispose of the dirt container thoroughly and remove any debris as much as possible. Mixing the dry impurities contained in the container and the sucked liquid results in a mass of consistency that can seriously damage, damage, or even destroy the device.

- Do not swing the device in a direction that the fluid can get into the engine part or other electrical parts.
- Do not exceed the amount of liquid to be sucked, which is determined by the boundary of the symbol depicted on the surface of the dirt container.
- After emptying the liquid, drain the appliance and dry thoroughly. Allow the filters to dry. Thus, the device is ready for further use for dry and dirty liquids.

Warning!

- Do not use the appliance to vacuum grease material, such as:
 - fats, oils and the like.
- Do not use the appliance to vacuum technical materials such as:
 - fine glass and metal particles, residual pieces of building materials and the like.
- Do not use the device to vacuum chemical and toxic materials and their particles, such as:
 - chlorine and ammonia cleaners, bleaches, and the like.
- Do not use the appliance to vacuum easily combustible and flammable materials and their particles, such as:
 - solid and / or liquid ignitors, gasoline, diluents and the like.
- Do not use the appliance to remove hot objects, materials and their particles, such as:
 - cigarette cages and cigarette ash, coal and coal ash, matches, and the like.
- When vacuuming very fine particles, the pores of the dust filter may become filled and the suction power may be reduced. In this case, the filter must be cleaned / replaced even if the dirt tank is not filled.
- Immediately switch off the device if the larger object is sucked in and the suction line is blocked. Do not continue to use the appliance until the object has been removed and the inlet and outlet of the suction line have been removed.
- Only place the machine on a flat and stable surface.

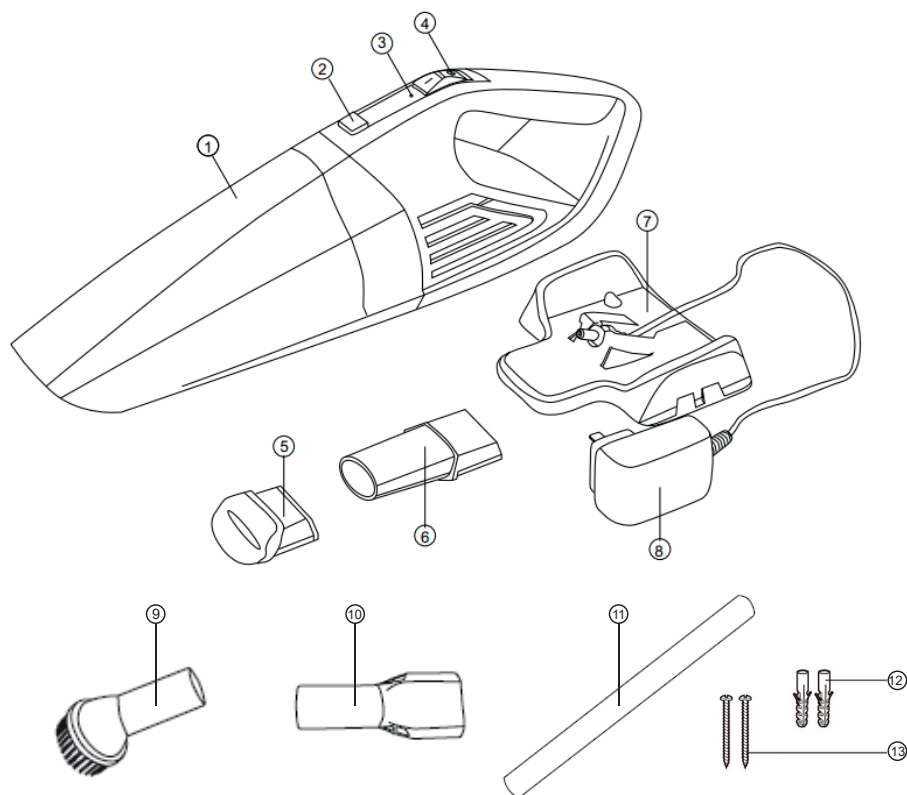
- Do not place the appliance:
 - on unflat and dirty surface,
 - at the edges of tables or parts of furniture,
 - nearby of sources of excessive heat and open flame,
 - nearby containers with water or other liquids. There is a risk of serious injury!
 There is a risk of damage to equipment or other property damage!

Warning!

- Do not use the appliance to vacuum fabrics and clothing directly on persons!
- Do not use the device to vacuum animal hair and hair directly on pets!
- When using the device (if the device is in operation) don't expose yourself (part of the body, face, hair, loose clothing etc.), other people or animals by suction (vacuum) from the intake manifold attachments or accessories.
There is a risk of serious injury!
- Only install and disassemble individual parts and accessories, clean and carry the device when the appliance is switched off and disconnected from the power supply.
- Always turn the appliance on with the main switch. After switching off, turn off the device with the main switch. If the main switch does not work on the device, do not use the appliance.
- Do not use or place the appliance in a place where children may freely reach.
- Prevent children from playing with the device. The device may overwhelm children and cause them injuries.
- Mechanical damage (breakage or breakage of parts and covers, insulation damage, etc.) can cause serious injury. Do not use the damaged device.
There is a risk of serious injury!
There is a risk of damage to equipment or other property damage!

- Do not use or place the appliance near water containers. If the appliance falls into the water, allow it to dry thoroughly. In such case the check-in to a specialist service to check that it is safe and that it works properly.
- Do not cover the appliance in part. Do not insert or allow the foreign bodies to enter the holes of the device covers.
- Do not cover the openings of the airflow covers. Air ventilation ensures proper operation, reliable and safe operation of the device.
- Always keep your device under control during use and operation!
- This device is not intended to be operated by a programmer, an external time switch or a remote control, because there is a risk of fire when covered or incorrectly positioned.
- Never overload the equipment beyond the limits specified by the technical specifications!
- Observe the operating mode of the device (operating time / operation and breaks) in accordance with the operating and operating instructions. Clean the device regularly and empty from dirt. Overfilling and over-fouling may result in reduced operating parameters, possible overheating, and subsequent damage.
- If you notice any unusual occurrences (sounds, odors, smoke,...), immediately switch off the device and unplug it from the mains. Have the appliance checked by a specialist workshop.
- If any safety component/component (mechanical, electrical) is part of the device, never disable this part / component! If the safety component / component is damaged or not working, do not use the appliance!
- Never underestimate the potential hazards and take extreme caution!!!

Description of parts



- 1 Waste bin
- 2 Waste bin opening button
- 3 Indicator light (when charging and operating)
- 4 ON/OFF switch
- 5 Water suction adjustment
- 6 Joint nozzle
- 7 Charging bracket
- 8 AC power adapter
- 9 Dust brush bet
- 10 Connecting adapter
- 11 Extension tube
- 12 Dowels
- 13 Screws

Assembly and operation

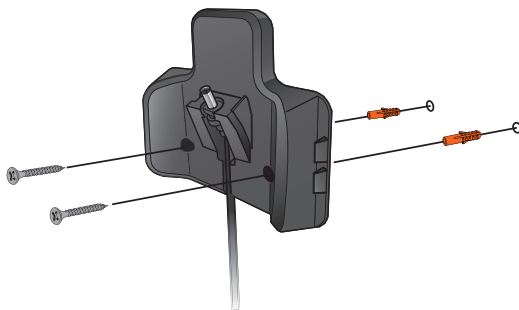
Before first use

Unpack and remove all packaging material from it.

Attach the charging bracket to the wall

Fasten the charging bracket (7) to the solid wall, to a stable, clean and dry surface.

Only use the screws and dowels supplied with this device.



The device must be located so that neither children nor mentally handicapped persons can reach the power supply.

The charging bracket must be turned upwards and so high that the device is mounted downward with the dipstick (1). The brackets on the edge of the bracket serve as an accessory rack.

Slide the accessories to the outputs on the edges of the holder.



Charging the device

Plug the AC adapter into an electrical outlet.

Make sure the **ON OFF** switch (3) is in the OFF position. Place the device in the charging bracket so that the charging connector is plugged into the device and charge the device.

When the device is properly installed, the LED will blink and will turn red in a short time.

The device does not have a fully charged battery indicator. Charge time is 4 to 5 hours.

Note:

If you do not use the device, always place it in the charging bracket (7).

After 5 minutes of continuous use, suction power can be reduced.

Do not leave your device uncharged for a long time, as it may reduce battery life and performance.

Note:

If the battery is discharged, the LED indicator flashes green.

The device can not be turned on while charging the battery. The device is equipped with a battery overcurrent protection, so the vacuum cleaner can be permanently placed in a holder with a charging adapter attached.

Assembly of the device

Before removing accessories, unplug the AC adapter from the electrical outlet.

1. Insert the filter into the tray

Press the sweep tray release control (2) and remove the tray (1). If there is no filter, put it in the cartridge and fix the filter cartridge to the vacuum cleaner.

Cleaning the filter

If you need to empty the tray and clean the filter, press the sweep tray release knob to select the stack. Pull out the filter housing. Carefully tap the filter and discard the dirt. You can rinse it with water. The filter must completely dry before reinserting.

2. Insert the extension tube into the suction opening

Installing a tube with a brush or a water nozzle

Insert an extension tube or other nozzles into the suction opening. Vacuum accessories can be connected directly to the suction inlet of the vacuum cleaner or to the extension tube using a connecting adapter.

Accessories

Extension tube

This tube serves as an extension of the vacuum cleaner and can be fitted with a brush nozzle and without a handle it also serves as a nozzle for use in vacuuming radiators, joints, corners, walls and gaps between the mattresses.

Dish with brush

Use a dust brush to vacuum hard flat surfaces.

Note:

The brush nozzle or extension tube can only be used in combination with the adapter adapter (10).

Using the vacuum cleaner

1. Open the dirt tray to see if the filter is properly installed.
2. Connect the AC adapter to the charging bracket and then to the power supply.
3. Place the vacuum cleaner into the charging cradle and allow it to be charged for approximately 4-5 hours (first use) without interruption.
4. After charging, select the vacuum cleaner from the holder, install the necessary accessories and turn the on / off switch on to turn on the vacuum cleaner. The indicator light will glow green.
5. Hold the vacuum cleaner on the handle and vacuum dirt.



WARNING!

Vacuuming the items below may cause damage to the appliance or personal injury:

- any sharp objects (eg glass, crevices, needles, pins, etc.)
- burning cigarettes and caking agents, matches, any flammable or volatile liquids (eg petrol, thinners, etc.)
- flour, cement, plaster (or drilling holes in the walls during drilling).

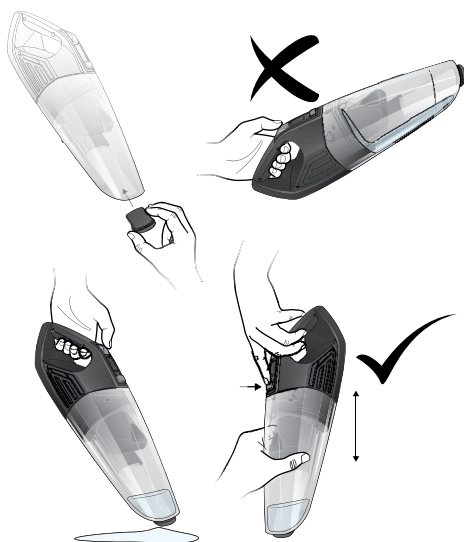
Using a vacuum cleaner

1. Open the dirt tray to see if the filter is properly installed.
2. Connect the AC adapter to the charging bracket and then to the power supply.
3. Place the vacuum cleaner into the charging cradle and allow it to be charged for approximately 4-5 hours (first use) without interruption.
4. After charging, remove the vacuum cleaner from the holder, install the water drain nozzle and turn the on / off switch on to turn on the vacuum cleaner. The indicator light will glow green.
5. Hold the vacuum cleaner on the handle and vacuum the water so that the vacuum cleaner always keeps the suction opening with the nozzle down.

Notifications!

Never use a vacuum cleaner other than cold water.

Do not exceed the MAX level when vacuuming. (the MAX level must always be considered when the device is in the upright position with the intake port downward). Always keep the device in the upright position and the suction port downward when removing liquids. Never use the machine in a different position and never allow the fluid to come into contact with the engine.



After vacuuming

1. Turn the vacuum cleaner off by pressing the **ON/OFF** switch on the unit.
2. Disconnect the AC Adapter from the AC outlet.

Emptying the bin and cleaning and replace the filter

If the vacuum cleaner has a weaker performance, empty the dirt bin or clean the filter. If the suction power is greatly reduced, check if is a blocked suction nozzle, an extension tube, or a waste hopper hole.

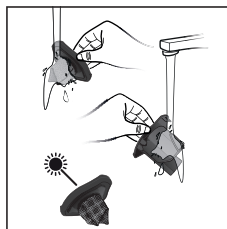
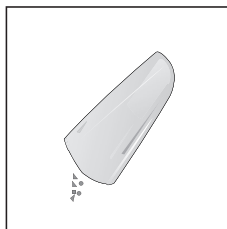
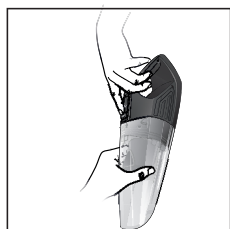
Warning!

Before discharging the bin, unplug the AC adapter from the electrical outlet to avoid electric shock.

Note:

When vacuuming new carpets or fine fiber mats, the tray may fill faster, so check it more often. Never dispose of the waste container and the filter without the inserted hopper.

1. Press the sweep tray release knob to remove the tray.
2. Pull out the filter housing.
3. Carefully patch the filter and discard the dirt. You can rinse it with water. The filter must completely dry before reinserting. If necessary, replace the filter with a new one.
If you have drained water, pour the water out of the tank so that the suction opening always goes down to prevent water from entering the device.
4. Insert the cleaned filter housing back into the cartridge.
5. Insert the filter cartridge into the vacuum cleaner.



Warning!

Before loading the tray, make sure that the filter is correctly inserted or protrudes from the compartment and that it does not prevent the cartridge from fitting properly.

Cleaning the suction opening

If the suction opening of the vacuum cleaner becomes obstructed, proceed as follows:

1. Select the supplied accessories.
2. Remove the obstruction from the suction hole.
3. Replace the accessory back into the suction opening of the vacuum cleaner.

Cleaning and maintenance

- Disconnect the power cord from the power supply.
Never immerse the appliance under running water or immerse it in water.
- Clean the device and accessories with a soft cloth.
Do not use solvents or harsh detergents for cleaning.
- After cleaning, the device must remain completely dry.

Thermal engine fuse

The device is equipped with a thermal fuse before overloading and before overheating. Such a situation can occur in the case of locking of the opening or nozzles. If the device switches itself off in the middle, turn it off and wait at least 45 minutes for the engine to cool down.

Then remove any possible cause of the hole or nozzle blockage, empty the dispenser and clean the filter. After the engine has cooled down, turn it on again. If the device still does not work properly, contact a service center.

Technical specifications

Power supply:	AC adapter: 230 V~ 50 Hz output: : DC voltage 18 V, 500 mA
Power consumption:	100 W (max.)
Suction power:	12 W (max.)
Rechargeable battery:	Li-ion 14,8 V, 2 200 mAh
Charging time:	aprox. 4 - 5 hod.
Operating time per charge:	aprox. 20 minút
Dimensions (W x H x D):	41,5 x 13 x 11 cm
Weight:	0,93 kg
Capacity:	0,5 l
Noise level:	72 dB (A)

The declared noise emission of this appliance is 72 dB (A), which represents the A sound power level with respect to the reference sound power of 1 pW.

Package Contents:	vacuum cleaner (1 pc) nozzle with dust brush (1 pc) nozzle for liquids (1 pc) nozzle nozzle (1 pc) connecting adapter (1 pc) AC Adapter (1 pc) charging Holder (1 pc) plug (2 pcs) screws (2 pcs) instructions for use (1 pc)
--------------------------	--

The right to change is reserved!

Producer:

ORAVA retail 1, a.s.
Seberínho 2
821 03 Bratislava
Slovenská republika

Importer:

ORAVA retail 1, a.s.
Seberínho 2
821 03 Bratislava
Slovenská republika

ORAVA distribution CZ, s.r.o.
Ostravská 494
739 25 Sviadnov
Česká republika

DISPOSAL OF USED ELECTRICAL AND ELECTRONIC EQUIPMENT

The symbol on the product or on its packaging indicates that this product does not belong to household waste. It is necessary to take it to a collection point for electrical recycling and electronic equipment.

By ensuring proper disposal of this product, you will help prevent negative consequences to the environment and human health that would otherwise be caused by inappropriate disposal of this product. For more detailed information about recycling of this product, please contact your local authority, your household waste disposal service or the shop where you purchased the product.



This product meets all the essential requirements of the EU directives that apply to it.