

Electric wine corkscrew

orava

WO-9

Instruction manual

EN



WO-9

Intended use of the device

The device is intended exclusively for opening corks of ordinary wine bottles (or other similar bottles with cork and plastic closures), to the extent that is determined by the technical and operational parameters and functions, safety and user instructions and external influences of the operating environment.

Warning!

Do not use the device to open the caps of sparkling wine bottles (pressure caps).

Safety instructions for using the device

- The electrical device is designed and manufactured in such a way that it can be safely operated and used by persons without professional qualifications. Despite all the measures taken by the manufacturer for safe use, operation and use carry certain residual risks and possible dangers associated with them.
- To warn of possible dangers, the following symbols and their meaning have been used on the device and in the accompanying documentation:



This symbol warns the user that failure to observe the safety instructions when using and operating the device may result in:
Danger of serious injury or death!
Danger of damage to the device or other property!



This symbol warns users that failure to follow the safety instructions when using and operating the device may result in:
Danger from sharp parts/components of the device!



This symbol warns that the electrical device uses safe low voltage for its operation.



This symbol means that the device is not supplied with a power supply.



This symbol means that the device is compatible with adapters with a charging power of up to 5 to 10 watts.

General instructions

- Before putting the device into operation, we recommend that you carefully study the operating instructions and operate the device according to the specified instructions!
- Failure to observe the safety instructions and warnings will not cause any damage to health or property!
- Always keep the operating instructions with the device for future use and use by new users.
- Use the device exclusively for its intended purpose and in the manner specified by the manufacturer.
- The device is intended for use in households and similar indoor spaces intended for living, without special orientation.
- In addition to household use, this device is also intended for the following uses:

- in shops, offices and other similar working environments;
- in farm buildings;
- in hotels, motels and other residential environments;
- in bed and breakfast establishments.

This is not a professional device for commercial use.

- The manufacturer is not liable for damage caused during transport, improper use, damage or destruction of the device due to adverse weather conditions.
- Do not use the device in an industrial environment or outdoors!
- Do not expose the device to:
 - sources of excessive heat or open flames,
 - dripping or splashing water,
 - insects, animals and plants,
 - aggressive and chemical substances.
- The operating environment of the device must always comply with the specified basic characteristics.

Operating environment characteristics:

1. Ambient temperature: $+5 \div +40\text{ }^{\circ}\text{C}$
 2. Humidity: $5 \div 85\%$
 3. Altitude: $\leq 2000\text{ m}$
 4. Presence of water: occasional water condensation or presence of water vapor
 5. Presence of foreign bodies: the amount and type of dust are insignificant
 6. Degree of protection by the housing: IP20
- Before connecting the electrical appliance to the power supply for the first time, check that the mains voltage indicated on the appliance label corresponds to the voltage of the household mains socket.

- The electrical appliance is designed to be powered from the 1/N/PE ~ 230 V 50 Hz mains supply
- The electrical safety of the appliance is guaranteed only if it is correctly connected to the mains supply.
- Always connect the electrical appliance to an easily accessible mains socket. In the event of an operating fault, the appliance must be switched off and disconnected from the mains supply as quickly as possible.
- Do not disconnect the power cable/mains cord by pulling on the cable/cord. Disconnect by pulling the power supply by the plug of the power cable/mains cord.
- If you use an extension power cable, check that the total rated power of all devices connected to the extension power cable does not exceed the max. current load of the extension cable.
- The plug of the appliance's power cable must be compatible with the mains socket. Never use any adapters or modify the socket in any other way. Do not use unsuitable or damaged sockets!
- Do not bend, crush or otherwise expose the appliance's power cable/mains cord to mechanical stress or external heat sources. Damage to the power cable can lead to electric shock.
- If the power cable is damaged, unplug the appliance from the mains and do not use it any further.
- If the power cable/mains cord is damaged, it must be replaced by the manufacturer, its service agent or a similarly qualified person in order to avoid a risk of electric shock.

- Regularly check the electrical appliance, as well as the power cord and the power socket, and keep it clean. Regularly unplug the power cord plug and clean it if necessary. Contamination with dust or other substances can cause insulation damage and subsequently cause a fire.
- Do not expose the electrical appliance to water or a damp environment. Water entering the appliance increases the risk of electric shock. If the power cord is wet or water has entered the appliance, immediately disconnect it from the power supply.
- This appliance is intended for use and operation by persons without electrical qualifications - laymen, according to the instructions specified by the manufacturer.
- This appliance can be used by children aged from 8 years and above and persons with reduced physical, sensory or mental capabilities or lack of experience and knowledge if they have been given supervision or instruction concerning use of the appliance in a safe way and understand the hazards involved. Children must not play with the appliance.
Cleaning and user maintenance must not be carried out by children without supervision.
- Always keep the appliance out of the reach of children during use and operation. Remember that the appliance can also be pulled by the freely accessible power cord.
- Always exercise caution when operating an electrical appliance! Do not use an electrical appliance if you are excessively tired, under the influence of medication or drugs that reduce your alertness and concentration. Inattention during operation can lead to serious injury.

Special safety instructions

- When transporting and using the device, be careful when moving it to prevent it from tipping over, falling or damaging it. Only carry the device after disconnecting it from the mains.
Do not carry the device by the power cable/cord.
There is a risk of serious injury or death!
There is a risk of damage to the device!
- Before putting the device into operation, unpack the device and accessories and remove all remaining packaging materials, labels and tags from all parts. Put the packaging materials in a safe place or keep them out of the reach of children and infirm persons.
Risk of serious injury! Risk of suffocation!
- We recommend that you carry out initial and regular checks of the device. Use the device only with accessories and spare parts supplied and approved by the manufacturer.
- Never use the device if it is incomplete, damaged or if its parts or accessories have been damaged during use (e.g. as a result of a fall). Risk of electric shock!
Risk of serious injury!
- Never clean the device (body with electrical parts) and the power cable with plug in a way that could cause liquid to leak into the device.
Clean these parts only with a damp cloth and wipe dry or leave to dry.
- Only clean the device when it is switched off and disconnected from the mains. Keep the device clean and dry.

Operation/Supervision

Warning!

- This device may only be used with original and undamaged parts and accessories.
- Be very careful when using the device. The rotating corkscrew (spiral) is sharp and can cause serious injury.
- Never reach into the area of the rotating spiral (corkscrew) while the device is in operation.

Do not remove the cork from the device while the rotating spiral is in motion.

There is a risk of danger from sharp parts/ components of the device!

- Always supervise the device during use and operation!

Warning!

- Always unplug the device from the mains if it is left unattended and before assembling, disassembling or cleaning.
- The device and the power cable (mains adapter) must not be left unattended while connected to the mains.
- Never leave the device unattended and unobstructed and do not store it with the power cable unobstructed. There is a risk of electric shock!
- Do not place the device:
 - on the edges of tables or furniture,
 - on unstable or uneven surfaces,
 - on dirty surfaces,
 - near containers containing water and other liquids.

There is a risk of serious injury! There is a risk of damage to the device or other property!

- Only assemble and disassemble (assemble) individual parts and accessories and clean the device when the device is disconnected from the electrical supply.

- Do not use or place the device in a place where children can freely reach it. Prevent children from playing with the device.
- Mechanical damage (cracking or breaking of parts and covers) of the device can cause serious injury. Do not use damaged devices and accessories. Risk of serious injury! Risk of damage to the device or other property damage!
- Do not use or place the device near containers containing water. If the device falls into water, take it to a specialist workshop to check whether it is safe and functioning properly.
Risk of electric shock!
Risk of electric short circuit!
- Never overload the device beyond the limits set by the technical parameters!
- Always divide the operating mode (operating/activity time and break time) of the device into recommended working intervals, and follow these according to the instructions.
- Do not attempt to use excessive force or rotate the device on the bottle to speed up the device's operation.
- If you notice any unusual phenomena (sounds, smells, smoke, ...) while using the device, immediately turn off the device and disconnect it from the power supply from the mains. Have the device checked by a professional service.
- If the device includes any safety part/component (mechanical, electrical), never disable this part/component! If the safety part/component is damaged or malfunctioning, do not use the device!
- Never underestimate the possible dangers and exercise extra caution!!!

Powering the device using a rechargeable battery.

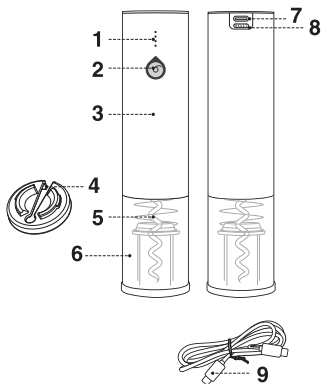
- The device is supplied with an incompletely charged built-in battery.
- To achieve maximum capacity and the longest possible battery life, it is necessary to completely discharge the battery and then charge it to the maximum level. This procedure must be repeated at least 3 cycles, each time after the built-in battery is completely discharged.

When charging the battery, follow the instructions below:

- Before charging the built-in battery, turn off the device with the main switch.
- Insert the (TYPE-C) connector of the AC/DC adapter cable into the device connector for charging.
- Insert the (AC) plug of the charger cable into a 230 V ~ electrical outlet.
- After connecting the power supply, the charging indicator light will light up.
- After charging is complete, disconnect the (AC) plug of the charger cable from the power outlet. Disconnect the (TYPE-C) connector from the device connector.
- The device's power source (built-in battery) is ready and the device can be used.
- The battery will gradually discharge during use. For further use, it is necessary to recharge the battery according to the instructions.

Operation

Device description:



1. LED charging/battery capacity indicators
2. cork pull button - opening
3. device body
4. foil cutter
5. corkscrew
6. visor
7. charging connector
8. reset button
9. TYPE-C charging connection cable

Preparation

A modern electric wine corkscrew will allow you to open your favorite wine quickly, effortlessly and without stains on the tablecloth. Unlike a classic corkscrew, it is very convenient, practical and also has a perfect design. It will open the wine in a few seconds. The package also includes a cork foil cutter that protects the cork.

- Electric wine opener illuminated by a blue LED
- It does not require batteries, as it uses a built-in rechargeable battery. The maximum charge takes about 2.5 hours.
- The set includes a cork foil cutter that protects the cork, a wine corkscrew and a connecting charging cable.
- An ideal gift for wine lovers

Charging:

Before using the device, it is necessary to fully charge the battery.

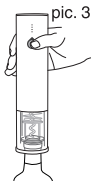
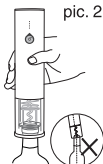
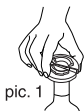
1. Connect the connecting cable to a suitable AC adapter (not supplied) and to the TYPE-C charging connector on the corkscrew.
2. Connect the AC adapter to a designated and easily accessible electrical outlet. The charging indicators will light up and then start flashing in sequence according to the battery charge.
3. When the battery is fully charged, all 4 indicators will light up and stop flashing.

The device is equipped with a battery overcharge protection system. The first maximum charge takes several hours (approx. 2.5). To achieve optimal battery health, use the device for the first three cycles until the battery is completely discharged, then always charge it to the maximum.

During charging, 4 white LEDs will flash in sequence.

Use (opening wine)

- 1 Use the foil cutter to remove the foil from the bottle covering the cork (pic. 1).
- 2 Place the corkscrew vertically on the neck of the bottle and hold it vertically. Otherwise, the cork will not be able to be pulled out successfully (pic. 2).
- 3 Press the corkscrew against the neck of the bottle, press the opening button and hold the bottle with the other hand (pic. 3). The entire corkscrew is screwed into the cork. The cork is pulled out of the bottle and screwed into the corkscrew. Once the cork is fully opened, the corkscrew automatically stops working.
- 4 When the cork is completely removed, lift the wine opener from the bottle. The opener will automatically reverse and the corkscrew will rotate in the opposite direction and the cork will slide out of the corkscrew (pic. 4).
- 5 Put the corkscrew away after use.
- 6 If the cork breaks or gets stuck in the wine opener while pulling it out, press the reset button. The opener will automatically reverse and push the broken or stuck cork out of the opener.



Cleaning

When cleaning, never immerse the device or AC adapter in water or any other liquid!

Clean the device with a dry cloth slightly dampened with water. Do not use any harsh detergents or solvents such as alcohol, gasoline or thinner for cleaning. The motor is lubricated with durable Vaseline. No lubrication is required.

Replacing the battery

The device is powered by a built-in battery. If the device operates for a significantly shorter time or does not operate at all after maximum charging, the battery will need to be replaced by an authorized service center.

Technical data

Power supply: 3.7 V, 500 mAh Li-ion battery

AC adapter (not included):

Input: 220 - 240 V~ 50 Hz

Output: 5V DC/ 1,000 mA / 10W

Supplied Accessories:

foil cutter, charging cable

Dimensions: 20 cm, 4.5 cm diameter

Weight: 240 g

Noise: < 75 dB (A)

The declared noise emission value of this appliance is < 75 dB (A), which represents the A-weighted sound power level with respect to the reference sound power of 1 pW.

The right to make changes is reserved.

INSTRUCTIONS AND INFORMATION REGARDING THE DISPOSAL OF USED PACKAGING

Dispose of used packaging material at a municipal waste disposal site.

DISPOSAL OF USED ELECTRICAL AND ELECTRONIC EQUIPMENT



This symbol on the products or in the accompanying documents means that used electrical and electronic products should not be mixed with general household waste. For proper disposal, recovery and recycling, please return these products to designated collection points. Alternatively, in some countries of the European Union or other European countries, you may return your products to your local retailer when purchasing an equivalent new product. By ensuring this product is disposed of correctly, you will help prevent potential negative consequences for the environment natural resources and help prevent potential negative effects on environment and human health, which could be the consequences of improper disposal waste. Contact your local authority or nearest office for more details collection point. Improper disposal of this type of waste may result in penalties in accordance with national regulations.

For business entities in the countries of the European Union

If you wish to discard electrical and electronic equipment, please request the necessary information from your seller or supplier.

Disposal in other countries outside the European Union

This symbol is valid in the European Union. If you wish to discard this product, please request obtain the necessary information on the correct method of disposal from the local authorities or from the your supplier.

BATTERY DISPOSAL



Batteries contain substances harmful to the environment and therefore do not belong in the normal household waste. Take them for disposal in accordance with applicable regulations and standards at their take-back points.



This product meets all the essential requirements of the EU directives that apply to it.