

Electric hair clipper

**orava**

**VS-414**

Instruction manual

EN



CE

# The intended use of the device

The device is intended exclusively for cutting / trimming clean and dry hair of persons to the extent specified by technical and operating parameters and functions, safety and user instructions and external influences of the operating environment.

The device can also be used for trimming longer mustache and beard on the face. When using the device for this purpose, increased caution when moving with cutting knives or with attachments near the facial skin.

The device is powered (by type) with a rechargeable battery or replaceable battery and is intended for use on the one hand without the AC/DC adapter charging cable or with the AC/DC adapter charging cable attached.

ORAVA electrical appliances are manufactured according to current state of the engineering and recognized safety-technical rules. Nevertheless, incorrect or improper use, or use contrary to designation may result in the risk of injury or endanger the life of the user or third person, damage to the device and other material values.

## 1. GENERAL SAFETY INSTRUCTIONS AND WARNINGS

This document contains important safety instructions and warnings for safe, correct and economical operation of the electrical equipment. Its compliance helps the user avoid risks, increase reliability and product life.

### 1.1 General safety instructions

- Before commissioning the unit, we recommend that you carefully read the operating instructions and operate the equipment in accordance with the instructions!
- The safety instructions and warnings in this manual do not cover all the possible conditions and situations that may arise when using the device. The user must understand that a factor that can not be incorporated into any of the products is responsibility and caution. These factors must therefore be ensured by users / users who use and operate this device.
- Failure to follow the safety instructions and warnings is forbidden by the manufacturer for any damage to health or property!
- Make sure that the appliance is complete and shows no signs of damage before using the appliance for the first time. If the product is defective or if it has any visible damage, do not use the product.
- Keep the operating instructions as close to the device as possible throughout its service life. Always keep the operating instructions together with the appliance for future use and use by new users.
- Use the appliance only for the purpose for which it is intended and in the manner specified by the manufacturer.

- The appliance is intended for home and similar indoor use, with no special focus.
- It is not a professional device for commercial use.
- Do not change the technical parameters and features of the device by unauthorized modification or modification of any part of the device.
- The manufacturer is not responsible for damages caused during transportation, misuse, damage or destruction of the equipment due to adverse weather conditions.

## 1.2 Safety of the operating environment

- Do not use the device in an industrial environment or outside environment.
- Always keep the operating environment clean and well lit.
- Do not place the device on an unstable surface. Overriding or dropping the device may result in personal injury or damage to the device.
- Do not expose the unit to direct sunlight or excessive heat sources.
- Do not use an electric appliance in areas with flammable liquids, gases or dust. The appliance may be the source of scaling, which can result in the ignition of dust or vapors.

### Features of the operating environment

1. Ambient temperature:  $+5 \div +40^{\circ} \text{C}$
  2. Humidity:  $5 \div 85\%$
  3. Altitude:  $\leq 2\,000 \text{ m}$
  4. Occurrence of water: intermittent condensation of water or occurrence of water vapor
  5. Occurrence of foreign bodies: amount and type of dust are not significant
- Protection class: IP20

- Other characteristics of the operating environment (mechanical stress - shocks and vibrations, occurrence of plant, animals, weather effects) are negligible in terms of effect on the correct and safe use of electrical equipment.

### 1.3 Electrical safety

- Before connecting the appliance to the power supply for the first time, make sure that the voltage on the appliance label corresponds to that of the household electrical socket.
- The electrical appliance is designed for mains supply 230 V ~.  
The electrical safety of the appliance is guaranteed only if it is properly connected to the electricity grid.
- Only use a power cord with a plug (mains lead) that came with the device and compatible with a wall socket. Using another cable may result in fire or electric shock.
- Always connect an electrical appliance to an easily accessible power socket. In the event of an operating fault, the appliance must be switched off as soon as possible and disconnected from mains supply.
- Do not pull the power cord / power cord by pulling on the cord / cord. Disconnect the power cord by pulling the plug behind the power cord / power cord plug.
- If you use an extension cord, check that the total rated (ampere) power of all devices connected to the extension cord does not exceed the maximum current rating of the extension cable.
- If you need to use an extension cord or power supply block, make sure that the extension cord or power pack is plugged into a power socket, and not to another extension cord or power supply. Extension power cord or power supply block must be designed for grounded plugs and plugged into a grounded socket.
- The power plug of the appliance must be compatible with the mains socket. Never use any adapters or modify the socket in any other way. Do not use inappropriate or damaged sockets.
- To avoid electrical shock, plug the power cables into properly grounded electrical sockets. If the device is equipped with a 3-pin power supply cord, do not use adapters that do not have a grounding element or remove the grounding element from the plug or adapter.
- Do not bend, crush or otherwise expose the power cord / power cord of the appliance to mechanical stress or external heat sources. Damage to the power cord may result in electric shock.
- If the power cord is damaged, disconnect the appliance from the mains and do not use it again. If the power cord / power cord is damaged, it must be replaced by the manufacturer, its service department, or a qualified person to avoid the risk of electric shock.
- Regularly check and maintain the electrical appliance as well as the power cable. Disconnect the power plug regularly and clean it if necessary. Pollution by dust or other substances may cause disruption of the insulating state and consequently fire.

- Do not expose the appliance to water or moisture. The ingress of water into the appliance increases the risk of electric shock. If the power cord is wet or the appliance gets water, disconnect it immediately from the mains. If the appliance is plugged into a mains socket and if possible, turn off the power supply before attempting to disconnect the power supply. If you are pulling wet wires from a live power source, be very careful.
- If the electrical equipment is installed (connecting) the protective covers are dismantled, the electrical parts must not be accessible to the user when the installation is finished.

#### **1.4 Safety of persons**

- This appliance is intended for use by persons without an electrotechnical qualification (layperson) according to the instructions specified by the manufacturer.
- Device operation includes activities such as switching on and off, user manipulation and setting of operating parameters, visual or auditory inspection of the equipment, and user cleaning and maintenance.
- This appliance can be used by children 8 years of age and older and persons with reduced physical, sensory or mental abilities or lack of experience and knowledge only when under the supervision or guidance of the responsible person have been instructed to use the appliance in a safe way and understand the potential hazards .
- Cleaning and user maintenance can be carried out by children 8 years of age and older only under the supervision of the responsible person.
- Children may not play with the appliance.
- Always keep the appliance out of reach of children during use and operation. Be sure to download the appliance even for a freely accessible power cord.
- Always be careful when operating the electric appliance. Do not use an electric appliance if you are overly tired, under the influence of medication or narcotic drugs that reduce attention and focus. Inattention during operation may result in serious injury.

## 1.5 Cleaning, maintenance and repairs

- Observe the normal user cleaning and maintenance of the device in the recommended way. Do not use solvents or harsh cleaners for cleaning. Pollution and visible stains from finger contact, respectively. The hands can be cleaned using detergent detergents specially designed to clean household devices.
- If you do not use the device, clean it or disconnect the device from the power supply when the device is faulty.
- Electrical devices that are cleaned after use and are not intended to be completely or partly immersed in water or other liquid, protect against the effects of dripping and / or splashing water and before immersion.
- Electric household devices, like all other technical devices, are subject to the surrounding environment and natural wear. Since the legal framework of regular maintenance is not laid down for lay-in electrical household devices, the manufacturer recommends that the user have the device checked and cleaned at least once a year by a specialist workshop.
- By doing so, it is possible to achieve safety, operational reliability and increased service life.
- Do not disassemble the electric device! The device works with a dangerous voltage. For this reason, always switch off the device and disconnect it from the mains supply during user maintenance. In the event of a fault, please have the repair serviced by an authorized service center.
- Before calling a service:
  1. Turn the device off and on to make sure the fault reappears.
  2. If the malfunction of the device still persists after these operations, call the nearest specialist service center.
- Never repair the electric device yourself!
- Unauthorized, unqualified and improper use of an electric device may result in electric shock or other serious injury.
- Only carry out the warranty or post-warranty repair of an electrical device to an authorized qualified person (\*).

(\*) Competent qualified expert: the sales department of the manufacturer or importer or the person qualified and authorized to carry out this type of activity with the ability to avoid all risks.

## 2. Special Safety Instructions. Read carefully!

- Electrical equipment is designed and manufactured in such a way as to allow for safe operation and use by persons without a professional qualification. Despite all the measures that have been carried out by the manufacturer for safe use, handling, entails certain residual risks and associated potential hazards.
- To warn of possible hazards, the following symbols and their meanings have been used on the device and in the accompanying documentation:



This symbol alerts users that the device is operating with dangerous electrical voltage. Do not remove protective covers on the device.

Failure to observe the safety instructions during use and operation of the device may result in:

Danger of electric shock!

Danger of serious injury or life threatening!



This symbol alerts users to the following: Risk of serious injury or life threatening when not following the safety instructions when using and operating the unit!

Danger of damage to equipment or other damage to property!



Do not use the device near water, bath tub or shower and do not expose it to moisture. As a result of equipment fall into the water and electric shock, life threatening!



The device is not suitable for cleaning under running water.



This symbol means that the product is equipped with circuits in which the highest electrical voltage does not exceed the permissible values of the low safe voltage.

With such a device, electric shock cannot occur when touching live parts during normal operation, nor when touching non-live parts when the device malfunctions.

### Transport/Carriage

- When transporting and using, for example, of the transport cart, be careful when moving, to prevent overturning and damage to the machine. Do not transfer the device until the power supply has been disconnected. Do not carry the appliance by an electric cord. There is a risk of serious injury or life threatening! There is a risk of damage to the device!

## **Unpacking/Package**

- Unpack the equipment and accessories before putting it into service and remove all parts of packaging material, stickers and labels. Store the packaging materials on secure place or keep out of the reach of children and inappropriate persons.  
There is a risk of serious injury! Risk of suffocation!

## **Check/Commissioning**

- We recommend performing both initial and subsequent regular machine inspections. Use the device only with accessories and spare parts supplied and approved by the manufacturer.
- Never use the appliance if it is incomplete, damaged, or if parts or accessories (eg. due to fall) have been damaged during use.  
There is a risk of electric shock! There is a risk of serious injury!
- Check and assemble the machine before operating it as described in „Before Use“.
- Never clean the device (body with electrical parts) and the power cord with the plug in a way that could cause the liquid to flow into the device.  
Clean these parts with a damp cloth and wipe dry or let it dry.
- Only clean the appliance if it is switched off and disconnected from the mains. Keep the device clean and dry.

## **Warning!**

- If the device is suitable for cleaning under running water, this method must be explicitly specified in the operating instructions section: Cleaning and maintenance.
- If the device has been stored at lower temperatures, first acclimate it (about ½ and 1 hour) before further use to remove any moisture inside the enclosure, solidify the moving parts and preserve the mechanical strength of the plastic parts.

## **Operation/Supervision**

### **Warning!**

- This device may only be used with original and non-damaged parts and accessories. Use caution when using a device without a mounted comb attachment. Cutting blades are sharp and can cause serious injury.
- The device is designed for cutting/trimming free, clean and dry hair.
- Do not use a hair clipping/trimming device to cut animal hair.  
There is a risk of parasite transmission from animals to humans!
- Take special care about the possible transmission of parasites among persons, and keep the equipment in a clean and hygienic state. After each use, always clean the device thoroughly.
- Always make sure that the person who is using the hair styling is always sitting on a suitable and sturdy chair and that the workplace is properly lit.  
There is a risk of serious injury!
- The device is intended for use without a connected power cord.
- Depending on the type, the device can be powered by a rechargeable built-in battery (charging is provided with AC/DC charging adapter) or replaceable batteries.



## **Safety instructions for the power supply.**

- Charging the built-in battery is only allowed with the original charger (charging AC/DC adapter) supplied by the manufacturer or with a charger approved by the manufacturer.
- If the charger cable or the charger is damaged, replace it immediately with an undamaged original or a new charger.
- Use and store the battery charger only in dry rooms at ambient temperatures  $+5 \div +40^{\circ}\text{C}$ .
- Do not attach the charging cable plug and the cable and do not connect it to the socket when you have wet hands, and the charger cable or the device itself is wet. Always dry hands, power cord and equipment dry with a dry cloth.

There is a risk of electric shock!

- Never push any conductive objects (eg screwdriver, etc.) into the connector (USB-C connector on the device) to connect the charger. There is a risk of electrical short circuit! There is danger of explosion!
- Make sure that the main switch of the device is set to „OFF” position before each connection of the battery charger to the power supply. If the main switch does not work, do not use the device.

## **Attention!**

- Never open or even disassemble the battery! Damage may result in electrical short-circuiting and releasing of harmful substances. In case of contact, seek medical advice
- The battery must not come into contact with fire and must not be exposed to direct sunlight or excessive heat. There is a danger of accumulators! There is a risk of fire!
- If the battery is damaged, have it replaced by a specialist workshop.
- Dispose of batteries in accordance with applicable regulations and provisions for disposal of electronic devices.
- Powering up the device with a rechargeable battery:
- The device comes with a non-fully charged built-in rechargeable battery.
- To achieve the maximum capacity and the longest battery life, the battery needs to be fully discharged and then charged to its maximum level (charging takes approximately 8 hours before first use). This procedure must be repeated for at least 3 cycles, always after the battery has been fully discharged.
- When charging the battery, follow these steps:
  - Turn off the main switch before charging the built-in battery.
  - To charge the built-in battery, the charging stand, which is part of the supplied accessories, is designed.
  - Plug the AC/DC adapter cable (USB-C) plug into the charging base connector.
  - Plug the charger cable (AC) plug into a 230V AC power socket.
  - When the power supply is connected, the charging/operating indicator light turns red.
  - When charging is completed, if the battery is fully charged, the charging / operating light - green - will illuminate.
  - Disconnect the charger cable (AC) plug from the wall socket. Disconnect the connector (USB-C) from the charging stand.

- The device's power supply (built-in battery) is ready and the device can be used.
- During use, the built-in battery will gradually discharge. For further use, recharge the battery as instructed.

### **Warning!**

- The device can also be used during charging of the built-in battery. In this case, connect the JACK charger connector directly to the connector on the device, and plug the AC plug into a power socket.
- Powering the device with replaceable batteries:
- Safety instructions for the power supply - for batteries.
  - Always store batteries out of reach of children. In case of battery swallowing, immediately seek medical advice.
  - Wipe the battery with a dry cloth before inserting it into the machine. This will ensure a better electrical contact.
  - Only use the manufacturer's specified battery type. Do not use new batteries together with old ones. This may result in damage to the device.
  - Insert the batteries to match the „+“ and „-“ symbols on the batteries and on the inside of the battery compartment cover.
  - Do not handle the batteries with metal tools (eg tweezers, etc.). Conductive contact between the two poles of the battery may cause a short circuit.
  - If you are not using the device for a long time, it is recommended to remove the battery from the device. This protects your device from damage from leaking batteries.
  - Carefully store the used batteries so that children can not swallow them.
  - Dispose of batteries in accordance with applicable regulations and provisions for disposal of electronic devices.

### **Caution!**

- In case of improper handling, the batteries may explode.
- Do not charge, disassemble, or even throw into the fire.
- If affected, seek medical advice.
- Always keep your device under control during use and operation!
- This device is not intended to be operated by a programmer, an external time switch or a remote control, because there is a risk of fire when covered or incorrectly positioned.
- The electrical socket and power cord must remain easily accessible for safe disconnection of the device from the power supply.

### **Warning!**

- The appliance and the power cord must not be left unattended when connected to a power supply!
- Never leave the appliance unattended and freely accessible and do not leave it with a freely accessible power cord.  
There is a risk of electric shock! There is a risk of serious injury!
- Do not place the appliance:
  - on the edges of tables or parts of furniture,
  - to unstable or uneven surfaces,
  - on dirty surfaces,
  - near containers containing water and other liquids.

- Do not expose the device to:
  - direct sunlight, sources of excessive heat,
  - vibration and mechanical stress,
  - polluting chemicals,
  - water and excess moisture,
  - insect,
  - aggressive environmental influences.

There is a risk of serious injury!

There is a risk of damage to equipment or other property damage!

- Compose and disassemble parts and accessories and clean the appliance only when the appliance is disconnected from the power supply.
- Do not use or place the appliance in a place where children may freely reach.
- Prevent children from playing with the device.
- Mechanical damage (breakage or breakage of parts and covers) of the device can cause serious injury. Do not use damaged equipment and accessories.

There is a risk of serious injury!

There is a risk of damage to equipment or other property damage!

- Do not use or place the appliance near water containers. If the appliance falls into the water, take it to a specialist service to check if it is safe and working properly.

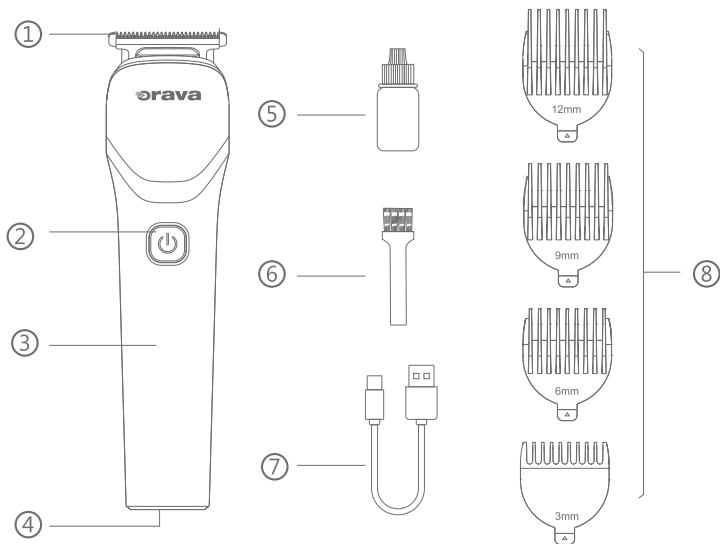
There is a risk of electric shock! There is a risk of electrical short circuit!

- Do not insert or allow the foreign bodies to enter the holes of the device covers.
- Do not cover the openings of the airflow covers. Air ventilation ensures proper operation, reliable and safe operation of the device.
- Never overload the equipment beyond the limits specified by the technical specifications!
- Observe the operating mode of the device (operating time / operation and breaks) in accordance with the operating and instruction manual. Regularly clean the device - empty from hair and dirt. Pollution of the device may result in a decrease in operating parameters and possible subsequent damage.
- After multiple cleaning of the device, especially cutting knives, treat the blades with a few drops of silicone oil (attached to the machine). Regular care helps you achieve better operator results and longer lifetime reliability.
- If you notice any unusual occurrences (sounds, smell, smoke, ...) while using the device, switch off the device immediately and disconnect it from the power supply. Have the appliance checked by a specialist workshop.
- If any safety component (mechanical, electrical) is part of the device, never disable this part / component! If the safety component is damaged or not working, do not use the appliance!

Never underestimate the potential hazards and take extra caution!!

# Operation

## Device description:



1. shearing knives
2. on and off button
3. LED indicator
4. USB-C connector for charging the battery
5. lubricating oil
6. cleaning brush
7. USB-C charging cable
8. comb extensions (3 to 12 mm)

# Preparation

## Charging:

### 1 Charge the device before using it for the first time.

Connect the USB-C connector of the supplied cable to the power USB-C connector on this device (4) and the other USB connector to the USB connector on the optional AC adapter (DC output voltage 5V, 1000mA) or to the USB connector on the powered-on PC. Plug the AC adapter into an electrical outlet.

- 2 During charging, the LED indicator (3) will glow red. After the battery is fully charged, the LED indicator (3) will glow permanently white. Disconnect the device from the charging source and you can use it. The discharged battery is signaled by the LED indicator (3) flashing red.



The first maximum charge takes about 1.5 hours (depending on the charging source). With fully charged batteries, the device can work for approx. 90 minutes. To achieve optimal battery condition, use the device for the first three cycles until the batteries are fully discharged, then always charge them to the maximum.

## Warning!

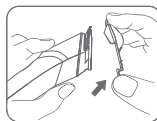
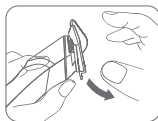
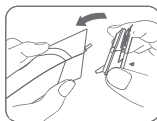
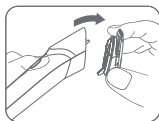
You can use the device even while it is charging. In this case, connect the AC adapter directly to the connector on the machine.

## Before use

- Make sure the device is clean and functional.
- Place the desired comb attachment on the device.  
***Attach and fold the attachment only when the device is switched off! Injury or damage to the device may occur.***
- Put a towel around the neck of the person you are going to cut, so that the hair does not fall on the clothing.
- The person you will be cutting should sit on a chair so that you have good access to all the hair on the head.
- Hold both the comb and clipper loosely when cutting to achieve a smooth and even cut.
- Cut only natural human hair. Cut hair must be clean and dry.
- Cut only small amounts of hair. If you try to cut a large volume of hair at once, the cutting will not be effective.

# Cutting hair

1. Attach the comb attachment to the cutting blades of the device. Place the attachment on the blades on the device and push the back of the comb until the comb clicks and stays fixed.



- If you want to cut the hair to a minimum length, fold the comb attachment.
2. Turn on the clipper with the on/off button (2) and cut the hair. Follow the indicated cutting procedure.
  3. Press the button (2) to turn on the device, the LED indicator (3) will glow white.
  - 4 After use, press the button (2) to turn off the device.

## Cutting procedure

Cut short lengths of hair in short increments before starting to cut the length evenly according to the appropriate comb attachment.

- Use the comb attachment.
- Do not force the clipper during cutting.
- Start cutting with the comb attachment.
- Hold the clipper lightly with the attachment on the clipper head facing up.

Proceed slowly according to fig. 1 from bottom to top.

- Repeat the procedure on the back of the head from bottom to top (fig. 2).
- After shortening the hair, change the length of the extension and proceed repeatedly from bottom to top when cutting.
- This method is guaranteed to be of better quality than starting cutting immediately with a shorter cutting length set.
- The cutting procedure on the sides of the head is the same as on the back of the head - from bottom to top (fig. 3).
- On the top of the head, work from front to back using the longer cut length and later the shorter cut length set on the comb clipper attachment. The teeth of the comb attachment point upwards (fig. 4).



fig. 1

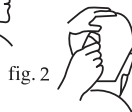


fig. 2



fig. 3



fig. 4

## Line alignment

- You don't need a comb attachment to straighten hairlines.
- Remove the comb attachment from the clipper.
- Align the hair near the ear to the desired line (fig. 5).
- Make sure the clipper is flush with the hairline.
- Align the hair on the back of the neck by turning the trimmer downwards and aligning the hair regularly towards the ear (fig. 6).
- Similarly, you cut the hair on the back of the neck. Work from top to bottom with the clipper facing down.



fig. 5



fig. 6



fig. 7



fig. 8



fig. 9

## Short cut

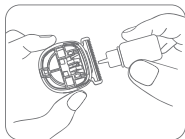
- You start cutting again at the back of the head from bottom to top. Slowly proceed to the top of the head (fig. 7).
- On the top of the head, proceed from front to back (fig. 8).
- For precise trimming (creating the hairstyle), use a comb to comb through the hair, and cut off part of the hair on the comb with a clipper (fig. 9).

## After cutting

After finishing operation, clean the clipper from hair with the supplied brush.

## Cleaning and oiling

- Your clipper has been carefully tested, the clipper blade oiled and adjusted and packaged before shipping from the factory.
- If the knife is not evenly oiled, drop a few drops of the supplied silicone oil on it. When oiling, proceed as follows:
  1. Turn off the device.
  2. Brush the knives from hair using a cleaning brush.
  3. Put one or two drops of oil on the knives.



4. For better use of the device, we recommend that you clean the device regularly, otherwise it will affect the performance and service life of the device.

### Warning!

#### **Never soak the AC adapter in water or other liquid when cleaning!**

Clean the device and AC adapter with a dry cloth slightly moistened with water. Do not use any harsh detergents or solvents such as alcohol, benzine or thinner for cleaning.

### **Replacement of accumulators**

The device is powered by a built-in battery. If the device works for a significantly shorter time after the maximum charge, the battery will need to be replaced. Ask the seller or an authorized service center about the possibility of exchange

**er no circumstances replace them with normal batteries yourself!**

### **General safety warnings for accumulators**

- Store batteries out of the reach of children. If they are swallowed, seek medical attention immediately.
- Wipe the batteries with a dry cloth before inserting them. This will ensure good contact.
- When inserting the battery, check the correct polarity.
- Do not put the batteries in contact with metal objects. A short circuit may occur.

### Warning!

The battery can explode if handled incorrectly. Do not disassemble batteries or throw them into fire.

Dispose of them in accordance with applicable local regulations and standards.



# Technical specifications

<b>Power supply:</b>	Li-ion battery, 1 200 mAh, 3.7 V
<b>AC adapter (not supplied):</b>	input: 230 V~ 50 Hz, 5 W output: 5 V/1000 mA
<b>Protection class:</b>	III
<b>Dimensions (w x h x d):</b>	4 x 15,5 x 4 cm
<b>Weight:</b>	145 g
<b>Noise level:</b>	60 dB (A)

The declared value of the noise emission of this appliance is 60 dB (A), which represents level A of the acoustic power with respect to the reference acoustic power of 1 pW.

## **Supplied accessories:**

cleaning brush, 4 comb attachments, oil

The right to make changes reserved!

**Producer:**

ORAVA retail 1, a.s.  
Seberínho 2  
821 03 Bratislava  
Slovenská republika

**Importer:**

ORAVA retail 1, a.s.  
Seberínho 2  
821 03 Bratislava  
Slovenská republika

ORAVA distribution CZ, s.r.o.  
Ostravská 494  
739 25 Sviadnov  
Česká republika

**INSTRUCTIONS AND INFORMATION REGARDING THE DISPOSAL OF USED PACKAGING**

Dispose of used packaging material at a municipal waste disposal site.

**DISPOSAL OF USED ELECTRICAL AND ELECTRONIC EQUIPMENT**

This symbol on the products or in the accompanying documents means that used electrical and electronic products should not be mixed with general household waste. For proper disposal, recovery and recycling, please return these products to designated collection points. Alternatively, in some countries of the European Union or other European countries, you may return your products to your local retailer when purchasing an equivalent new product. By ensuring this product is disposed of correctly, you will help prevent potential negative consequences for the environment natural resources and help prevent potential negative effects on environment and human health, which could be the consequences of improper disposal waste. Contact your local authority or nearest office for more details collection point. Improper disposal of this type of waste may result in penalties in accordance with national regulations.

**For business entities in the countries of the European Union**

If you wish to discard electrical and electronic equipment, please request the necessary information from your seller or supplier.

**Disposal in other countries outside the European Union**

This symbol is valid in the European Union. If you wish to discard this product, please request obtain the necessary information on the correct method of disposal from the local authorities or from the your supplier.

**DISPOSAL OF BATTERIES**

Batteries contain substances harmful to the environment and therefore do not belong in normal household waste. Hand them over for disposal in accordance with applicable regulations and standards at their take-back locations.



This product complies with all the essential requirements of the EU directives that apply to it.