

Dehumidifier

**orava**

# Dehum 1

Instruction manual

EN



CE

Dehum

## **Intended use of the device**

The device is designed exclusively for the treatment of humidity and distribution of humid air in enclosed living spaces, to the extent specified by technical and operational parameters and functions, safety and user instructions and external influences of the operating environment.

ORAVA electrical appliances are manufactured according to the knowledge of the current state of technology and recognized safety and technical rules. Nevertheless, incorrect and unprofessional use or use contrary to the intended purpose may create a risk of injury or endanger the life of the user or a third party, resp. damage to equipment and other property.

### **1. GENERAL SAFETY INSTRUCTIONS AND WARNINGS**

- This document contains important safety instructions and warnings for safe, correct and economical operation of the electrical equipment. Its compliance helps the user avoid risks, increase reliability and product life.
- In this document, the general term product is used in text parts such as: electrical equipment - any device used for the production, conversion, transmission, distribution or use of electricity.
- From the point of view of the purpose of using electricity, the concept of electrical equipment in the strict sense of the word will include the following categories:
  - household electric appliances,
  - information and communication equipment,
  - consumer electronics,
  - lighting equipment,
  - electrical and electronic tools,
  - toys and equipment for sporting and recreational purposes,
  - medical devices (aids),
  - monitoring and control devices,
  - vending machines.

#### **1.1 General safety instructions**

- Before operating the unit, we recommend that you carefully read the instruction manual and operate the equipment in accordance with the instructions!
- The safety instructions and warnings in this manual do not cover all the possible conditions and situations that may arise when using the device. The user must understand that a factor that cannot be incorporated into any of the products is personal responsibility and caution. These factors must therefore be ensured by users serving this device.
- Failure to follow the safety instructions and warnings is forbidden by the manufacturer for any damage to health or property!
- Keep the instruction manual as close to the device as possible throughout its service life. Always keep the instruction manual together with the appliance for future use and use by new users.
- Use the appliance only for the intended purpose and in the manner specified by the manufacturer.
- The appliance is intended for home and similar indoor use without special focus.

- This appliance is intended, in addition to domestic use, for the following uses:
  - in shops, offices and other similar work environments;
  - in economic buildings;
  - in hotels, motels and other residential environments;
  - in bed and breakfast establishments.
- It is not a professional device for commercial use.
- Do not change the technical parameters and features of the device by unauthorized modification or modification of any part of the device.
- The manufacturer is not responsible for damages caused during transportation, misuse, damage or destruction of the equipment due to adverse weather conditions.

## **1.2 Safety of the operating environment**

- Do not use the device in an industrial environment or outside environment!
- Do not expose the appliance to:
  - sources of excessive heat or open flame,
  - dripping or splashing water,
  - vibration and excessive mechanical stress,
  - insects, animals and plants,
  - aggressive and chemical substances.
- The operating environment of the device must always be in accordance with the basic characteristics set out.
- Features of the operating environment:
  1. Ambient temperature:  $+5 \div +40$  ° C
  2. Humidity:  $5 \div 85\%$
  3. Altitude:  $\leq 2\,000$  m
  4. Occurrence of water: intermittent condensation of water or occurrence of water vapor
  5. Occurrence of foreign bodies: quantity and type of dust are insignificant
  6. Protection degree: min. IP20 (device protected from touching dangerous parts by hand and non-waterproof)
- This degree of protection is not indicated on the product and on the technical parameters in the operating instructions.
- If the protection class of the product is different from IPX0, this information is then displayed on the label of the appliance or in the technical data of the operating instructions.
- Other characteristics of the domestic operating environment (mechanical stress - vibrations and vibrations, occurrence of plant, animals, weather effects ...) are negligible in terms of effect on the correct and safe use of electrical equipment.

### 1.3 Electrical safety

- Before connecting the appliance to the power supply for the first time, make sure that the voltage on the appliance label corresponds to that of the household electrical outlet.
- The electric appliance is designed to power from 1 / N / PE ~ 230 V 50 Hz.
- The electrical safety of the appliance is guaranteed only if it is properly connected to the mains.
- Electrical protection class I equipment is equipped with a protection against electric shock by means of protective earthing of inanimate parts, which can become dangerous when the device is malfunctioning. Always connect such devices to properly installed mains sockets that are equipped with earthing conductors and have a properly grounded earthing conductor.  
All electrical equipment is equipped with a three-wire power supply.
- Class II electrical equipment is protected against electric shock by double insulation or by enhanced insulation of hazardous live electrical parts. Device of protection class II it must not be equipped with means to connect protective earthing.  
All electrical equipment is equipped with two-wire power supply.
- Class III electrical equipment is a device that is powered by a small safe voltage source (battery or accumulator) and does not present any danger to the user from electrical shock.
- In order to provide increased safety against the risk of electric shock due to the use of electrical appliances by laypersons, it is recommended to install the power supply circuit for sockets with a rated current not exceeding 20 A RCD with a rated operating current not exceeding 30 mA.  
To ensure the safety and correctness of the electrical installation, consult a qualified electrician.
- Only use a power cord with a plug (mains lead) supplied with the device and compatible with a wall socket. Using another cable may result in fire or electric shock.
- Always connect an electrical appliance to an easily accessible mains socket. In the event of an operating fault, the appliance must be switched off as soon as possible and disconnected from mains supply.
- The power cord and mains plug must always be easily accessible for safe disconnection of the electrical appliance from the power supply.
- Do not pull off the power cord by pulling the cable. Disconnect the power cord by pulling the plug behind the power cord plug.
- If you use an extension cord, make sure that the total rated power of all devices connected to the extension cord does not exceed the max. current load on the extension cable.
- If you need to use an extension cord or power supply block, make sure that the extension cord or power pack is plugged into a power socket, and not to another extension cord or power supply. The extension power cord or power supply block must be designed for grounded electrical plugs and connected to a properly grounded electrical socket.
- The power plug of the appliance must be compatible with the mains socket. Never use any adapters or modify the socket in any other way. Do not use inappropriate or damaged drawers!
- To avoid electrical shock, plug the power cables into properly grounded electrical sockets. If the device is equipped with a 3-pole plug, do not use adapters that do not have a grounding element or remove the grounding element from the plug or adapter.

- Do not bend, crush or otherwise expose the power cord of the appliance to mechanical stress or external heat sources. Damage to the power cord may result in electric shock.
- When the power cord is damaged, disconnect the appliance from the mains and do not use it again.
- If the power cord is damaged, it must be replaced by the manufacturer, its service department or a similarly qualified person to avoid the risk of electric shock.
- Regularly check and maintain the electrical appliance as well as the power cord and power socket. Disconnect the power plug regularly and clean it if necessary. Pollution by dust or other substances may cause disruption of the insulating state and consequently fire.
- Do not expose the appliance to water or moisture. The ingress of water into the appliance increases the risk of electric shock.  
If the power cord is wet or the water has penetrated the water, disconnect it immediately from the mains. If the appliance is plugged into a mains socket and if possible, turn off the power circuit before attempting to unplug the power. If you are pulling wet wires from a live power source, be very careful.
- If the electrical equipment is installed (connecting) the protective covers are dismantled, the electrical parts must not be accessible to the user when the installation is finished.

#### **1.4 Safety of persons**

- This appliance is intended for use and operation by persons without electrotechnical qualification - lay people, according to the instructions specified by the manufacturer.
- Device operation includes activities such as switching on and off, user manipulation and setting of operating parameters, visual or auditory inspection of the equipment, and user cleaning and maintenance.
- This appliance can be used by children under the age of 8 and persons with reduced physical, sensory or mental capabilities or lack of experience or knowledge when supervised or instructed to use the appliance safely and understand the dangers involved.
- Children may not play with the appliance.
- Cleaning and maintenance for users may not be performed by children unattended.
- Always keep the appliance out of reach of children during use and operation. Be sure to unplug the appliance even for a freely accessible power cord.
- Always be careful when operating the electric appliance! Do not use an electric appliance if you are overly tired, under the influence of medication or narcotic drugs that reduce attention and focus.
- Inattention during operation may result in serious injury.

## 1.5 Cleaning, maintenance and repairs

- Observe the normal user cleaning and maintenance of the appliance in the recommended way. Do not use solvents or harsh cleaners for cleaning. Pollution and visible stains from finger contact, respectively. The hands can be cleaned using detergent detergents specially designed to clean household appliances.
  - If you do not use the appliance, clean it or disconnect the appliance from the power supply when the appliance is faulty.
  - Electrical appliances that are cleaned after use and are not intended to be completely or partly immersed in water or other liquid, protect against the effects of dripping and / or splashing water and before immersion.
  - Electric household appliances, like all other technical devices, are subject to the surrounding environment and natural wear. Since the legal framework of regular maintenance is not laid down for lay-in electrical household appliances, the manufacturer recommends that the user have the appliance checked and cleaned at least once a year by a specialist workshop.
  - By doing so, it is possible to achieve safety, operational reliability and increased service life.
  - Do not disassemble the electric appliance! The appliance works with a dangerous voltage. For this reason, always switch off the appliance and disconnect it from the mains supply during user maintenance. In the event of a fault, please have the repair serviced by an authorized service center.
  - Before calling a service:
    1. Turn the appliance off and on to make sure the fault reappears.
    2. If the malfunction of the appliance still persists after these operations, call the nearest specialist service center.
  - Never repair the electric appliance yourself!
  - Unauthorized, unqualified and improper use of an electric appliance may result in electric shock or other serious injury.
  - Only carry out the warranty or post-warranty repair of an electrical appliance to an authorized qualified person <sup>(\*)</sup>.
- (\*) Competent qualified expert: the sales department of the manufacturer or importer or the person qualified and authorized to carry out this type of activity with the ability to avoid all risks.

## 2. SPECIAL SAFETY INSTRUCTIONS. READ CAREFULLY

- The electrical device is designed and manufactured in such a way as to allow safe operation and use by persons without professional qualifications. Despite all the measures taken by the manufacturer for safe use, operation and use, there are certain residual risks and the associated hazards.
- The following symbols and their meanings have been used on the device and in the accompanying documentation to warn of possible dangers:



This symbol alerts users to the fact that the device operates on hazardous electrical voltage. Do not remove the protective covers on the device. Failure to observe the safety instructions for the use and operation of the device may result in:  
Danger of electric shock! Danger of serious injury or death!



This symbol alerts users to the risk of serious injury or death if the safety instructions for the use and operation of the device are not observed!  
Danger of equipment damage or other property damage!



This symbol alerts users to the risk of failure to observe the safety instructions for the use and operation of the device: This unit uses flammable refrigerant!  
If the refrigerant leaks and comes into contact with a fire or heating part, it will generate harmful gases and there is a risk of fire!

### Transport/Carrying

- Only transport / transport the device after a thorough inspection of the area and the route, which must be unobstructed.
- Never carry the device while it is in operation. Do not carry the device while it is connected to the mains.
- When carrying, make sure that your hands and the device are not wet or slippery. Danger of serious injury or death!  
Danger of damaging the device!

### Unpacking/Packaging

- Before putting the device into operation, unpack the device and dispose of all its parts and accessories with residues of packaging materials, labels and tags. Keep all packaging materials in a safe place or keep them out of the reach of children and incompetent persons.  
Danger of serious injuries!  
Danger of suffocation!

## **Inspection/Commissioning**

- Never use the device if it is incomplete, damaged or any part of it has been damaged during use. Have the device repaired by a specialist garage.  
Danger of serious injuries!
- Children under the age of 3 must be denied access to the appliance unless they are constantly supervised.
- Children from the age of 3 and under the age of 8 must not plug, regulate or clean the device or perform maintenance by the user.

## **Caution!**

- Pay special attention if vulnerable people or children are present.
- The device may be used by children from 8 years of age and older with reduced physical, sensory or mental abilities or lack of experience and knowledge, provided they are supervised or instructed in the safe use of the device and understand the dangers involved. Children must not play with the device! Cleaning and maintenance that can be performed by the user must not be performed by children without supervision. Keep the device and its power cord out of the reach of people under the age of 8 when it is plugged in or cold.
- The device is intended for household use.
- Do not use the device in an industrial environment or outdoors. This is not a professional device.
- Before connecting the device to the mains, make sure that the rated voltage indicated on the type plate of the device corresponds to the voltage in your socket.
- Only connect the device to a properly grounded socket.
- Do not leave the device unattended when it is connected to the mains.
- If your hands are wet or damp, do not touch the device that is connected to an electrical device.  
There is a risk of damage to the device or other property damage!  
There is a risk of electric shock!  
Danger of serious injuries!
- Always unplug the device before switching it off for a short time or after use.  
There is a risk of damage to the device or other property damage!  
Danger of burns!
- The device must not be used if it has been dropped or if it shows visible signs of damage.
- Make sure that the power cord does not come into contact with water or a warm surface.
- Do not unplug the device by pulling on the power cord. This may damage the power cord or power socket. Unplug the power cord by pulling on the plug of the power cord.
- If the power cord is damaged, have it replaced by a qualified service center. It is forbidden to use the device with a damaged mains cable or mains plug.
- Do not use extension cords or adapters with the device.
- If you notice anything unnatural, such as a burn odor, turn off the device and unplug it.
- To avoid the risk of electric shock, do not repair or modify the device yourself. Have all repairs carried out by an authorized service center. By interfering with the product, you run the risk of losing the legal right from incorrect performance, or quality guarantees.  
There is a risk of damage to the device or other property damage!  
There is a risk of electric shock!  
Danger of electrical short circuit!



## **Location/Installation**

- The device must be used and stored on a stable surface.
- Always make sure that the place where you want to place the device has sufficient space, stability, mechanical strength.

## **Warning!**

- Do not place the device:
  - on uneven and unstable surfaces
  - close to heat sources (oven, kettle, etc.)
  - in direct sunlight
- If the device has been tilted by more than 45 ° before operation, leave it in an upright position for at least 24 hours before commissioning.
- Do not partially cover the device. Do not block air inlets or outlets with linen, clothing, curtains, or the like.
- Do not place any objects on the device.
- Do not place liquid containers on the device.
- Do not hang other objects on the device.
- Do not climb, sit, or lean on the device, or place heavy objects on it.
- Do not use flammable substances, such as hair spray, insecticides, etc., near the device.
- Do not tilt the device to prevent water from leaking out of the water tank.
- Do not expose plants or animals to direct airflow from the device.
- The device must not be placed in a dusty environment.
- There must be a space of at least 30 cm around the device.
- The temperature of the room in which you want to use the device must not be less than 5 °C or higher than 35 °C
- Do not direct the air stream at a fireplace or other similar heat source, as this may ignite.
- Do not install the device where flammable gases may escape.
- The device is intended for indoor use only.
- Install the device in rooms that exceed 4 m<sup>2</sup>.

## **Warning!**

- Do not allow children to manipulate (play with) the device. The device can tip over and cause very serious injuries. Mechanical damage (cracking or breaking of parts and covers) of the device can cause serious injuries. Danger of very serious injuries!

There is a risk of damage to the device or other property damage!

## **Keep the device under constant supervision during use and operation!**

- This unit is not intended to be operated by means of a programmer, external timer or remote control, as there is a risk of fire if the unit is covered or incorrectly positioned.
- Do not leave the device unattended during operation, especially if there are children, incompetent persons or animals near them.
- Do not use the device near flammable materials and objects, such as curtains, drapes, decorative fabrics, etc.  
There is a risk of fire!
- In normal use, always connect the device to the mains socket first and then switch it on with the main switch - regulator.
- When you have finished using the device, switch it off with the main switch - regulator and then pull the mains plug out of the mains socket.

## **Warning!**

- The electrical socket and power cord must remain easily accessible for safe disconnection of the device from the mains.
  - Never leave the device unattended and freely accessible with a free-hanging power cord. Children, incompetent persons or animals could pull the device by the power cord.
  - If you use the device where pets are kept, be careful do not let them wee or bite into the cable of the electrical device.
  - Do not store the device with the power cord wrapped around its body. „Fold the power cord“ loosely „as it was folded in the original packaging from the manufacturer.
  - Do not damage, reshape, bend, pull, twist the power cord, or use it if it is tangled. Also, do not place heavy objects on the power cord or puncture it.
  - Do not immerse the device, the mains cord and the plug-in water or other liquids to prevent damage or electric shock. Protect the device from direct contact with water or other liquids.
  - If the device will not be used for a long time, pull the mains plug out of the mains socket.
  - If you have severe respiratory or lung disease, consult your doctor before using a dehumidifier.
- Danger of serious injuries!

There is a risk of electric shock! Danger of electrical short circuit!

## **Cleaning/Maintenance**

Cleaning the outside of the device:

- Before cleaning, make sure that the power cord is unplugged.
- Do not use metal objects, petrol, thinners or abrasive cleaners, etc. for cleaning to avoid damaging the surface.
- To prevent possible electric shock, do not wash the device under running water, spray water on it, or immerse it in water or any other liquid.

Danger of serious injuries!

There is a risk of electric shock! Danger of electrical short circuit!

## **F-gas**

- The device contains fluorinated greenhouse gases:
  - Coolant: R290
  - R290 has no harmful effect on ozone paint (ODP), has a negligible greenhouse effect (GWP) and is available worldwide. Thanks to its energy-efficient properties, the R290 is very suitable as a cooling device for this device.
  - Special safety measures must be taken into account due to the high heat of the coolant.
  - The cooling unit is sealed. Repair may only be attempted by a qualified technician!
  - Never attempt to tamper with the cooling circuit or disassemble the product yourself, always consult a specialist.
  - The product or device contains fluorinated greenhouse gases that are tightly enclosed in a sealed system.
  - Do not discharge refrigerant into the atmosphere!
  - R-290 (propane) is flammable and heavier than air.
  - It collects first on low surfaces, but can be circulated by the fan.
  - The propane gas used in the equipment has no gas.
  - If propane gas is leaking or suspected, do not allow it to be removed by untrained personnel.
  - If a leak is detected, evacuate all persons from the room immediately, ventilate the room, and contact a local firefighter to report a propane leak.
  - Do not use naked flames, cigarettes or other possible sources of ignition near the device.
  - Components in the equipment are designed for propane and do not spark. Components may only be replaced with identical repair parts.
  - National standards for gaseous substances must be observed when handling the device.
- Danger of serious injuries!  
Failure to observe these precautions could result in explosion and death.

# Technical specifications

Power supply:	220 - 240 V~ 50 Hz
Max. power consumption:	395 W (30 °C, rel. humidity 80%)
Rated power consumption:	315 W (27 °C, rel. Humidity 60%)
Rated current load:	1.75 A (27 °C, rel. Humidity 60%)
Max. current load:	2.05 A (30 °C, rel. humidity 80%)
Dehumidification capacity:	12.4 l/day (27 °C, rel. humidity 60%) 25.0 l/day (30 °C, rel. Humidity 80%)
Water tank capacity:	4 l
Noise:	≤ 45 dB (A)
Refrigerant charge (type/volume):	R290/70 g
Maximum working pressure at suction/discharge side:	0.7 MPa / 3.2 MPa
Maximum allowable pressure at high/low pressure side:	3.2 MPa
Maximum allowable pressure heat exchanger:	3.2 MPa
Dimensions (W x D x H):	33.5 x 23 x 57 cm
Weight:	14.5 kg

Package Contents:      dehumidifier (1)  
                                 instructions for use (1)

The declared noise emission value of this appliance is ≤ 45 dB (A), which represents the sound power level A with respect to the reference sound power of 1 pW.

**We reserve the right to make changes!**

## Characteristics

The dehumidifier is used to remove excess moisture from the air. The resulting reduction in relative humidity protects buildings and their interior from the adverse effects of excessive humidity.

The ecological preparation R290 is used as a refrigerant. R290 does not have a detrimental effect on the ozone layer (ODP), has a negligible greenhouse effect (GWP) and is available worldwide. Due to its efficient energy properties, R290 gas is very suitable for this use as a refrigerant. Special safety precautions must be taken into account due to the high flammability of the coolant.

### Warning

This device uses flammable refrigerant.

If the refrigerant leaks and comes in contact with a fire or hot object, it will produce harmful gases and there is a risk of fire and explosion.

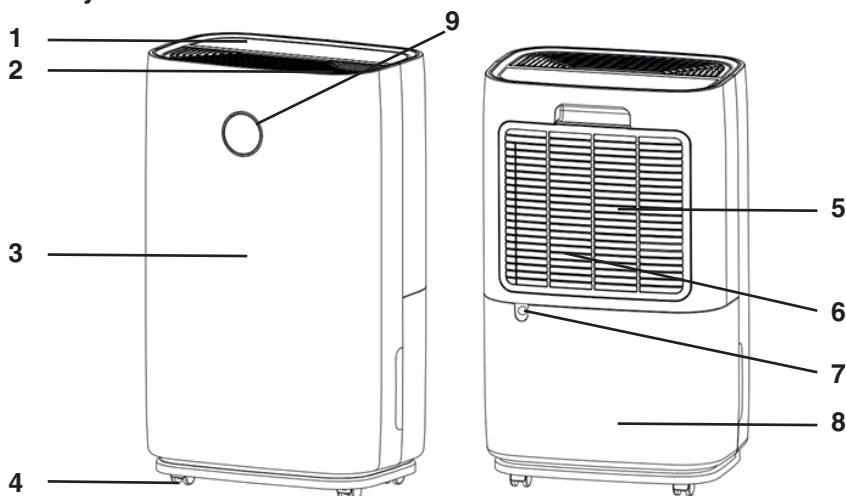
## Main functions and features:

- powerful dehumidification
- humidity monitoring shows the current humidity
- automatic mode automatically adjusts humidity levels
- 24-hour timer to set the operating time
- effective removal of moisture and dust from the air
- low energy consumption, energy efficiency
- silent fan with 2 speed settings
- automatic shutdown/automatic start
- electronic control
- laundry drying function
- ionization function
- antibacterial filter
- continuous drainage of precipitated moisture or into a 4 l water tank

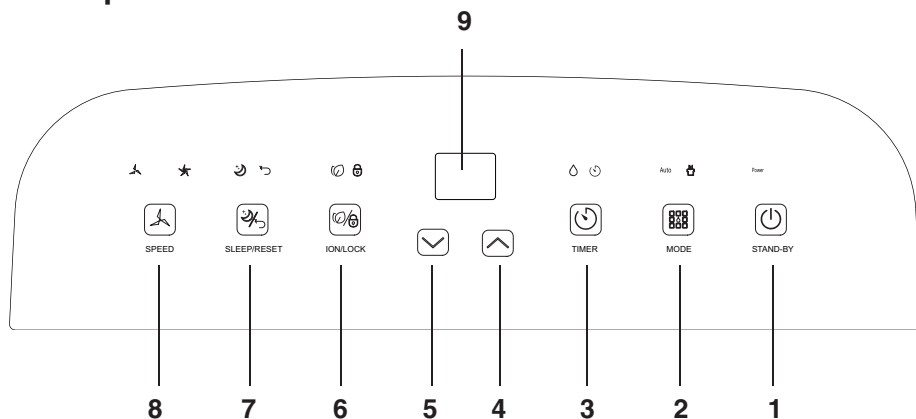
## Description of parts

### Device

- 1 Control panel
- 2 Exhaust air outlet
- 3 Front cover
- 4 Wheels
- 5 Top grille
- 6 Air filter
- 7 Continuous condensate drain connection
- 8 Water tank
- 9 Humidity indicator



## Control panel



### 1 **STAND-BY button**

Press to turn the device on or off.

### 2 **MODE button**

Press to select automatic and continuous dehumidification mode.

### 3 **TIMER button**

Set the time to turn the device on or off automatically.

### 4 **Increase button**

Increasing the desired temperature, humidity and timer time setting.

### 5 **Decrease button**

Reducing the desired temperature, humidity and timer time setting.

### 6 **ION/LOCK button**

Press and hold this button to activate or deactivate the child lock function.

Press this button to activate or deactivate ionization function.

### 7 **SLEEP/RESET button**

Press to turn sleep mode on or off.

Turn and hold this button to reset the filter counter.

### 8 **SPEED button (fan speed)**

Press to toggle the fan speed between high and low.

### 9 **Digital display**

Display of humidity values, timer settings or temperature.

# Assembly and operation

## Before first use

- Unpack the device and remove all packaging material and any protective film. If the wheels are not mounted, mount them on the bottom of the device.

## INSTALLATION

### Location

- Place the device on a solid and level surface in an area with at least 30 cm of free space around the device to ensure proper air circulation.
- Never install the device where it could be exposed to heat sources such as radiators, heat exchangers, stoves or other heat-generating products.
- Never install the device in an area where it may be splashed with oil or water, exposed to direct sunlight, mechanical vibration or shock, excessive dust, insufficient ventilation, such as in cabinets or bookcases, on uneven and unstable surfaces.

### WARNING!

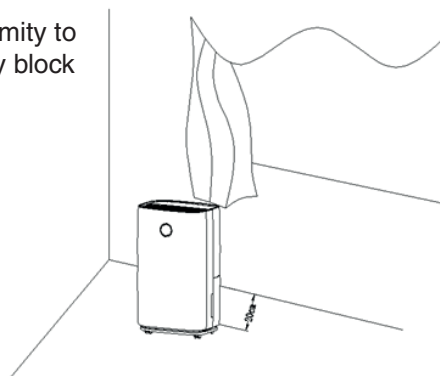
Only install the device in rooms with a floor area of more than 4 m<sup>2</sup>.  
Do not install the device in places where flammable gases could escape.

### NOTE

The refrigerant manufacturer can provide further information on the possible odor of the refrigerant.

## SAFE OPERATION OF THE DEVICE

- After unpacking, check the device for damage or scratches.
- Use this device in an ambient temperature of 5 °C to 35 °C.  
Do not use it outdoors. This dehumidifier is intended for indoor use only.
- Do not operate the device in close proximity to walls, curtains, or other objects that may block the air intake and exhaust vents.
- Keep air intake and exhaust vents unobstructed and unobstructed.
- Before starting, set the airflow deflector upwards.



- If the device has been tilted by more than 45 ° before operation, leave it in an upright position for at least 24 hours before commissioning.
- Keep doors and windows closed for greater energy savings.
- Do not operate or store the device in direct sunlight or rain.
- It is normal for the air vents to be hot to the touch after continuous operation on hot days.
- Empty the water tank before moving the device.
- Make sure that the water tank is installed correctly, otherwise the unit will not work properly.
- The dehumidifier starts in the mode selected when the device was last used.
- The dehumidifier starts dehumidifying if the humidity in the room is 3% higher than the set humidity.
- The compressor has a protective 3-minute time delay. Wait 3 minutes for the dehumidifier to resume dehumidification.

### Power supply

The device operates on AC voltage 230 V, 50 Hz from the mains.

Before using the device, it is necessary to connect the appliance to the mains using a mains cord to a wall socket with the prescribed voltage.

## SETTINGS AND OPERATION

Place the device in the desired location in the room and set its operation using the controls on the control panel.

Switch on the device using the STAND-BY button and use the other buttons to select its operating mode, fan speed, timer, etc.

### STAND-BY button

In standby mode, press to turn on the device.

The operation indicator lights up and the device starts operating. The fan speed is high.

In the on state, press this knob to turn off the device.

The operation indicator goes out and the compressor stops immediately. After a 30-second delay, the fan also stops running.

### MODE button

Press the MODE button to switch between automatic mode and drying mode (e.g. laundry).

### Automatic mode (AUTO):

In this mode, it is possible to set the humidity and fan speed.

### Drying mode (DRY):

In this mode, the compressor operates continuously without the possibility of humidity control. The fan runs at high speed (neither the fan speed nor the humidity can be adjusted).



### **SLEEP/RESET button**

When you press SLEEP/RESET, the indicator lights up and sleep mode is activated, which means that the unit turns off automatically after a certain period of time. Press and hold this button to reset the filter counter after replacing it.

### **TIMER button**

Press the TIMER button to set the timer function from 1 to 24 hours. Each time you press this button, the setting value increases by 1 hour, the set value is shown on the display.

When setting the timer on, the time after which the device will turn off automatically is set.

When setting the timer in standby mode, the time after which the device turns on automatically is set.

Setting the time to „00“ cancels the timer function.

### **SPEED button (fan speed)**

Press this button to toggle the fan speed between high and low. The corresponding indicator always lights up. In continuous drying mode, it is not possible to change the fan speed during sleep mode and defrost time.

### **ION/LOCK button**

Press and hold this button to activate or deactivate the child lock function. When the child lock function is activated, all controls are locked and the device cannot be operated with them. Press this button to activate or deactivate ionization function. The ionization function enriches the air with beneficial negative ions, eliminates dust and cleans the air in the room.

### **Humidity indicator - humidity indication**

The humidity in the room is indicated by colored lights: red: humidity more than 65%, green: humidity 45%-65%, blue: humidity less than 45%.

## **Maintenance and cleaning**

### **CONDENSATE DRAINAGE (DETERMINED WATER COLLECTION)**

There are two ways to remove water trapped by the dehumidifier.

#### **Manual removal:**

Manually remove the water tank and pour it out.

#### **Continuous condensate drain:**

Drainage of condensate by means of a drain hose into the sewer by gravity.

## MANUALLY EMPTYING THE WATER TANK

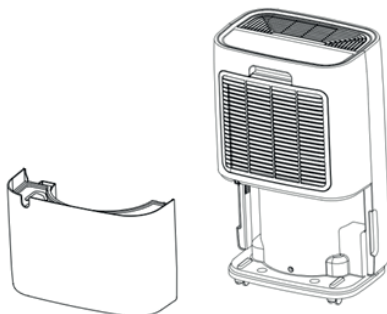
After filling the inserted water tank, the device stops.

Remove the tank and pour out the water. After re-inserting the tank correctly into the device, it will be possible to restart the device.

### Proceeding:

- When the tank is full, a buzzing sound sounds from the device and a message lights up „Water Full“.
- Press **STAND-BY** to turn off the unit.
- Remove the water tank by simply sliding it out of the dehumidifier body.
- Pour out water e.g. to the sink.
- Clean the inside of the tank and the outside.
- Properly insert the empty tank back into the device.
- Press the **STAND-BY** button to resume operation of the unit.

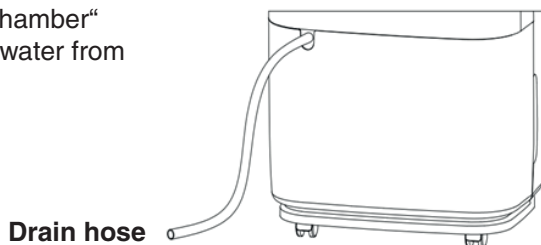
If operation does not start and the „Water Full“ indicator does not go out, check that the float is in place.



## CONTINUOUS DRAINAGE OF CONDENSATE

Connect the supplied drain hose to the device for continuous operation or unattended dehumidification. The condensate (trapped water) can then drain spontaneously into the sewer or into a designated container.

- Place the device on a horizontal surface in a stable position.
- Switch off the device before connecting the drain.
- Pull out the plug of the water outlet and store it in a safe place.
- Connect the drain hose securely and correctly to the water outlet and make sure that it is not kinked or blocked.
- Place the outlet end of the hose in the sewer, sink, etc. and ensure that the hose drops continuously so that water can drain freely by gravity from the device.
- Do not immerse the end of the hose in water otherwise it may cause an „air chamber“ to form in the hose and prevent water from flowing.



## How to prevent water leakage

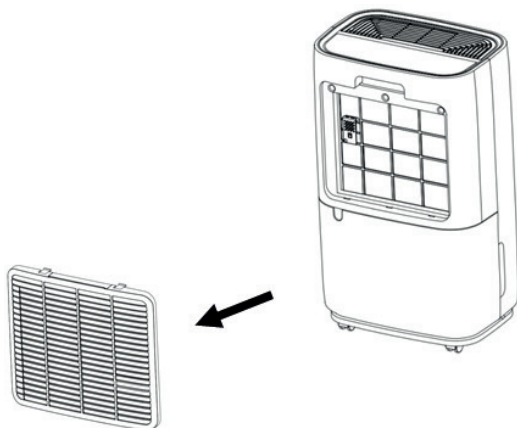
As the vacuum in the condensate drain platform is high, lower the drain hose down to the floor. It is suitable for the slope to be greater than 20 degrees. Wipe the hose so that it is not kinked at any point.

## CLEANING THE AIR FILTER (every two weeks)

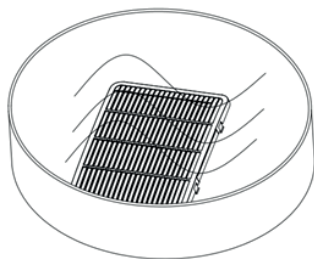
Dust accumulates on the filter, which in turn restricts airflow. Restricted airflow reduces the efficiency of the system and can damage the equipment if it is blocked.

The air filter requires regular cleaning. The air filter is removable for easy cleaning. Do not use the device without an air filter, as this could contaminate the evaporator.

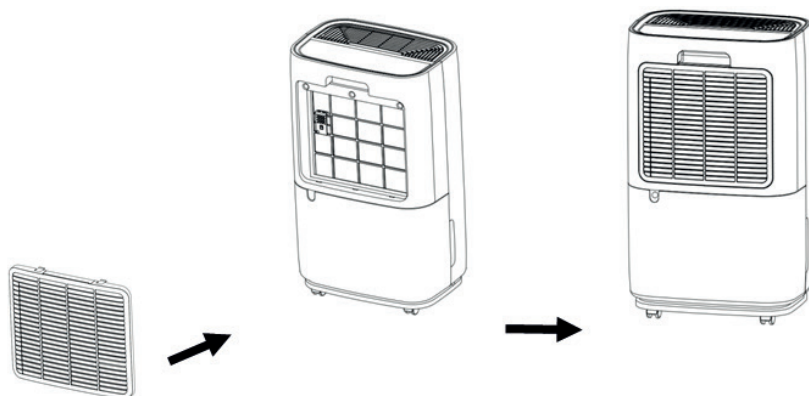
- 1 Remove the filter grille and pull out the filter.



- 2 Soak the filter in warm water approx. 40 °C. Wash it gently with a neutral detergent.  
Use a vacuum cleaner with a brush nozzle to gently remove dust from the filter.  
Allow everything to dry thoroughly.



- 3 Replace the filter and press and hold SLEEP/RESET reset the filter counter.



## TROUBLESHOOTING

### Effective operating temperature

The device effectively dehumidifies at a temperature ranging from 5 ° C to 35 ° C. If the ambient temperature is lower or higher than the effective operating temperature, the dehumidifier will stop working.

At an ambient temperature in the range of 5 ° C to 16 ° C, the compressor of the device performs automatic defrosting at certain intervals.

During such defrosting, the compressor will stop, but the fan will still run.

### BEFORE CONTACTING SERVICE

Before contacting a professional service, read the following fault overview, which contains common cases that are not a symptom of a fault.

Problém	Possible cause	Solution
The device does not work.	No power	Connect the cord to the working el. sockets.
	The Water Full indicator flashes	Pour out the water tank and reinsert it correctly.
	The ambient temperature is below 5 °C/above 35 °C.	Protective function of the device. The device does not work at this temperature.
Malfunction	Not clogged with air filter?	Clean the air filter according to the instructions.
	Suction is not blocked or blowing?	Clean the air filter according to the instructions.
No air supply	Is the filter clogged?	Wash the filter.

Noisy running	Is the device on a flat surface?	Lay the device straight area.
	Is the filter clogged?	Clean the filter.
E2 code	Humidity sensor problem	Replace the sensor.
LO code	Ambient humidity is below 20%.	The protection function switches off equipment.
HI code	Ambient humidity is above 90%.	
CL code	Protection against low temperature, ambient temperature is below 5 ° C.	
CH code	High temperature protection, the ambient temperature is above 35 ° C	

### Device body cleaning

- Disconnect the power cord from the electrical socket. Never wash the device under running water or immerse it in water.
- Clean the device and accessories with a soft cloth.  
Do not use solvents, thinners, alcohol or harsh cleaners for cleaning.
- The device must remain completely dry after cleaning.

# Storage and disposal of unnecessary equipment

## STORAGE

### Long-term storage:

If you will not be using the device for a long time (more than a few weeks), it is advisable to clean it and dry it completely.

Follow these steps to store your device:

- 1 Press STAND-BY to turn off the unit and unplug it.
- 2 Pour water out of the tank.
- 3 Clean the filter and let it dry completely in a shady place.
- 4 Place the power cord in the tank.
- 5 Insert the filter in its place.
- 6 The device must be in a vertical (standing) position during storage.
- 7 Store the device in a well-ventilated, dry place and a safe place indoors, in a non-corrosive environment.

## WARNING!

The evaporator inside the unit must be dried before storing the unit to prevent damage and mold. After unplugging the device, place it in a dry place for a few days to dry it.

The way to dry the evaporator is to set the humidity to more than 5% higher than the ambient humidity so that the fan is forced to dry the evaporator for several hours.

## DISPOSAL

The device must not be disposed of in unsorted municipal waste. Return it to a collection center for the recycling and disposal of electrical waste and electronic devices.

## CAUTION !!!

It is strictly forbidden to release refrigerant from unnecessary equipment into the air!

**Producer:**

ORAVA retail 1, a.s.  
Seberíniho 2  
821 03 Bratislava  
Slovenská republika

**Importer:**

ORAVA retail 1, a.s.	ORAVA distribution CZ, s.r.o.
Seberíniho 2	Ostravská 494
821 03 Bratislava	739 25 Sviadnov
Slovenská republika	Česká republika

**INSTRUCTIONS AND INFORMATION REGARDING THE DISPOSAL OF USED PACKAGING**

Dispose of used packaging material at a municipal waste disposal site.

**DISPOSAL OF USED ELECTRICAL AND ELECTRONIC EQUIPMENT**

This symbol on the products or in the accompanying documents means that used electrical and electronic products should not be mixed with general household waste. For proper disposal, recovery and recycling, please return these products to designated collection points. Alternatively, in some countries of the European Union or other European countries, you may return your products to your local retailer when purchasing an equivalent new product. By ensuring this product is disposed of correctly, you will help prevent potential negative consequences for the environment natural resources and help prevent potential negative effects on environment and human health, which could be the consequences of improper disposal waste. Contact your local authority or nearest office for more details collection point. Improper disposal of this type of waste may result in penalties in accordance with national regulations.

**For business entities in the countries of the European Union**

If you wish to discard electrical and electronic equipment, please request the necessary information from your seller or supplier.

**Disposal in other countries outside the European Union**

This symbol is valid in the European Union. If you wish to discard this product, please request obtain the necessary information on the correct method of disposal from the local authorities or from the your supplier.



This product complies with all the essential requirements of the EU directives that apply to it.