

Water filter kettle

**orava**

**WF-24A**

**Instruction manual**

**EN**



**CE**

**WF-24A**

## Intended use of the device

The device is designed for water filtration only, to the extent determined by the technical and operational parameters and functions of the equipment, safety and user instructions and the external influences of the operating environment.

ORAVA electrical appliances are manufactured according to the knowledge of the current state of technology and recognized safety and technical rules. Nevertheless, incorrect and unprofessional use or use contrary to the intended purpose may create a risk of injury or endanger the life of the user or a third party, or damage to equipment and other property.

### 1. GENERAL SAFETY INSTRUCTIONS A NOTIFICATIONS



**Read all instructions before using the device!**

1. Always keep the kettle out of the reach of children.
2. The kettle is intended for personal use only and not for commercial professional use.
3. Do not expose the kettle to high temperature, direct sunlight, humidity, mechanical damage from sharp objects or the like.

### 2. Special safety instructions. Read carefully!

- Store the filter kettle at -25 ° C to +40 ° C.
- Do not use the kettle outdoors if the ambient temperature is below 0 °C.
- Before using the filter, leave it in a closed original container in a dry, cool place.
- Use the kettle for the purpose for which it is intended only.
- Before first use, wash all parts of the product thoroughly with warm water and wipe dry.
- When filling with water, make sure that the filter opening is not directly under running water.
- Protect the kettle from falls and impacts.

- At least once a month, wash the unfiltered water tank and the kettle in a mild detergent solution, rinse thoroughly with clean water and wipe dry.
- Do not expose the kettle to direct sunlight and excessive heat from heat sources for a long time.
- When using the kettle regularly, never leave it empty, always keep it filled with water.
- If you do not use the kettle for a long time (more than 3 days), pour out the filtered water and wipe all the parts with a clean cloth. Before using again, repeat the procedure as for the first use.
- The filtering speed may be reduced in winter or when using bubble water. If this happens, remove the filter cartridge and shake it several times.
- Never wash the filter.
- Do not clean the kettle with abrasive cleaners.
- When washing the kettle in the dishwasher, do not place it near a heating element.
- Fill the kettle with drinking water only.
- Store the kettle in a cool place (refrigerator is recommended).
- Do not use hot water in the kettle.
- Filter a maximum of 10 times a day.
- According to the indicator, change the filter regularly after 4 weeks.
- Use the filter only for treated water from the general water supply or from private sources that has been tested and marked as drinking. If it is necessary to boil the water, it is also necessary to boil the filtered water.

### **Note for people with kidney disease or patients with dialysis problems:**

The potassium content may increase slightly during the filtration process. If you have kidney disease or need to follow a potassium-restricted diet, we recommend that you discuss the use of the filter with your doctor.

## **Filter functionality**

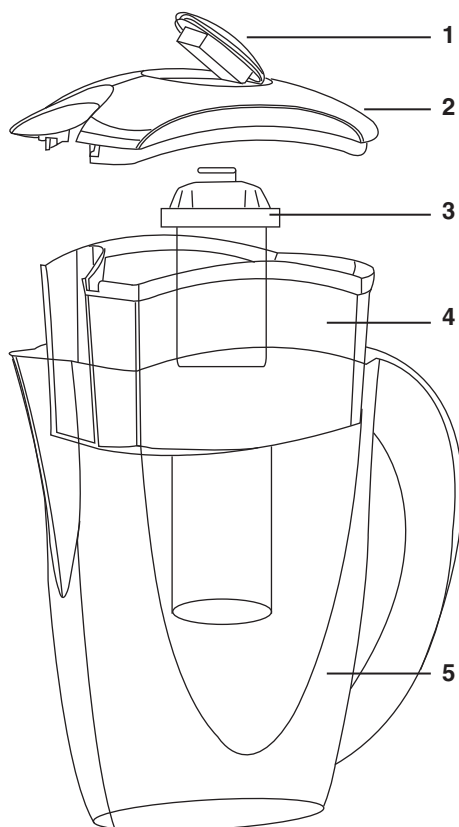
**Phase 1:** capture of solids

**Phase 2:** limescale reduction and heavy metal concentrations

**Phase 3:** removal of undesirable substances and odors disturbing the taste of water (especially chlorine) and some organic impurities

**Phase 4:** capture of solids

## Description of parts



**1 filter change indicator (calendar)**

**2 kettle lid**

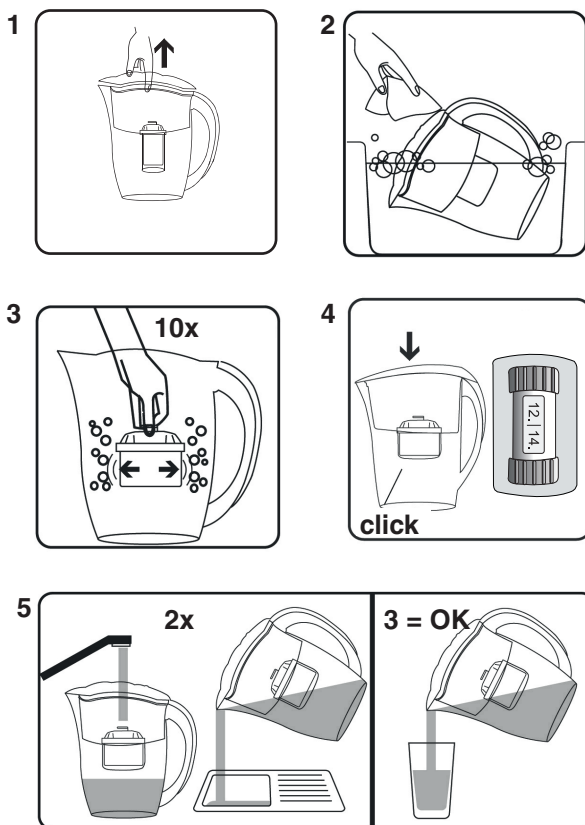
**3 replaceable filter**

**4 tap water tank**

**5 tank for filtered water**

## Using a water filter kettle

1. Unpack the kettle and pick out the filter.
2. Wash the kettle, the lid and the tank.
3. Soak the filter in water and shake it several times to escape all air bubbles. Pour out the used water.
4. Insert the filter into the tank and push lightly, the filter will click.  
For best effect, change the filter once every 4 weeks. Use the left wheel on the indicator (1) to set the month and the right wheel on the day of the next filter change.
5. Fill the tank with tap water up to the edge and let it filter into the filtered water tank. Pour out the filtered water and repeat the same procedure once more. This will get rid of any loose particles of active carbon.



## Care, maintenance and cleaning

- Wash the filter kettle at least once a week with water and a little detergent, then rinse with warm water. Use no abrasive cleaners or brushes or coarse sponges that would leave scratches on the kettle.
- The kettle and the tank can be washed in the dishwasher, but do not place it near the heating source. Clean it regularly.

### WARNING!

The lid of the kettle has a built-in filter change indicator (calendar), so it must not be washed in the dishwasher!

#### **Producer:**

ORAVA retail 1, a.s.  
Seberínho 2  
821 03 Bratislava  
Slovenská republika

#### **Importer:**

ORAVA retail 1, a.s.  
Seberínho 2  
821 03 Bratislava  
Slovenská republika

ORAVA distribution CZ, s.r.o.  
Ostravská 494  
739 25 Sviadnov  
Česká republika



The symbol on the product or on its packaging indicates that this product does not belong to household waste. It is necessary to take it to a collection point. By ensuring proper disposal of this product, you will help prevent negative consequences to the environment and human health that would otherwise be caused by inappropriate disposal of this product. For more detailed information about recycling of this product, please contact your local authority, your household waste disposal service or the shop where you purchased the product.



This product meets all the essential requirements of the EU directives that apply to it.